



CONSUMER PRICE INDEX MONTHLY STATISTICAL BULLETIN



THE STATISTICAL OFFICE

**MINISTRY OF FINANCE, ECONOMIC PLANNING
ETC.**

ST VINCENT AND THE GRENADINES

Tel: 784 457 2921, 456 1111 Ext 3642/3645

Fax: 784 456 2430

**Vol. 14 No.12
December 2024**

TABLE OF CONTENTS

	<u>Page No.</u>
Analysis – December 2024 prices	1
End of Year Review 2023	4
Table No.	
1 Average Retail Price of Selected Items	8
2 Average Retail Price of Selected Items December 2023 compared With December 2022	9
3 The Consumer Price Index by main groups	13
4 The Consumer Price Index contribution to change by Groups	15
5 Monthly Items by Group	16
6 Monthly All Item Index	17
7 Monthly Rate of Inflation	18
8 Accumulated Inflation	19
9 Point-to-Point Inflation Rate	20
10 Average Annual Retail Price	21
11 Retail Prices of Items That Contributed to Change, December 2024 Compared to December 2023	25

Chart No.

1	COICOP Percentage Change for the Month of DECEMBER 2023	14
2	Monthly All Items Index	17
3	Monthly Rate of Inflation	18
4	Accumulated Inflation	19
5	Point-to-Point Inflation Rate	20

* * *

December 2024

The Consumer Price Index decreased by 0.4 percent for the month of December 2024 compared to an increase of 0.4 percent for the month of November 2024. (*see table 3*).

During the month of December 2024, the “All Items” index was registered at 129.1 in comparison to 129.6 for the month of November 2024. Four (4) groups recorded an increase during the period; “Food and Non-Alcoholic Beverages” (1.1%), “Miscellaneous Goods and Services” (0.6%), “Alcoholic Beverages, Tobacco and Narcotics” (0.1%) and “Transport” (0.1%). Four (4) groups recorded a decrease during the month; “Housing, Water, Electricity, Gas and Other Fuels” (2.9%), “Health” (1.5%), “Recreation and Culture” (0.9%) and “Furnishings, Household Equipment and Household Maintenance” (0.1%). Four (4) groups remained unchanged; “Clothing and Footwear”, “Communication”, “Education” and “Hotels and Restaurants”.

The index for the group “Food and Non-Alcoholic Beverages” increased by 1.1 percent due to an increase in the cost for a number of items such as; pumpkin (29.0%), apples (26.6%), pork (21.0%), apple juice (13.9%), dasheen (9.5%), cornflakes (9.1%), teabags (9.0%), local tomatoes (8.7%), eggs (8.3%), whole kernel corn (6.3%), pasta (4.2%), codfish (3.0%) and condensed milk (2.4%).

“Miscellaneous Goods and Services” group index increased by 0.6 percent due to higher prices for men’s deodorant (42.4%) and mouthwash (32.7%).

The 0.1 increase in the group index for “Alcoholic Beverages, Tobacco and Narcotics” is due to an increase in the price of irish cream (2.9%) and cigarettes (1.1%).

Similarly, the index for “Transport” increased by 0.1 percent due to higher cost of passenger airfare from St Vincent and the Grenadines to destination such as: Toronto (19.5%), Barbados (6.5%), Grenada (2.5%) and Miami (1.1%).

The group index for “Housing, Water, Electricity, Gas and Other Fuels” decreased by 2.9 percent on account of a 16.2 percent decline in the price of electricity. This decrease is due to a lower fuel surcharge rate which moved from 61.08 cents per kilowatt hour for the month of November 2024 to 43.12 cents per kilowatt hour for December 2024.

“Health” declined by 1.5 percent due to lower prices for pain killers (33.8%), anti-inflammatory medication (18.9%) and blood sugar test strips (5.7%).

“Recreation and Culture” group index recorded a decrease of 0.9 percent due to a reduction in the prices for a 43” television (31.8%) and dog food (2.6).

The “Furnishings, Household Equipment and Household Maintenance” group index declined by 0.1 percent because of lower prices for powdered detergent (1.2%) and bleach (1.2%).

The point-to-point inflation rate stood at 2.1 percent for the month of December 2024 compared to 4.0 percent for the month of December 2023. The groups that represented the largest increases during the period were, “Hotels and Restaurants” (6.2%), “Education”

(5.6%), “Food and Non-Alcoholic Beverages” (5.2%) and “Furnishings, Household Equipment and Household Maintenance” (4.6%).

The consumer price index decreased for December 2024. The point-to-point inflation rate stood at 2.1 percent due to relative price changes during the month of December 2024 compared with the same period in the previous year.

REVIEW OF 2024

A review of the Consumer Price Index for the year 2024 showed that the annual average “Point-to-Point” inflation rate was 3.6 percent compared to 4.6 percent for the year 2023, (*see table 9*). The accumulated inflation rate at the end of 2024 was recorded at negative 0.4 percent while that for 2023 was recorded at 4.0 percent, (*see table 8*). The average “All Items” index was recorded at 128.7 compared to 124.3 for 2023, (*see table 6*).

Point-to-Point Inflation

During the year the “Point-to-Point” inflation rate recorded positive values. The highest rate of 4.9 percent was recorded in the month of March while the lowest rate of 2.1 percent was recorded in the month of December, (*see table 9*).

Monthly Inflation

The monthly inflation rates fluctuated throughout the year. The highest rate was registered at 0.9 percent which was recorded for the month of April, while the lowest rate was registered at negative 0.5 percent for the month of October, (*see table 7*).

All Items Index

The “All Items” index moved from 127.2 in January to 129.1 in December. The highest level of 129.9 for the year was recorded in the month of September, while the lowest of 127.2 was recorded in the months of January and February (*see table 6*).

Point-to-Point Indices

Nine (9) groups recorded increases for the year; “Hotels and Restaurants” (6.2%), “Education” (5.6%), “Food and Non-Alcoholic Beverages” (5.2%), “Furnishings, Household Equipment and Household Maintenance” (4.6%), “Clothing and Footwear” (2.8%), “Miscellaneous Goods and Services” (2.4%), “Recreation and Culture” (2.3%), “Alcoholic Beverages, Tobacco and Narcotics” (2.1%) and “Transport” (2.0%). Three (3) groups

recorded decrease; “Housing, Water, Electricity, Gas and Other Fuels” (2.4%), “Communication” (0.3%) and “Health” (0.2%).

Hotels and Restaurants

Higher prices for school meals in particular; roti (66.7%), bread and chicken (33.3%) and pizza (25.0%) along with a chicken sandwich (20.0%) and chicken and fries (16.4%) were the main contributors to the increase of 6.2 percent in the group index for “Restaurants and Hotels” (*see table 11*).

Education

“Education” grew by 5.6 percent due to an increase in the fee for after school classes – secondary school (75.0%) and primary school (50.0%), tuition fees for foreign tertiary institutions (11.4) and school fees for pre-primary school (5.6%), (*see table 11*).

Food and Non-Alcoholic Beverages

The group index for “Food and Non-Alcoholic Beverages” recorded an increase of 5.2 percent due to higher prices for several food items namely; imported tomatoes (90.1%), kidney beans (44.6%), imported broccoli (42.2%), cornflakes (37.4%), cornmeal (30.6%), sardine (29.6%), green peas (29.4%), corned beef (28.9%), cream of wheat (27.2%), local pumpkin (23.7%), spaghetti (23.5%), ripe plantains (23.3%), fresh pork (20.0%), condensed milk (16.1%), ketchup (11.6%) and loose rice (4.5%), (*see table 11*).

Furnishings, Household Equipment and Household Maintenance

The group index for “Furnishings, Household Equipment and Household Maintenance grew by 4.6 percent on account of an increase in the wages to domestic workers which included maids (75.4%), babysitters (57.4%) and gardeners (25.0%) and dishwashing liquid (35.3%), (*see table 11*).

Clothing and Footwear

The group index for “Clothing and Footwear” grew by 2.8 percent as a result of an increase in the price of belts (56.3%), long jeans (21.7%), long school pants – khaki (21.5%), female blouse (20.4%) and t-shirt (20.1%), (*see table 11*).

Miscellaneous Goods and Services

“Miscellaneous Goods and Services” increased by 2.4 percent due mainly to an increase in the prices of comprehensive car insurance (50.0%), mouthwash (43.7%), toothpaste (23.7%), day care services (22.3%) and third-party car insurance (10.0%), (*see table 11*).

Recreation and Culture

“Recreation and Culture” increased by 2.3 percent on account of higher prices for carnival costumes (20.0%), 65” television (17.8%), language arts textbook (13.9%) and a laptop (12.3%), (*see table 11*).

Alcoholic Beverages, Tobacco and Narcotics

The 2.1 percent growth in the group index for “Alcoholic Beverages, Tobacco and Narcotics” was as a result of an increase in the price of tequila (33.2%), cigarettes (16.5%), local wine (14.3%) and brandy (9.6%), (*see table 11*).

Transport

The “Transport” index increased by 2.0 percent on account of higher prices for engine coolant (44.4%), passenger airfare from St. Vincent and the Grenadines to Toronto (38.2%), Miami (34.0%), Barbados (27.6%), tyres (31.0%), spark plugs (25.1%), driver’s license (25.0%) and vehicle license and inspection (13.4%), (*see table 11*).

Housing, Water, Electricity, Gas and Other Fuels

“Housing, Water, Electricity, Gas and Other Fuels” declined by 2.4 percent due mainly to lower prices for queen mattress (53.6%), queen sheet set (26.9%) and electricity (14.2%), (*see table 11*).

Communication

The 0.3 percent decrease in the “Communication” index is due mainly to a 15.8 percent decline the price of cell phones, (*see table 11*).

Health

The “Health” index declined by 0.2% as a result of a decrease in the price for spectacles (13.0%), antihistamine (10.6%) and pain relievers (9.5%), (*see table 11*).

Table 1
Average Retail Price of Selected Items

Items	Unit of Quantity	Average Price EC\$		Change in Price	Percentage Change in Price	
		December 2024	November 2024			
INCREASED						
Cornflakes	680g Box	14.65	13.43	1.22	9.1	
Pasta	454g Pk	7.65	7.34	0.31	4.2	
Pork	Lb	12.00	9.92	2.08	21.0	
Codfish	Lb	15.67	15.22	0.45	3.0	
Condensed milk	397g Tin	6.06	5.92	0.14	2.4	
Eggs	Dozen	13.88	12.82	1.06	8.3	
Apples	Lb	6.85	5.41	1.44	26.6	
Tomatoes - local	Lb	11.41	10.50	0.91	8.7	
Pumpkin	Lb	4.85	3.76	1.09	29.0	
Dasheen	Lb	3.57	3.26	0.31	9.5	
Whole kernel corn	432g Tin	8.25	7.76	0.49	6.3	
Teabags	25 Pkt	10.05	9.22	0.83	9.0	
Apple juice	1L Box	11.87	10.42	1.45	13.9	
Irish Cream	750ml Bottle	109.17	106.09	3.08	2.9	
Cigarette	20 Pkt	4.52	4.47	0.05	1.1	
Passenger Airfare from SVG to:						
	<i>Miami</i>	Month	2770.99	2740.47	30.52	1.1
	<i>Toronto</i>	Month	3014.85	2522.20	492.65	19.5
	<i>Barbados</i>	One way	570.35	535.66	34.69	6.5
	<i>Grenada</i>	One way	319.62	311.78	7.84	2.5
Mouthwash	500ml Bottle	9.90	7.46	2.44	32.7	
Men's deodorant	85g Bottle	22.75	15.98	6.77	42.4	
DECREASED						
Cornmeal	340g Pk	4.95	5.20	-0.25	-4.8	
Chicken thighs	Lb	3.68	4.43	-0.75	-16.9	
Luncheon meat	340g Tin	9.05	9.55	-0.50	-5.2	
Cucumber	Lb	4.53	4.86	-0.33	-6.8	
Pineapple - imported	Lb	7.15	7.32	-0.17	-2.3	
Electricity Consumption Charge	150KWH	139.68	166.62	-26.94	-16.2	
Powdered detergent	1Kg Pk	11.90	12.04	-0.14	-1.2	
Bleach	950ml Bottle	5.62	5.69	-0.07	-1.2	
Anti-inflammatory	20 Tablets	5.66	6.98	-1.32	-18.9	
Pain killers	100 Tablets	10.00	15.10	-5.10	-33.8	
Blood sugar strips	50 Strips	120.00	127.32	-7.32	-5.7	
Television - 43 inch	Each	2299.00	3369.73	-1070.73	-31.8	
Dog food	625g Tin	15.87	16.29	-0.42	-2.6	

Table 2.1
Average Retail Price of Selected Items
December 2024 Compared With December 2023

Items	Unit of Quantity	Average EC\$		Change in Price	Percentage Change in Price
		December 2024	December 2023		
FOOD AND NON-ALCOHOLIC BEVERAGES					
Rice - Loose	1lb	2.33	2.23	0.10	4.48
Rice - Packaged	2kg	9.74	9.78	-0.04	-0.41
Flour - Loose	1 lb	1.91	1.92	-0.01	-0.52
Flour - Packaged (white)	2kg	9.24	9.17	0.07	0.76
Flour - Packaged (wholewheat)	2kg	9.62	9.62	0.00	0.00
Cornflakes	510g Box	16.60	15.78	0.82	5.20
Bread - Large Sandwich Loaf (white)	Each	5.42	5.42	0.00	0.00
Bread- Small Loaf, white	5 pk	2.91	2.91	0.00	0.00
Bread - Large Sandwich Loaf (whole wheat)	Each	6.26	6.26	0.00	0.00
Crix - salted crackers, White	288g (3 pk)	6.57	6.57	0.00	0.00
Pasta - Elbows	340 g	5.92	5.53	0.39	7.05
Beef - Fresh	1 lb	13.00	12.00	1.00	8.33
Pigtail - salted	1 lb	10.71	10.44	0.27	2.59
Chicken - Leg Quarters	1 lb	3.95	3.83	0.12	3.23
Chicken - Backs	1 lb	2.65	2.66	-0.01	-0.38
Chicken - Wings	1 lb	6.89	6.01	0.88	14.64
Turkey Wings	1 lb	5.23	4.83	0.40	8.28
Luncheon Meat (pork)	340 g	9.61	9.55	0.06	0.63
Corned beef	340g	9.56	9.30	0.26	2.80
Fish - Fresh (Deep Sea)	1 lb	12.00	12.00	0.00	0.00
Fish - Fresh (Jacks)	1 lb	6.67	5.00	1.67	33.40
Fish - Fresh (Robin)	1 lb	6.67	5.00	1.67	33.40
Codfish	1 lb	15.67	14.67	1.00	6.82
Sardine in soya oil	106g Tin	5.96	5.53	0.43	7.78
Milk - Evaporated	410g Tin	4.17	4.16	0.01	0.24
Powdered milk - full cream	1 lb	8.28	8.35	-0.07	-0.84
Eggs	1 Doz	13.88	14.73	-0.85	-5.77
Margarine	445g Tub	13.55	13.60	-0.05	-0.37
Soya bean oil	1Litre	15.49	15.85	-0.36	-2.27
Coconut oil	750ml Bottle	39.95	36.92	3.03	8.21
Bananas (ripe)	1 lb	2.05	1.77	0.28	15.82
Limes	1 lb	4.81	5.10	-0.29	-5.69
Tomatoes	1 lb	11.41	10.08	1.33	13.19
Sweet Potatoes	1 lb	4.42	3.59	0.83	23.12
Yams	1 lb	5.04	4.66	0.38	8.15
Sugar - Brown (loose)	1 lb	2.34	2.29	0.05	2.18
Sugar - White (loose)	1 lb	2.64	2.62	0.02	0.76
Ice cream	1 Litre Tub	19.06	18.06	1.00	5.54
Tomato Ketchup	750ml Bottle	10.16	9.10	1.06	11.65
Orange Juice	1 Litre box	9.79	9.71	0.08	0.82
Vitamalt	310 ml Bottle	5.90	5.95	-0.05	-0.84

Table 2.2
Average Retail Price of Selected Items
December 2024 Compared With December 2023

Items	Unit of Quantity	Average EC\$		Change in Price	Percentage Change in Price
		December 2024	December 2023		
ALCOHOLIC BEVERAGES, TOBACCO & NARCOTICS					
Rum - Local (White)	750 ml Bot.	46.38	45.24	1.14	2.52
Beer - Local	280 ml Bot.	5.00	5.00	0.00	0.00
Cigarettes	Pkt. (10)	4.52	3.88	0.64	16.49
Table wine (local)	26 oz Bot.	34.93	30.55	4.38	14.34
Vodka	750ml Bot.	53.52	53.23	0.29	0.54
CLOTHING & FOOTWEAR					
Textile material - Cotton	1Yd.	16.07	16.07	0.00	0.00
Textile material - Tetrex	1Yd.	13.44	12.95	0.49	3.78
Men's Shirts - Long Sleeve	Each	79.48	75.98	3.50	4.61
Men's Jeans (long)	Pair	76.26	68.98	7.28	10.55
Men's Shoes -Formal	Pair	141.00	127.62	13.38	10.48
Women's Shoes - Formal	Pair	79.00	73.19	5.81	7.94
Women's Blouse	Each	44.95	37.34	7.61	20.38
School shirt - white, size 10	Each	17.45	16.45	1.00	6.08
School overal , navy blue, size 8	Each	49.95	49.95	0.00	0.00
HOUSING, WATER, ELECTRICITY					
GAS AND OTHER FUELS					
Rent :					
Unfurnished House - 2 Bedrooms	Month	785.00	785.00	0.00	0.00
Unfurnished House - 3 Bedrooms	Month	750.00	750.00	0.00	0.00
Furnished Apartment - 2 Bedrooms	Month	812.50	812.50	0.00	0.00
Water - Consumption Charge	5000 Gallons	35.00	35.00	0.00	0.00
Electricity Consumption Charge	300 KWH	283.35	329.65	-46.30	-14.05
Cooking Gas	20 Lb. Cyl.	39.70	37.95	1.75	4.61
FURNISHING, HOUSEHOLD EQUIPMENT AND HOUSEHOLD MAINTENANCE					
Bed - queen size	Each	2436.83	2882.52	-445.69	-15.46
Sheets - queen size, 300 thread count, 100% cotton	Each	194.95	194.95	0.00	0.00
Dinner forks	Each	6.93	7.43	-0.50	-6.73
Powder detergent	500g Pk	5.21	5.19	0.02	0.39
Toilet tissue, 280 sheets per roll	1 Roll	1.56	1.55	0.01	0.65

Table 2.3
Average Retail Price of Selected Items
December 2024 Compared With December 2023

Items	Unit of Quantity	Average EC\$		Change in Price	Percentage Change in Price
		December 2024	December 2023		
HEALTH					
Doctor's Fee - Gynaecologist	Visit	80.00	80.00	0.00	0.00
Doctor's Fee - General Practitioner	Visit	60.00	60.00	0.00	0.00
Blood test - CBC	Test	27.39	27.39	0.00	0.00
Drugs for Hypertension	Month supply	6.69	6.69	0.00	0.00
Drug for Diabetes	Month supply	4.84	4.75	0.09	1.89
Dental Care	Visit	149.47	149.47	0.00	0.00
TRANSPORT					
Petrol - Unleaded	Gallon	14.61	16.06	-1.45	-9.03
Vehicle License (car) - not exd. 3000 lbs	Year	765.00	680.00	85.00	12.50
Bus Fare - Mesopotamia	1-Way	3.50	3.50	0.00	0.00
Boat Fare - Bequia	1-Way	25.00	25.00	0.00	0.00
Parking fees	1 Hour	2.50	2.50	0.00	0.00
Airfare - SVG to Barbados	1-Way	570.35	477.09	93.26	19.55
COMMUNICATION					
Fixed Line Domestic Rate - peak	1 Minute	0.08	0.08	0.00	0.00
Telephone - Consumption Charge	226 Units	18.08	18.08	0.00	0.00
Mobile to Mobile - domestic (off network)	1 Minute	1.02	1.02	0.00	0.00
Internet	1 month	125.00	123.00	2.00	1.63
Cable TV charges (basic)	1 month	69.00	69.00	0.00	0.00
RECREATION AND CULTURE					
Television 43 " (smart TV)	Each	1,396.38	1,349.86	46.52	3.45
Tablet - 10.1"	Each	355.43	341.52	13.91	4.07
Laptop Computer - 8 GB	Each	1,677.27	1,779.04	-101.77	-5.72
Dog Food (Canned)	375 g Tin	14.00	14.00	0.00	0.00
Carnival costume and Band Fees (Adult)	Each	600.00	500.00	100.00	20.00
Mathematics textbook	Each	94.93	88.17	6.76	7.67
Newspapers	Each	1.50	1.50	0.00	0.00

Table 2.4
Average Retail Price of Selected Items
December 2024 Compared With December 2023

Items	Unit of Quantity	Average EC\$		Change in Price	Percentage Change in Price
		December 2024	December 2023		
EDUCATION					
Pre-Primary - Private	Month	330.00	312.50	17.50	5.60
Primary School Fee - Private	Term	1400.00	1400.00	0.00	0.00
Secondary School Fee - Private	Term	150.00	150.00	0.00	0.00
Tertiary Education Tuition - undergraduate, social sciences	Annual	8412.03	8277.48	134.55	1.63
Private tutor	Per Session	32.50	20.00	12.50	62.50
HOTELS AND RESTAURANTS					
Pizza, pepperoni	Each	21.75	21.75	0.00	0.00
Chicken Lunch - regular	Each	15.00	15.00	0.00	0.00
Fish Lunch - regular	Each	20.00	20.00	0.00	0.00
Fast Food - 2 Pc Chicken and Fries	Each	26.75	21.85	4.90	22.43
Roti - Beef	Each	13.96	13.96	0.00	0.00
School meals - Bread and Chicken	Each	4.33	4.00	0.33	8.25
MISCELLANEOUS GOODS AND SERVICES					
Women's Hairdressing (Relaxer)	Visit	72.46	72.46	0.00	0.00
Men's Haircut, Regular	Visit	15.00	15.00	0.00	0.00
Disposable diapers, Medium, 22pcs	1 pack	22.31	23.70	-1.39	-5.86
Toothpaste	170g Tube	15.10	14.87	0.23	1.55
Roll -on	75ml bottle	6.93	8.34	-1.41	-16.91
Sanitary napkins, regular, with wings	10 per pack	8.34	8.73	-0.39	-4.47
Toilet Soap	110g	4.89	5.20	-0.31	-5.96
Elderly care Services	Month	1800.00	1800.00	0.00	0.00
Day care services (children < 2 years)	Month	360.00	275.00	85.00	30.91
Health Insurance - Group (family) ≥3 Persons	Month	307.00	307.00	0.00	0.00
Motor Vehicle Insurance - 3rd party	Annual	471.49	459.28	12.21	2.66

Table 3
The Consumer Price Index by Main Groups
January 2010 = 100

	Groups	Weight	November 2024	December 2024	December 2023	Percentage Change Over Previous:	
						Month November	Year December
01.	Food and Non-Alcoholic Beverages	21.91	161.7	163.4	155.3	1.1	5.2
02.	Alcoholic Beverages, Tobacco & Narcotics	3.87	138.2	138.4	135.5	0.1	2.1
03.	Clothing and Footwear	3.22	114.8	114.8	111.7	0.0	2.8
04.	Housing, Water, Electricity, Gas and other Fuels	30.06	108.5	105.3	107.9	-2.9	-2.4
05.	Furnishings, Household Equipment and Household Maintenance	6.59	139.9	139.8	133.6	-0.1	4.6
06.	Health	1.79	125.0	123.1	123.3	-1.5	-0.2
07.	Transport	11.84	142.0	142.2	139.4	0.1	2.0
08.	Communication	9.41	114.1	114.1	114.5	0.0	-0.3
09.	Recreation and Culture	3.81	120.4	119.3	116.6	-0.9	2.3
10.	Education	1.32	120.9	120.9	114.5	0.0	5.6
11.	Hotels and Restaurants	1.87	146.5	146.5	137.9	0.0	6.2
12.	Miscellaneous Goods and Services	4.31	119.9	120.6	117.8	0.6	2.4
	ALL ITEMS	100.00	129.6	129.1	126.5	-0.4	2.1

Chart 1. COICOP Groups Percentage Change for December 2024

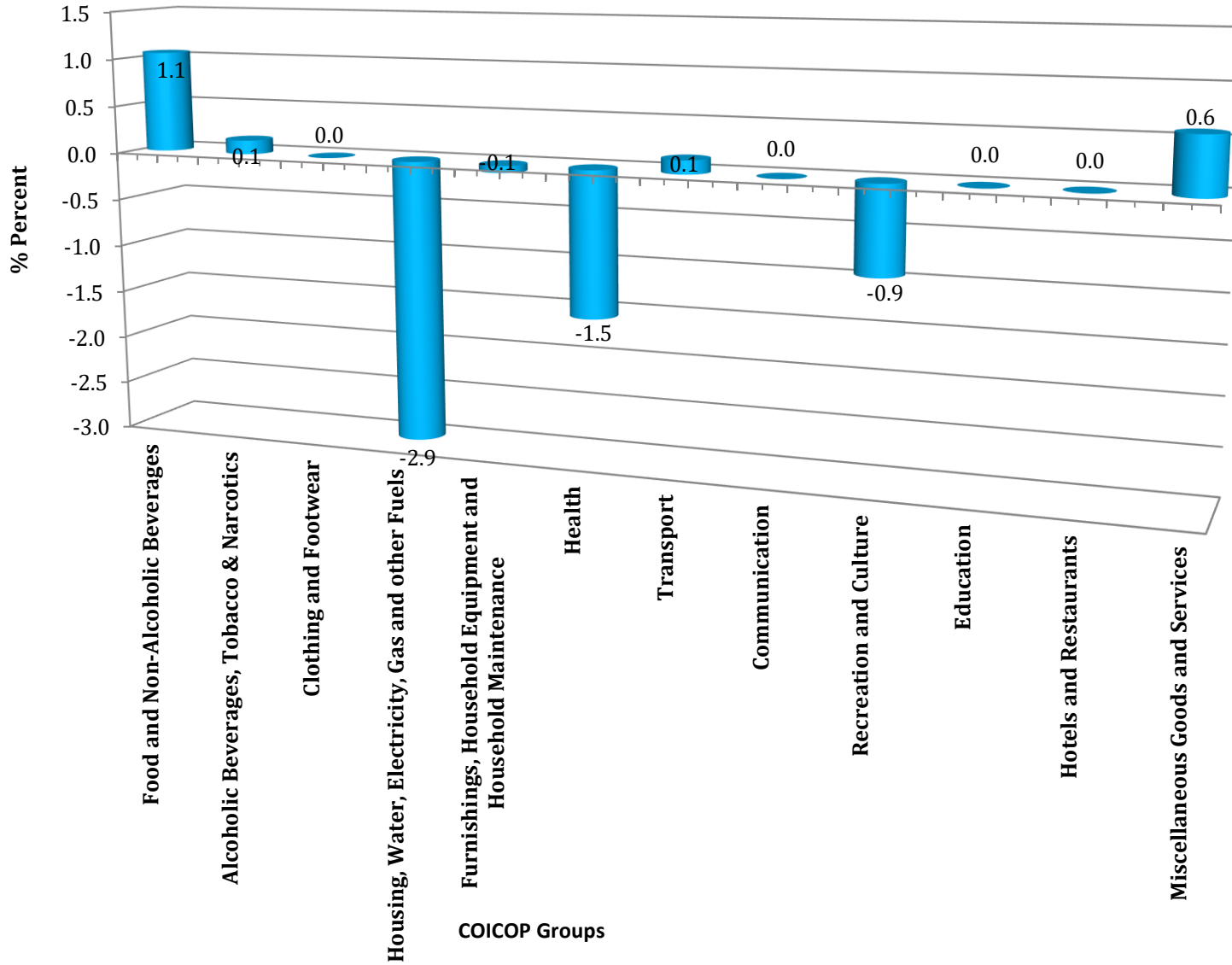


Table 4
The Consumer Price Index by Main Groups
January 2010 = 100
Contribution to Change

	Groups	Weight	November 2024	December 2024	Percentage Change	Cost Weight		Change in Cost Weight	% Contribution to Change
						November 2024	December 2024		
1.	Food and Non-Alcoholic Beverages	21.91	161.7	163.4	1.1	3,542.85	3,580.09	37.2	-74.5
2.	Alcoholic Beverages, Tobacco & Narcotics	3.87	138.2	138.4	0.1	534.83	535.61	0.8	-1.5
3.	Clothing and Footwear	3.22	114.8	114.8	0.0	369.66	369.66	0.0	0.0
4.	Housing, Water, Electricity, Gas and other Fuels	30.06	108.5	105.3	-2.9	3,261.51	3,165.32	-96.2	192.4
5.	Furnishings, Household Equipment and Household Maintenance	6.59	139.9	139.8	-0.1	921.94	921.28	-0.7	1.3
6.	Health	1.79	125.0	123.1	-1.5	223.75	220.35	-3.4	6.8
7.	Transport	11.84	142.0	142.2	0.1	1,681.28	1,683.65	2.4	-4.7
8.	Communication	9.41	114.1	114.1	0.0	1,073.68	1,073.68	0.0	0.0
9.	Recreation and Culture	3.81	120.4	119.3	-0.9	458.72	454.53	-4.2	8.4
10.	Education	1.32	120.9	120.9	0.0	159.59	159.59	0.0	0.0
11.	Hotels and Restaurants	1.87	146.5	146.5	0.0	273.96	273.96	0.0	0.0
12.	Miscellaneous Goods and Services	4.31	119.9	120.6	0.6	516.77	519.79	3.0	-6.0
	ALL ITEMS	100.00	129.6	129.1	-0.4	12,960.00	12,910.00	-50.0	100.0

TABLE 5
Monthly Index - 2023
January 2010 = 100

Groups	All Items	Food & Non-Alcoholic Beverages	Alcoholic Beverages Tobacco & Narcotics	Clothing & Footwear	Housing Water Electricity Gas and Fuels	Furnishings Household Equipment & Household Maintenance	Health	Transport	Communi-cation	Recreation & Culture	Education	Hotels & Restaurants	Miscell-aneous Goods and Services
WEIGHT	100.00	21.91	3.87	3.22	30.06	6.59	1.79	11.84	9.41	3.81	1.32	1.87	4.31
MONTH													
January	127.2	155.7	136.7	113.8	107.8	131.7	124.9	143.5	114.5	118.7	114.5	136.5	118.5
February	127.2	156.8	137.1	114.8	107.0	131.5	125.0	142.0	114.4	120.3	114.5	138.4	118.6
March	127.8	157.5	136.9	115.0	108.1	140.1	123.3	140.2	114.4	118.6	114.5	138.4	118.4
April	128.9	158.8	137.5	114.0	109.1	139.9	123.6	143.5	114.8	121.0	114.5	139.8	118.7
May	129.1	158.2	137.7	114.4	108.7	140.1	123.2	146.8	114.8	119.9	114.5	144.3	118.1
June	129.0	157.6	137.8	114.3	108.9	140.3	123.2	147.1	114.8	118.0	114.5	144.3	117.7
July	129.4	158.2	138.4	112.6	108.9	139.6	124.8	148.9	114.8	119.2	114.5	144.3	118.1
August	128.6	158.2	138.0	112.7	105.6	139.5	126.3	149.5	114.8	120.0	114.5	144.6	118.0
September	129.9	160.8	138.2	113.3	108.3	139.6	126.3	146.2	114.8	120.2	120.9	146.5	120.2
October	129.1	160.3	138.2	114.8	106.9	139.7	125.0	143.9	114.7	119.8	120.9	146.5	120.0
November	129.6	161.7	138.2	114.8	108.5	139.9	125.0	142.0	114.1	120.4	120.9	146.5	119.9
December	129.1	163.4	138.4	114.8	105.3	139.8	123.1	142.2	114.1	119.3	120.9	146.5	120.6

Table 6: Monthly All Items Index, January to December 2019 - 2024

Months	2019	2020	2021	2022	2023	2024
January	111.4	111.7	110.5	114.7	121.4	127.2
February	110.9	111.8	110.8	114.8	121.5	127.2
March	111.0	111.5	111.4	115.4	121.8	127.8
April	111.5	111.6	112.0	116.9	123.0	128.9
May	111.0	110.5	111.9	118.0	123.6	129.1
June	111.6	110.7	112.8	118.7	125.0	129.0
July	111.8	110.0	112.9	119.8	125.4	129.4
August	111.8	110.3	113.1	120.6	125.2	128.6
September	111.5	110.2	113.2	121.5	125.2	129.9
October	111.5	110.3	113.4	121.9	126.2	129.1
November	111.9	110.3	113.8	122.3	126.5	129.6
December	111.3	110.2	114.0	121.6	126.5	129.1
Average	111.4	110.8	112.5	118.9	124.3	128.7

Chart 2: Monthly All Items Index, January to December 2023 - 2024

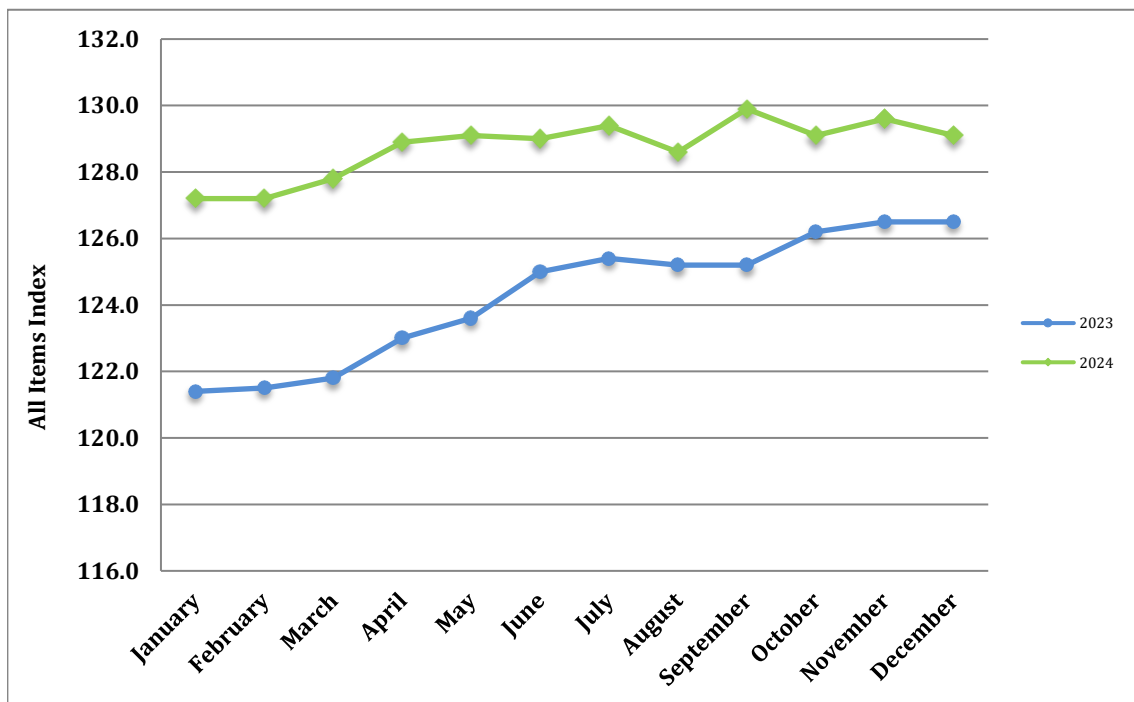


Table 7: Monthly Rate of Inflation, January to December 2019 - 2024

Months	2019	2020	2021	2022	2023	2024
January	0.5	0.4	0.3	0.6	-0.2	0.6
February	0.1	0.4	0.3	0.1	0.1	0.0
March	0.2	0.2	0.5	0.5	0.2	0.5
April	0.6	0.3	0.5	1.3	1.0	0.9
May	0.2	-0.7	-0.1	0.9	0.5	0.2
June	0.7	-0.5	0.8	0.6	1.1	-0.1
July	0.9	-1.2	0.1	0.9	0.3	0.3
August	0.9	-0.9	0.2	0.7	-0.2	-0.6
September	0.6	-1.0	0.1	0.7	0.0	1.0
October	0.6	-0.9	0.2	0.3	0.8	-0.6
November	1.0	-0.9	0.4	0.3	0.2	0.4
December	0.5	-1.0	0.2	-0.6	0.0	-0.4

Chart 3: Monthly Rate of Inflation, January to December 2023 - 2024

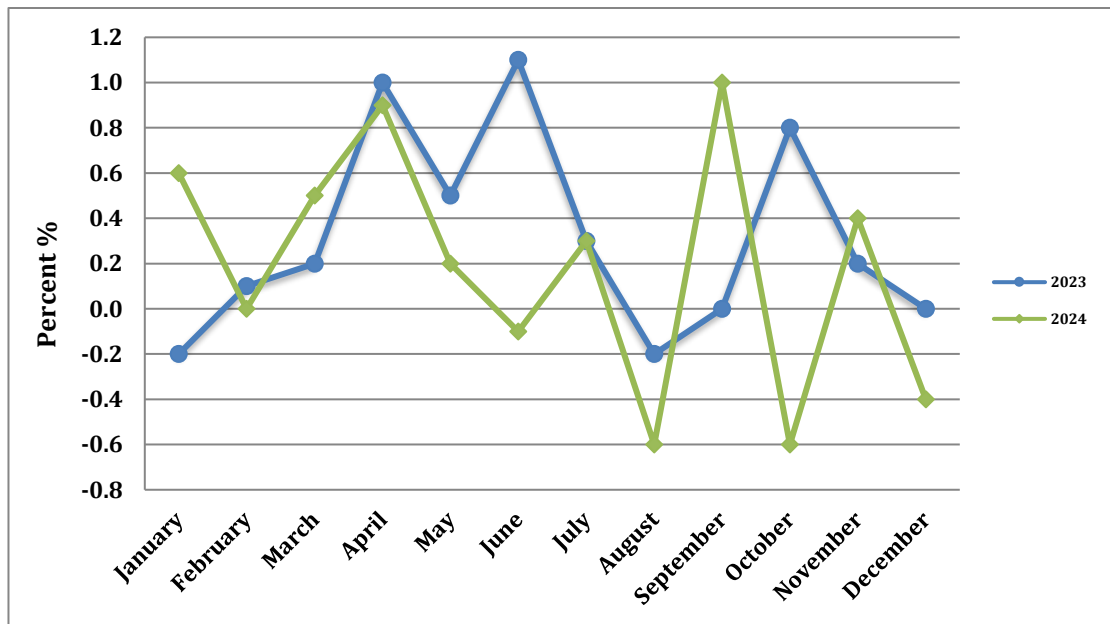


Table 8: Accumulated Inflation, January to December 2019 - 2024

Months	2019	2020	2021	2022	2023	2024
January	0.5	0.4	0.3	0.6	-0.2	0.6
February	-0.4	0.1	0.5	0.7	-0.1	0.6
March	0.1	-0.3	1.1	1.2	0.2	1.0
April	0.5	0.1	1.6	2.5	1.2	1.9
May	-0.4	-0.1	1.5	3.5	1.6	2.0
June	0.5	0.3	2.3	4.1	2.8	2.0
July	0.2	-0.6	2.4	5.0	3.1	2.3
August	0.0	0.3	2.6	5.7	2.9	1.7
September	-0.3	-0.1	2.7	6.4	2.9	2.7
October	0.0	0.1	2.9	6.7	3.7	2.1
November	0.4	0.0	3.2	7.1	4.0	2.4
December	-0.5	-0.1	3.4	6.5	4.0	2.1

Chart 4: Accumulated Inflation, January to December 2023 - 2024

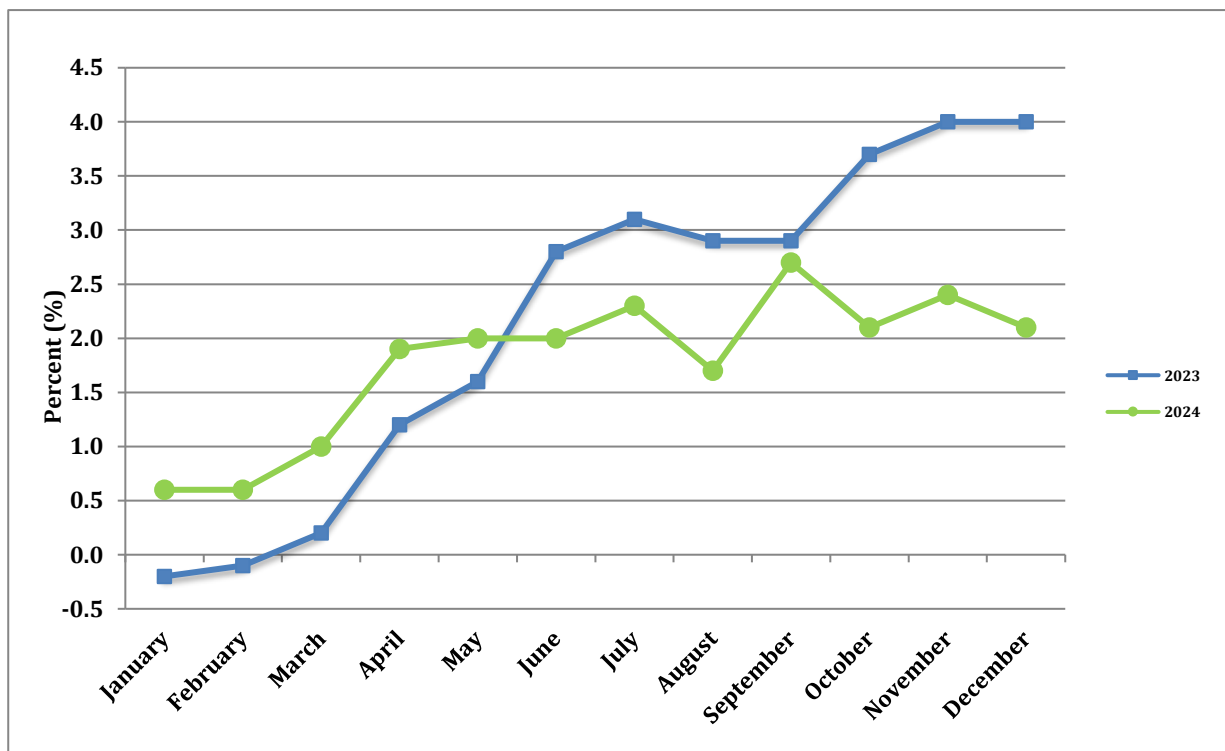
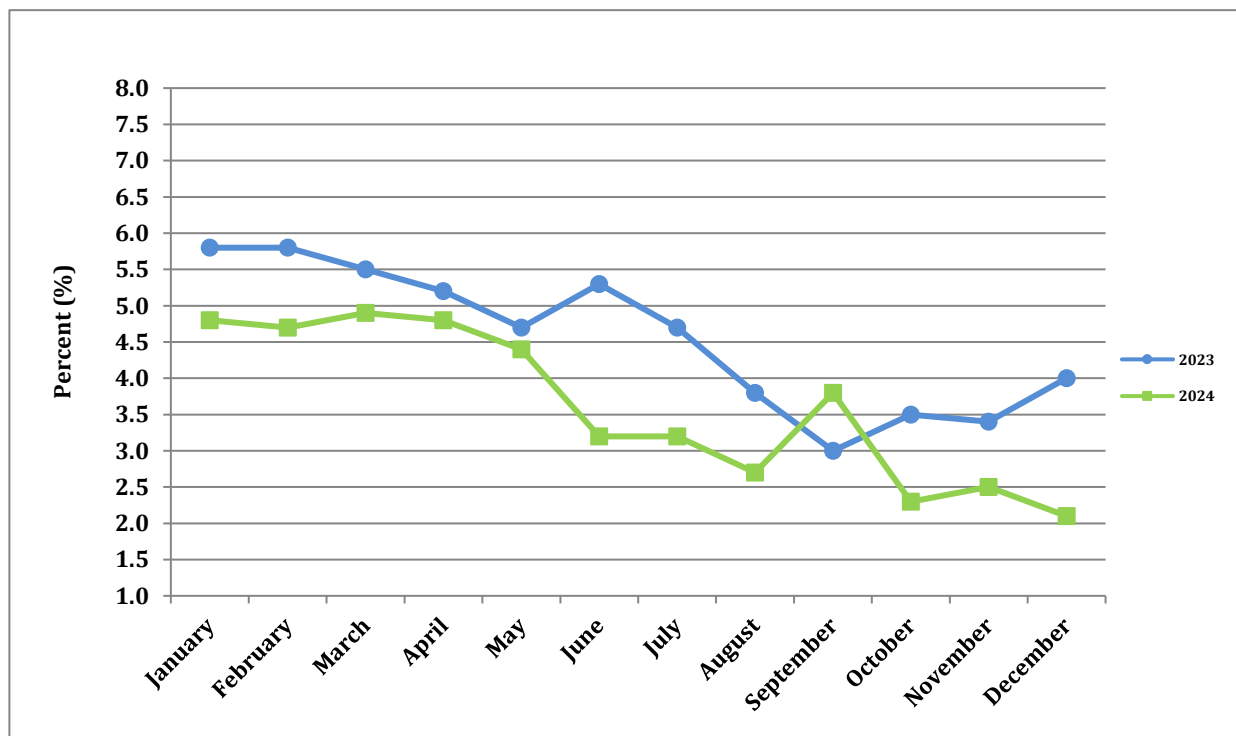


Table 9: Point to Point Rate of Inflation, January to December 2019 - 2024

Months	2019	2020	2021	2022	2023	2024
January	1.6	0.3	-1.1	3.8	5.8	4.8
February	1.4	0.8	-0.9	3.6	5.8	4.7
March	1.3	0.5	-0.1	3.6	5.5	4.9
April	1.0	0.1	0.4	4.4	5.2	4.8
May	0.5	-0.5	1.3	5.5	4.7	4.4
June	0.9	-0.8	1.9	5.2	5.3	3.2
July	1.0	-1.6	2.6	6.1	4.7	3.2
August	0.9	-1.3	2.5	6.6	3.8	2.7
September	0.5	-1.2	2.7	7.3	3.0	3.8
October	0.5	-1.1	2.8	7.5	3.5	2.3
November	0.9	-1.4	3.2	7.5	3.4	2.5
December	0.5	-1.0	3.4	6.7	4.0	2.1
Average	0.9	-0.6	1.6	5.7	4.6	3.6

Chart 5: Point to Point Rate of Inflation, January to December 2023 - 2024



**Table 10.1: Average Annual Retail Price
Selected Items 2024 Compared With 2023**

Items	Unit Of Quantity	Average Retail Price EC\$		Percentage Change Over Previous Year
		2024	2023	2023
FOOD AND NON-ALCOHOLIC BEVERAGES				
Rice - Loose	1lb	2.30	2.09	10.0
Rice - Packaged	2kg	9.74	9.79	-0.5
Flour - Loose	1 lb	1.93	1.92	0.5
Flour - Packaged (white)	2kg	9.23	9.15	0.9
Flour - Packaged (wholewheat)	2kg	9.62	9.64	-0.2
Cornflakes	510g Box	16.16	15.44	4.7
Bread - Large Sandwich Loaf (white)	Each	5.42	5.32	1.9
Bread- Small Loaf, white	5 pk	2.91	2.91	0.0
Bread - Large Sandwich Loaf (whole wheat)	Each	6.26	6.21	0.8
Crix - salted crackers, White	288g (3 pk)	6.57	5.54	18.6
Pasta - Elbows	340 g	5.73	5.39	6.3
Beef - Fresh	1 lb	12.10	10.17	19.0
Pigtail - salted	1 lb	10.51	11.92	-11.8
Chicken - Leg Quarters	1 lb	3.88	3.72	4.3
Chicken - Backs	1 lb	2.68	2.67	0.4
Chicken - Wings	1 lb	6.62	5.89	12.4
Turkey Wings	1 lb	4.99	5.02	-0.6
Luncheon Meat (pork)	340 g	9.63	9.20	4.7
Corned beef	340g	9.50	9.90	-4.0
Fish - Fresh (Deep Sea)	1 lb	12.00	12.16	-1.3
Fish - Fresh (Jacks)	1 lb	6.54	4.88	34.0
Fish - Fresh (Robin)	1 lb	6.47	4.96	30.4
Codfish	1 lb	14.79	15.22	-2.8
Sardine in soya oil	106g Tin	5.74	5.29	8.5
Milk - Evaporated	410g Tin	4.12	4.09	0.7
Powdered milk - full cream	1 lb	8.20	8.48	-3.3
Eggs	1 Doz	13.16	12.49	5.4
Margarine	445g Tub	13.54	13.30	1.8
Soya bean oil	1Litre	15.69	17.09	-8.2
Coconut oil	750ml Bottle	38.21	36.26	5.4
Bananas (ripe)	1 lb	1.90	1.63	16.6
Limes	1 lb	4.94	4.72	4.7
Tomatoes	1 lb	9.14	7.68	19.0
Sweet Potatoes	1 lb	4.41	3.51	25.6
Yams	1 lb	4.73	4.10	15.4
Sugar - Brown (loose)	1 lb	2.30	2.30	0.0
Sugar - White (loose)	1 lb	2.64	2.63	0.4
Ice cream	1 Litre Tub	18.40	18.06	1.9
Tomato Ketchup	750ml Bottle	9.80	9.39	4.4
Orange Juice	1 Litre Box	9.46	9.15	3.4
Vitamalt	310 ml Bottle	5.94	5.95	-0.2
Cornmeal	340g Pk	4.59	3.62	26.8
Pork chops	1 lb	13.06	10.91	19.7
Stweet pepper	1 lb	12.48	8.97	39.1
Condensed milk	397g Tin	6.14	5.57	10.2
Curry	1 lb	16.98	13.92	22.0

**Table 10.2: Average Annual Retail Price
Selected Items 2024 Compared With 2023**

Items	Unit Of Quantity	Average Retail Price EC\$		Percentage Change Over Previous Year 2023
		2024	2023	
ALCOHOLIC BEVERAGES, TOBACCO & NARCOTICS				
Rum - Local (White)	750 ml Bot.	46.35	44.55	4.0
Beer - Local	280 ml Bot.	5.00	4.94	1.2
Cigarettes	Pkt. (10)	4.38	3.80	15.3
Table wine (local)	26 oz Bot.	34.43	29.48	16.8
Vodka	750 ml Bot.	53.43	51.91	2.9
Tequila	1 L Bot.	78.50	60.02	30.8
White wine	750 ml Bot.	51.58	43.09	19.7
CLOTHING & FOOTWEAR				
Textile material - Cotton	1Yd.	16.07	14.59	10.1
Textile material - Tetrex	1Yd.	13.11	12.11	8.3
Men's Shirts - Long Sleeve	Each	77.43	75.86	2.1
Men's Jeans (long)	Pair	71.12	67.52	5.3
Men's Shoes -Formal	Pair	136.21	120.54	13.0
Women's Shoes - Formal	Pair	81.50	73.19	11.4
Women's Blouse	Each	44.95	36.70	22.5
School shirt - white, size 10	Each	17.37	16.31	6.5
School overall , navy blue, size 8	Each	49.70	49.61	0.2
Brassiere - 36B	Each	25.00	18.89	32.3
Men's boxer briefs	Pk of 3	41.62	36.49	14.1
Ties	Each	16.50	11.75	40.4
HOUSING, WATER, ELECTRICITY, GAS AND OTHER FUELS				
Rent :				
Unfurnished House - 2 Bedrooms	Month	785.00	785.00	0.0
Unfurnished House - 3 Bedrooms	Month	750.00	750.00	0.0
Furnished Apartment - 2 Bedrooms	Month	812.50	812.50	0.0
Water - Consumption Charge	5000 Gallons	35.00	35.00	0.0
Electricity Consumption Charge	300 KWH	326.91	328.41	-0.5
Cooking Gas	20 Lb. Cyl.	38.53	42.51	-9.4
FURNISHING, HOUSEHOLD EQUIPMENT AND HOUSEHOLD MAINTENANCE				
Bed - queen size	Each	2566.00	2848.27	-9.9
Sheets - queen size, 300 thread count, 100% cotton	Each	194.78	196.79	-1.0
Dinner forks	Each	6.93	6.23	11.2
Powder detergent	500g Pk	5.10	5.48	-6.9
Toilet tissue, 280 sheets per roll	1 Roll	1.56	1.61	-3.1

**Table 10.3: Average Annual Retail Price
Selected Items 2024 Compared With 2023**

Items	Unit Of Quantity	Average Retail Price EC\$		Percentage Change Over Previous Year 2023
		2024	2023	
HEALTH				
Doctor's Fee - Gynaecologist	Visit	80.00	80.00	0.0
Doctor's Fee - General Practitioner	Visit	60.00	60.00	0.0
Blood test - CBC	Test	27.39	27.39	0.0
Drugs for Hypertension	Month supply	6.74	6.65	1.4
Drug for Diabetes	Month supply	5.01	5.24	-4.4
Dental Care	Visit	149.47	148.66	0.5
Blood sugar strips	50 Strips	115.00	105.00	9.5
TRANSPORT				
Petrol - Unleaded	Gallon	15.74	15.79	-0.3
Vehicle License (car) - not exd. 3000 lbs	Year	736.67	680.00	8.3
Bus Fare - Mesopotamia	1-Way	3.50	3.50	0.0
Parking fees	1 Hour	2.50	2.50	0.0
Passenger airfare from St Vincent & the Grenadines to:				
<i>Barbados</i>	1-Way	543.45	493.99	10.0
<i>Toronto</i>	1 Month	3014.85	2181.90	38.2
<i>Miami</i>	1 Month	2770.99	2067.56	34.0
COMMUNICATION				
Fixed Line Domestic Rate - peak	1 Minute	0.08	0.08	0.0
Telephone - Consumption Charge	226 Units	18.08	18.08	0.0
Mobile to Mobile - domestic (off network)	1 Minute	1.02	1.00	2.0
Internet	1 month	124.50	121.69	2.3
Cable TV charges (basic)	1 month	69.00	69.00	0.0
Mobile data plan	3-day	12.00	12.00	0.0
RECREATION AND CULTURE				
Television 43 " (smart TV)	Each	1408.21	1378.85	2.1
Tablet - 10.1"	Each	378.16	455.92	-17.1
Laptop Computer - 8 GB	Each	1646.83	1650.47	-0.2
Dog Food (Canned)	375 g Tin	14.00	13.38	4.6
Carnival costume and Band Fees (Adult)	Each	566.67	466.67	21.4
Mathematics textbook	Each	90.43	88.14	2.6
Newspapers	Each	1.50	1.50	0.0
Vaccines for pets	1 Dose	50.00	51.19	-2.3

**Table 10.4: Average Annual Retail Price
Selected Items 2024 Compared With 2023**

ITEMS	Unit Of Quantity	Average Retail Price EC\$		Percentage Change Over Previous Year 2023
		2024	2023	
EDUCATION				
Pre-Primary - Private	Month	318.33	310.00	2.7
Primary School Fee - Private	Term	1400.00	1366.67	2.4
Secondary School Fee - Private	Term	150.00	150.00	0.0
Tertiary Education Tuition - undergraduate, social sciences	Annual	8321.66	8186.03	1.7
Private tutor	Per Session	24.17	20.00	20.9
RESTAURANTS AND HOTELS				
Pizza, pepperoni	Each	21.75	21.19	2.6
Chicken Lunch - regular	Each	15.00	15.00	0.0
Fish Lunch - regular	Each	20.00	20.00	0.0
Fast Food - 2 Pc Chicken and Fries	Each	25.12	21.85	15.0
Roti - Beef	Each	13.96	13.18	5.9
School meals:				
Bread & Chicken	Each	4.31	3.86	11.7
Chicken Lunch	Each	6.92	6.67	3.7
Accommodation at overseas univeristy (on campus), UWI Mona	Per Semester	2294.61	2267.67	1.2
MISCELLANEOUS GOODS AND SERVICES				
Toilet Soap	110g	5.12	4.66	9.9
Toothpaste	170g tube	15.20	13.80	10.1
Men's Haircut	1 Visit	15.00	13.75	9.1
Disposable Diapers (medium)	22pcs per Pk.	22.31	23.70	-5.9
Health Insurance - Group (family)	≥3 Persons	307.00	307.00	0.0
Lady's deodorant	74g bottle	17.38	15.03	15.6
Sanitary napkins, with wings	10pcs per Pk.	8.38	7.92	5.8
3rd Party Motor Vehicle Insurance	Annual	471.49	452.62	4.2

Table 11
Retail Price of Items That Contributed to Change
December 2024 Compared to December 2023

Items	Unit of Quantity	Average Price EC\$		Change in Price	Percentage Change in Price	
		December 2024	December 2023			
INCREASED						
Rice - loose	Lb	2.33	2.23	0.10	4.5	
Cream of wheat	340g Box	21.49	16.90	4.59	27.2	
Cornmeal	340g Pk	4.91	3.76	1.15	30.6	
Cornflakes	680g Box	19.00	13.83	5.17	37.4	
Spaghetti	400g Pk	6.00	4.86	1.14	23.5	
Pork - fresh	Lb	12.00	10.00	2.00	20.0	
Chicken thighs	Lb	3.68	3.03	0.65	21.5	
Corned beef	340g Tin	12.10	9.39	2.71	28.9	
Sardine	106g Tin	5.56	4.29	1.27	29.6	
Condensed milk	397g Tin	6.99	6.02	0.97	16.1	
Ripe plantains	Lb	2.54	2.06	0.48	23.3	
Broccoli - imported	Lb	21.15	14.87	6.28	42.2	
Tomatoes - imported	Lb	15.00	7.89	7.11	90.1	
Pumpkin - local	Lb	4.85	3.92	0.93	23.7	
Kidney beans	454g Pk	8.95	6.19	2.76	44.6	
Green peas	Lb	15.71	12.14	3.57	29.4	
Ketchup	750ml Bottle	10.16	9.10	1.06	11.6	
Teabags	100 Pk	34.35	27.47	6.88	25.05	
Apple juice	1L	11.87	9.60	2.27	23.6	
Brandy	700ml Bottle	132.94	121.28	11.66	9.6	
Tequila	1L Bottle	80.24	60.26	19.98	33.2	
Wine - local	26oz Bottle	34.93	30.55	4.38	14.3	
Cigarettes	10 Pk	4.52	3.88	0.64	16.5	
T-Shirt - cotton, 100%	Each	32.95	27.44	5.51	20.1	
Long jeans	Each	72.95	59.95	13.00	21.7	
Women's Blouse	Each	44.95	37.34	7.61	20.4	
Long school pants - Khaki,	Each	80.00	65.86	14.14	21.5	
Belts	Each	25.00	16.00	9.00	56.3	
Dishwashing liquid	425ml Bottle	11.50	8.50	3.00	35.3	
Wages to domestic helps and maids	Monthly	1000.00	570.00	430.00	75.4	
Wages to babysitters	Monthly	1000.00	635.00	365.00	57.5	
Yard cleaning services	5000 Sqft.	100.00	80.00	20.00	25.0	
Tyres 205-70-R14	Each	353.09	269.53	83.56	31.0	
Spark plugs	Each	15.00	11.99	3.01	25.1	
Engine coolant - 50/50	1 Gal	65.00	45.00	20.00	44.4	
Drivers license	1 Year	125.00	100.00	25.00	25.0	
Vehicle license and inspection:						
	<i>Not exceeding 2000 lb</i>	1 Year	615.00	545.00	70.00	12.8
	<i>Exceeding 2000 lb tar</i>	1 Year	765.00	680.00	85.00	12.5
	<i>Exceeding 3000 lb tar</i>	1 Year	930.00	810.00	120.00	14.8

Table 11 Cont'd
Retail Price of Items That Contributed to Change
December 2024 Compared to December 2023

Items	Unit of Quantity	Average Price EC\$		Change in Price	Percentage Change in Price
		December 2024	December 2023		
INCREASED					
Passenger airfare from St Vincent and the Grenadines to:					
<i>Miami, U.S.A</i>	1 Month	2770.99	2067.56	703.43	34.0
<i>Toronto, Canada</i>	1 Month	3014.85	2181.90	832.95	38.2
<i>Barbados</i>	1 Way	570.35	447.09	123.26	27.6
Television - 65"	Each	5659.82	4804.38	855.44	17.8
Laptop - 4GB DDR4 Ram	Each	1367.54	1217.43	150.11	12.3
Carnival costumes and band fee	Per Adult	600.00	500.00	100.00	20.0
Language Arts Textbook	Book 4	49.29	43.27	6.02	13.9
Pre-primary school fees	Per Month	330.00	312.50	17.50	5.6
Tutor - Primary school	Per Month	30.00	20.00	10.00	50.0
Tutor - Secondary school	Per Month	35.00	20.00	15.00	75.0
Tuition Fees, Foreign Tertiary Institution	Annual	5522.74	4956.83	565.91	11.4
Fast Food - 2 Pc Chicken and Fries	Each	26.75	21.85	4.90	22.4
Fast Food - 3 Pc Chicken and Fries	Each	29.75	26.75	3.00	11.2
Fast Food - 5 Pc Chicken and Fries	Each	56.50	48.50	8.00	16.5
Fast Food - Sandwich	Each	25.80	21.50	4.30	20.0
School meals:					
Bread and chicken	Each	4.00	3.00	1.00	33.3
Roti	Each	5.00	3.00	2.00	66.7
Pizza	Each	5.00	4.00	1.00	25.0
Toothpaste	70g Tube	12.80	10.35	2.45	23.7
Mouthwash	500ml Bottle	9.90	6.89	3.01	43.7
Day care services	Per Month	342.50	280.00	62.50	22.3
Car insurance - comprehensive	1 Year	1341.00	894.00	447.00	50.0
Car insurance - third party	1 Year	403.48	366.85	36.63	10.0
DECREASED					
Cell phone - 128 GB	Each	1542.27	1831.07	-288.80	-15.8
Antihistamine - 10mg	20 Tablets	26.83	30.00	-3.17	-10.6
Pain relievers - 325mg	100 Tablets	9.50	10.50	-1.00	-9.5
Spectacles - 70 mm lense	Each	608.00	699.00	-91.00	-13.0
Electricity consumption	150Kwh	139.68	162.82	-23.14	-14.2
Mattress - queen	Each	649.00	1399.00	-750.00	-53.6
Sheet set - queen	Each	164.95	225.50	-60.55	-26.9