



# CONSUMER PRICE INDEX MONTHLY STATISTICAL BULLETIN



**THE STATISTICAL OFFICE**

**MINISTRY OF FINANCE, ECONOMIC PLANNING  
ETC.**

**ST VINCENT AND THE GRENADINES**

*Tel: 784 457 2921, 456 1111 Ext 3642/3645*

*Fax: 784 456 2430*

**Vol. 12 No.12  
December 2022**

## **TABLE OF CONTENTS**

	<b><u>Page No.</u></b>
Analysis – December 2022 prices	1
End of Year Review 2022	3
 <b>Table No.</b>	
1 Average Retail Price of Selected Items	6
2 Average Retail Price of Selected Items December 2022 compared With December 2021	7
3 The Consumer Price Index by main groups	11
4 The Consumer Price Index contribution to change by Groups	13
5 Monthly Items by Group	14
6 Monthly All Item Index	15
7 Monthly Rate of Inflation	16
8 Accumulated Inflation	17
9 Point-to-Point Inflation Rate	18
10 Average Annual Retail Price	19

**Chart No.**

1	COICOP Percentage Change for the Month of DECEMBER 2022	12
2	Monthly All Items Index	15
3	Monthly Rate of Inflation	16
4	Accumulated Inflation	17
5	Point-to-Point Inflation Rate	18

\* \* \*

## DECEMBER 2022

The consumer price index recorded a decrease of 0.6 percent for the month of December 2022 compared to an increase of 0.3 percent for the month of November 2022, (*see table 3*).

During the month, the “All Items” index was recorded at 121.6 compared to 122.3 for November 2022. Two (2) groups recorded increases, namely, “Food and Non-Alcoholic Beverages” (1.6%) and “Health” (0.1%). Three (3) groups recorded a decrease; “Transport” (2.4%), “Housing, Water, Electricity, Gas and Other Fuels” (1.9%) and “Recreation and Culture” (0.2%). Seven (7) groups remained unchanged; “Alcoholic Beverages, Tobacco and Narcotics”, “Clothing and Footwear”, “Furnishings, Household Equipment and Household Appliances”, “Communication” “Education”, “Restaurants and Hotels” and “Miscellaneous Goods and Services”.

The group index for “Food and Non-Alcoholic Beverages” grew by 1.6 percent due to an increase in the price of several food items which includes: powdered milk, skimmed (45.2%), fish - balahoo (25.0%), fish - deep sea (20.0%), cornflakes (17.3%), dasheen (14.7%), bacon (14.3%), canned vegetables (11.1%), green seasoning (10.1%), mayonnaise (9.3%), whole wheat flour, loose (8.9%), corned beef (8.7%), chicken sausage (7.9%), condensed milk (5.9%), chicken - back (5.3%), chicken - drumstick (4.9%) and eggs (1.8%).

Similarly, the “Health” index grew by 0.1 percent on account of an increase in the price of pain reliever (1.8%).

The 2.4 percent decrease in the “Transport” index is as a result of lower prices for passenger airfare from St Vincent and the Grenadines to London (28.6%) and Toronto (23.8%), petrol (6.2%) and diesel (6.1%).

Meanwhile, the group index for “Housing, Water, Electricity, Gas and Other Fuels” recorded a decline of 1.9 percent due to a reduction of 10.2 percent in the cost of electricity. This

reduction resulted from a lower fuel surcharge rate of 52.52 cents per Kilowatt hour for the month of December 2022 compared to 64.15 cents for the month of November 2022.

The 0.2 percent decline in the index for “Recreation and Culture” was as a result of lower prices for mathematics textbook (3.5%) and pencil (2.6%).

The point-to-point inflation rate stood at 6.7 percent for December 2022 compared to 3.4 percent for December 2021. The groups that accounted for the largest increases during the period were: “Food and Non-Alcoholic Beverages” (14.8%), “Restaurants and Hotels” (13.8%) and “Transport” (13.3%), (*see table 3*).

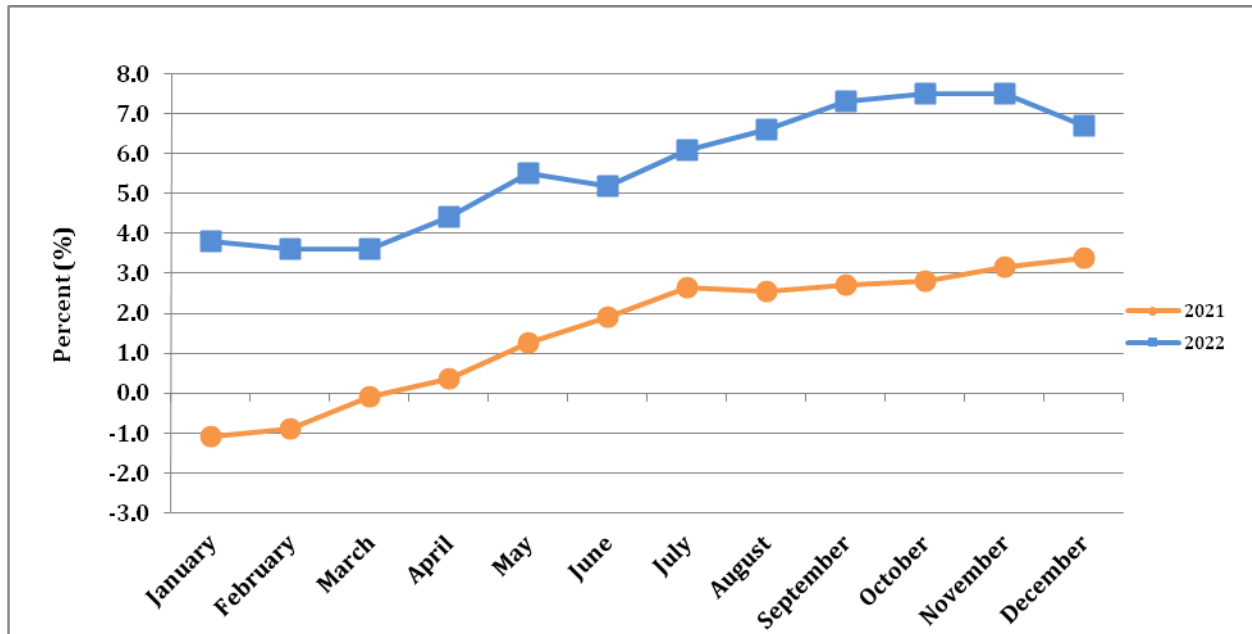
**The consumer price index decreased by 0.6 percent for December 2022. The point-to-point inflation rate stood at 6.7 percent due to relative price changes during the month of December 2022 compared with the same period in the previous year.**

## REVIEW OF 2022

A review of the Consumer Price Index for the year 2022 showed that the annual average “Point-to-Point” inflation rate was 5.7 percent compared to 1.6 percent for the year 2021, (see table 9). The accumulated inflation rate at the end of 2022 was recorded at 6.5 percent while that for 2021 was recorded at 3.4 percent, (see table 8). The average “All Items” index was recorded at 118.9 compared to 112.5 for 2021, (see table 6).

During the year the “Point-to-Point” inflation rate recorded positive values. The highest rate of 7.5 percent was recorded in the months of October and November while the lowest rate of 3.6 percent was recorded in the months of February and March, (see table 9).

### Point to Point of Inflation, January to December 2021 - 2022



The monthly inflation rates fluctuated throughout the year. The highest rate was registered at 1.3 percent which was recorded for the month of April, while the lowest rate was registered at negative 0.6 percent in the month of December, (see table 7).

The “All Items” index moved from 114.7 in January to 121.6 in December. The highest level of 122.3 for the year was recorded in the month of November, while the lowest of 114.7 was recorded in the month of January (*see table 6*).

Eleven (11) groups recorded increases for the year; “Food and Non-Alcoholic Beverages” (14.8%), “Restaurants and Hotels” (13.8%), “Transport” (13.3%), “Furnishings, Household Equipment and Household Maintenance” (8.0%), “Health” (5.6%), “Alcoholic Beverages, Tobacco and Narcotics” (3.2%), “Housing, Water, Electricity, Gas and Other Fuels” (2.7%), “Miscellaneous Goods and Services” (2.6%), “Recreation and Culture” (1.7%), “Clothing and Footwear” (1.6%) and “Education” (1.5%). One (1) group remained unchanged; “Communication” (*see table 3*).

“Food and Non-Alcoholic Beverages” index grew by 14.8 percent due to higher prices for several items, namely: cauliflower (47.1%), pig snout (46.5%), condensed milk (36.2%), bread - small loaf, white (28.6%), vegetable oil (27.2%), chicken back (24.7%), white sugar (22.7%) and whole chicken (21.1%), (*see table 10.1*).

An increase in the price of some school meals, in particular chicken lunch (38.4%) and bread and chicken (27.7%), along with a beef roti (7.8%) and a fish lunch (11.6%), accounted for the growth of 13.8 percent in the group index for “Restaurants and Hotels”, (*see table 10.4*).

The “Transport” index increased by 13.3 percent on account of higher prices for passenger airfare from St. Vincent and the Grenadines to London (36.5%), diesel (48.1%), petrol (29.3%) and bus fares (5.3%), (*see table 10.3*).

“Furnishings, Household Equipment and Household Maintenance” group index increased by 8.0 percent due mainly to an increase in the price of a bed (26.7%), mattress (18.8%), gas stove (17.3%), dishwashing liquid (16.5%), a pack of candles (16.1%) and washing powder (12.2%), (*see table 10.2*).

The 5.6 percent increase in the “Health” index was on account of higher prices for drugs that are being used in the treatment of cancer (49.2%), diabetes (19.8%) and hypertension (14.7%). There was also an increase in the price for a visit to the pediatrician (16.7%), pain relievers (9.6%), cold preparation (5.8%) and dental care (2.9%), (*see table 10.3*).

“Alcoholic Beverages, Narcotics and Tobacco” index increased by 3.2 percent as a result of higher prices for imported rum (22.3%), local rum (12.8%), cigarettes (7.1%) and local table wine (3.2%), (*see table 10.2*).

The 2.7 percent growth in the index for “Housing, Water, Electricity, Gas and Other Fuels” was on account of an increase in the prices of steel rods (28.3%), electricity (27.4%), lumber (27.1%), cooking gas (15.6%), cement (15.5%), charcoal (9.1%), oil paint (5.3%) and galvanize sheets (2.1%), (*see table 10.2*).

Meanwhile, “Miscellaneous Goods and Services” increased by 2.6 percent due mainly to an increase in the price for a deodorant (14.6%) and sanitary napkins (11.6%), (*see table 10.4*).

The 1.7 percent growth in the “Recreation and Culture” index was on account of an increase in the price of canned dog food (19.8%) and cat food (16.2%), (*see table 10.3*).

An increase in the prices of women's panties (23.0%) and women's blouse (15.1%) were mainly responsible for the 1.6 percent increase in the “Clothing and Footwear” index (*see table 10.2*).

The “Education” index grew by 1.5 percent due to an increase in private school fees. Secondary school fees increased by 16.7 percent, primary school fees by 4.9 percent and pre-primary school fees by 4.6 percent, (*see table 10.4*).



**Table 1: Average Retail Price of Selected Items**

Items	Unit of Quantity	Average Price		Change in Price	Percentage Change in Price
		EC\$			
		December 2022	November 2022		
<b>INCREASED</b>					
Whole wheat flour, loose	Lb	2.20	2.02	0.18	8.9
Cornflakes	18oz Box	14.89	12.69	2.20	17.3
Chicken - drumstick	Lb	4.05	3.86	0.19	4.9
Chicken - back	Lb	2.56	2.43	0.13	5.3
Bacon	200g Pk	10.00	8.75	1.25	14.3
Chicken sausage	5oz Tin	3.40	3.15	0.25	7.9
Corned beef	340g Tin	9.54	8.78	0.76	8.7
Fish - deep sea	Lb	12.00	10.00	2.00	20.0
Fish - balahoo	Lb	2.50	2.00	0.50	25.0
Condensed milk	390g Tin	4.69	4.43	0.26	5.9
Powdered milk, skimmed	Lb	13.43	9.25	4.18	45.2
Eggs	Per dozen	13.08	12.85	0.23	1.8
Dasheen	Lb	2.18	1.90	0.28	14.7
Tomatoes	Lb	7.30	6.79	0.51	7.5
Canned Vegetables	14.5oz Tin	12.40	11.16	1.24	11.1
Mayonnaise	16oz Bottle	12.35	11.30	1.05	9.3
Green seasoning	750ml Bottle	11.67	10.60	1.07	10.1
Apple juice	Litre box	7.98	7.57	0.41	5.4
Pain relievers	100 Tabs per pack	10.44	10.26	0.18	1.8
<b>DECREASED</b>					
Plantains	Lb	1.73	1.84	-0.11	-6.0
Red kidney beans, loose	Lb	6.71	6.90	-0.19	-2.8
Ketchup	750ml	6.50	8.07	-1.57	-19.5
Ground cinnamon	3.37oz bottle	8.05	11.27	-3.22	-28.6
Electricity	140 Kwh	143.53	159.81	-16.28	-10.2
Petrol, unleaded	Gal	15.06	16.06	-1.00	-6.2
Diesel fuel	Gal	16.37	17.44	-1.07	-6.1
Passenger airfare from St Vincent and the Grenadines to:					
<i>Toronto, Canada</i>	1 month	3335.00	4377.82	-1042.82	-23.8
<i>London, England</i>	1 month	3750.00	5255.00	-1505.00	-28.6
Mathematics Textbook, Form 4	Each	83.51	86.55	-3.04	-3.5
Pencil	Each	0.75	0.77	-0.02	-2.6

**Table 2.1: Average Retail Price of Selected Items  
December 2022 Compared With December 2021**

Items	Unit of Quantity	Average EC\$		Change in Price	Percentage Change in Price
		December 2022	December 2021		
<b>FOOD AND NON-ALCOHOLIC BEVERAGES</b>					
Beef - Fresh	Lb.	10.00	9.00	1.00	11.11
Chicken - Whole	Lb.	9.45	7.64	1.81	23.69
Chicken - Leg Quarters	Lb.	3.76	3.15	0.61	19.37
Chicken - Backs	Lb.	2.56	2.01	0.55	27.36
Chicken - Wings	Lb.	6.23	5.07	1.16	22.88
Turkey Wings	Lb.	4.91	4.15	0.76	18.31
Fish - Fresh (Deep Sea)	Lb.	12.00	9.00	3.00	33.33
Fish - Fresh (Jacks)	Lb.	5.00	5.00	0.00	0.00
Fish - Fresh (Robin)	Lb.	5.00	5.00	0.00	0.00
Chicken Franks	340 g Pk	7.60	6.68	0.92	13.77
Luncheon Meat (pork)	340 g	9.65	8.46	1.19	14.07
Codfish	Lb.	16.83	15.40	1.43	9.29
Cornflakes	12 oz	16.39	14.93	1.46	9.78
Pasta - Elbows	340 g	4.95	4.88	0.07	1.43
Milk - Evaporated	410g Tin	4.33	3.44	0.89	25.87
Milk - Condensed	397g Tin	4.12	3.92	0.20	5.10
Bread- Small Loaf, white	5 Pk	2.74	1.89	0.85	44.97
Bread - Large Sliced Pan Loaf (white)	Each	5.14	4.19	0.95	22.67
Eggs	Doz	13.08	10.54	2.54	24.10
Orange Juice	19 oz Tin	9.97	9.61	0.36	3.75
Sugar - Brown ( loose)	Lb.	2.26	1.73	0.53	30.64
Sugar - White ( loose)	Lb.	2.51	2.20	0.31	14.09
Flour - Loose	Lb.	1.80	1.36	0.44	32.35
Flour - Packaged ( white)	2 kg	8.89	6.84	2.05	29.97
Flour - Packaged ( wholewheat)	2 kg	9.62	7.18	2.44	33.98
Rice - Loose	Lb.	1.97	1.91	0.06	3.14
Rice - Packaged	2Kg	10.91	10.90	0.01	0.09
Bananas (ripe)	Lb.	1.58	1.50	0.08	5.33
Breadfruit	Lb.	2.65	2.58	0.07	2.71
Eddoes	Lb.	2.98	3.08	-0.10	-3.25
Dasheens	Lb.	2.18	1.98	0.20	10.10
Sweet Potatoes	Lb.	2.84	2.93	-0.09	-3.07
Oranges	Each	1.12	1.01	0.11	10.89
Tomatoes	Lb.	7.30	6.16	1.14	18.51
Cooking Margarine	445g Tub	11.59	10.26	1.33	12.96
Vegetable Oil	Litre	18.33	15.39	2.94	19.10
Powdered Chocolate	300g Pk	11.24	10.70	0.54	5.05
Hairoun Fruit Cocktail ( not cold)	280 ml Bottle	3.03	2.92	0.11	3.77
Vitamalt	310 ml Bottle	6.02	5.85	0.17	2.91

**Table 2.2: Average Retail Price of Selected Items  
December 2022 Compared With December 2021**

Items	Unit of Quantity	Average EC\$		Change in Price	Percentage Change in Price
		December 2022	December 2021		
<b>ALCOHOLIC BEVERAGES, TOBACCO &amp; NARCOTICS</b>					
Rum - Local (White)	750 ml Bot.	37.91	33.01	4.90	14.84
Beer - Local	280 ml Bot.	5.04	5.09	-0.05	-0.98
Cigarettes	Pkt. (10)	3.85	3.55	0.30	8.45
Table wine (local)	26 oz Bot.	24.83	24.01	0.82	3.42
<b>CLOTHING &amp; FOOTWEAR</b>					
Textile material - Terelyne	Yd.	35.00	35.00	0.00	0.00
Textile material - Linen	Yd.	17.95	17.95	0.00	0.00
Men's Shirts - Long Sleeve	Each	69.87	69.92	-0.05	-0.07
Men's Jeans ( long) - size 30	Pair	49.95	49.95	0.00	0.00
Men's Shoes -Formal	Pair	82.57	78.31	4.26	5.44
Women's Shoes - Formal	Pair	92.90	88.10	4.80	5.45
Women's 2Pc Skirtsuit ( polyester) large	Each	108.31	102.48	5.83	5.69
Women's Blouse ( cotton/Spandex)	Each	29.95	29.95	0.00	0.00
<b>HOUSING, WATER, ELECTRICITY GAS AND OTHER FUELS</b>					
Rent :					
Unfurnished House - 2 Bedrooms	Month	567.86	567.86	0.00	0.00
Unfurnished House - 3 Bedrooms	Month	612.50	612.50	0.00	0.00
Furnished Apartment - 2 Bedrooms	Month	791.67	791.67	0.00	0.00
Cement - Portland ( grey)	94 Lbs	25.29	22.92	2.37	10.34
Galvanise Sheets 10 ft.	Length	111.33	107.25	4.08	3.80
Oil Paint	Gallon	145.00	134.83	10.17	7.54
Lumber - Dressed Treated Yellow Pine (1x12x12)	Length	124.78	89.32	35.46	39.70
Water - Consumption Charge	5000 Gallons	37.50	37.50	0.00	0.00
Kerosene	1 Gallon	6.61	6.61	0.00	0.00
Charcoal	Sack	60.00	60.00	0.00	0.00
Cooking Gas	20 Lb. Cyl.	45.76	43.90	1.86	4.24
Electricity Consumption Charge	140 KWH	143.53	129.89	13.64	10.50
<b>FURNISHING, HOUSEHOLD EQUIPMENT AND HOUSEHOLD MAINTENANCE</b>					
Bed - Cherry 54"x75"	Each	1,635.53	1,167.61	467.92	40.08
Double size sheets - coloured/cotton	Each	107.47	105.11	2.36	2.25
Frying Pan - 12" - non-stick	Each	52.35	53.11	-0.76	-1.43
Laundry Soap	Each	1.55	1.18	0.37	31.36
Electrical Bulb - 60W	Each	7.94	8.07	-0.13	-1.61

**Table 2.3: Average Retail Price of Selected Items  
December 2022 Compared With December 2021**

Items	Unit of Quantity	Average EC\$		Change in Price	Percentage Change in Price
		December 2022	December 2021		
<b>HEALTH</b>					
Doctor's Fee - Gynaecologist	Visit	60.00	60.00	0.00	0.00
Eye Care	Test	100.00	100.00	0.00	0.00
Hospitalisation (Private Ward)	Day	75.00	75.00	0.00	0.00
Drugs for Hypertension	Month supply	4.74	3.82	0.92	24.08
Drug for Diabetes	Month supply	12.17	13.99	-1.82	-13.01
Cough, Cold Preparation	125 ml.	16.08	15.35	0.73	4.76
Dental Care	Visit	150.00	145.83	4.17	2.86
Chest X- ray	Test	150.00	150.00	0.00	0.00
<b>TRANSPORT</b>					
Petrol - Unleaded	Gallon	15.06	14.48	0.58	4.01
Vehicle License (car) - not exd. 2000 lbs	Year	590.00	590.00	0.00	0.00
Bus Fare - Mesopotamia	One Way	3.50	3.00	0.50	16.67
Boat Fare - Bequia	One Way	25.00	25.00	0.00	0.00
<b>COMMUNICATION</b>					
Telephone Service - rental of line- domestic	Month	23.66	23.66	0.00	0.00
Telephone - Consumption Charge	226 Units	18.08	18.08	0.00	0.00
Internet Charge	Month	104.00	104.00	0.00	0.00
Fixed Line Domestic Rate - peak	Minute	0.08	0.08	0.00	0.00
Mobile to Mobile - domestic	Minute	0.93	0.93	0.00	0.00
<b>RECREATION AND CULTURE</b>					
Television 26 " Flat panel	Each	2,019.80	2,019.80	0.00	0.00
Cable TV Basic Charge	Month	79.33	79.33	0.00	0.00
Laptop Computer -13.3 " screen 2 GB	Each	3,902.23	3,902.23	0.00	0.00
Desktop Computer - 14" Monitor 3 GB	Each	2,109.18	2,109.18	0.00	0.00
Remote Control Car	Each	288.49	267.97	20.52	7.66
Dog Food (Canned)	374 g Tin	4.10	4.08	0.02	0.49
Dance Admission to Night Club	Per Person	20.00	20.00	0.00	0.00
Carnival costume and Band Fees (Adult)	Each	375.00	375.00	0.00	0.00

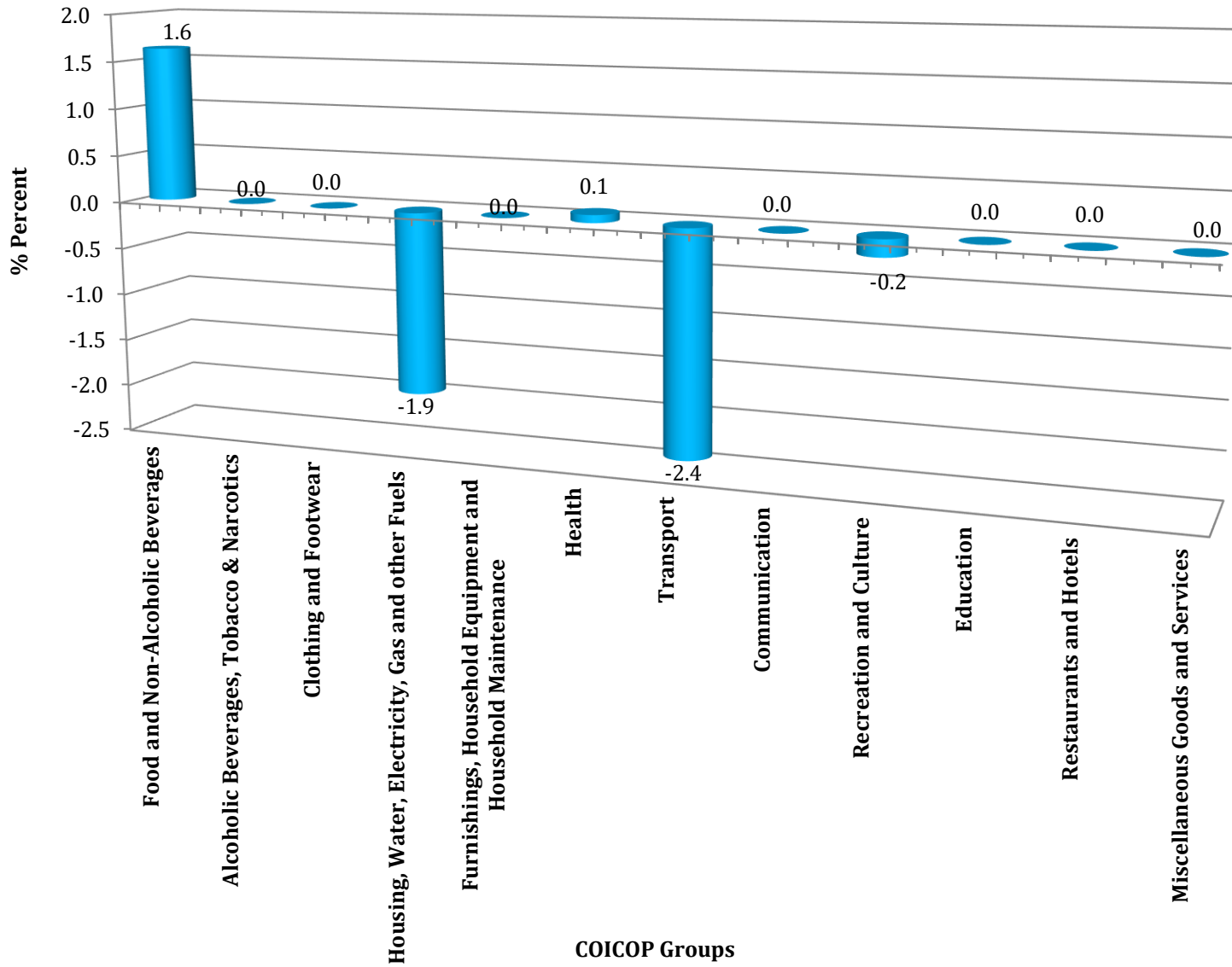
**Table 2.4: Average Retail Price of Selected Items  
December 2022 Compared With December 2021**

Items	Unit of Quantity	Average EC\$		Change in Price	Percentage Change in Price
		December 2022	December 2021		
<b>EDUCATION</b>					
Pre-Primary - Private	Month	227.50	217.50	10.00	4.60
Primary School Fee - Private	Term	975.00	850.00	125.00	14.71
Secondary School Fee - Private	Term	150.00	100.00	50.00	50.00
Newspaper - Local	Each	1.50	1.50	0.00	0.00
Exercise Book - Primary - 24 leaves	Each	1.30	0.85	0.45	52.94
Lead Pencils	Each	0.75	0.75	0.00	0.00
Mathematics Textbook - Form 4	Each	83.51	86.55	-3.04	-3.51
Tuition for local evening classes	Per Subject	100.00	100.00	0.00	0.00
<b>RESTAURANTS AND HOTELS</b>					
Chicken Lunch - regular	Each	16.20	14.49	1.71	11.80
Fish Lunch - regular	Each	20.00	17.32	2.68	15.47
Fast Food - 2 Pc Chicken and Fries	Each	21.85	18.75	3.10	16.53
<b>MISCELLANEOUS GOODS AND SERVICES</b>					
Toilet Soap	125g	3.83	3.73	0.10	2.68
Toothpaste	130g Tube	10.62	9.99	0.63	6.31
Men's Haircut	Visit	10.00	10.00	0.00	0.00
Women's Hairdressing ( Relaxer )	Visit	72.46	69.82	2.64	3.78
Disposable Diapers (medium)	10 per Pk.	15.35	14.05	1.30	9.25
Health Insurance - Group (family)	≥3 Persons	307.00	307.00	0.00	0.00
Legal Expenses (Affidavit)	Fee	250.00	250.00	0.00	0.00

**Table 3: The Consumer Price Index by Main Groups**  
**January 2010 = 100**

	Groups	Weight	November 2022	December 2022	December 2021	Percentage Change Over Previous:	
						Month November	Year December
01.	Food and Non-Alcoholic Beverages	21.91	141.5	143.8	125.3	1.6	14.8
02.	Alcoholic Beverages, Tobacco & Narcotics	3.87	130.7	130.7	126.6	0.0	3.2
03.	Clothing and Footwear	3.22	106.3	106.3	104.6	0.0	1.6
04.	Housing, Water, Electricity, Gas and other Fuels	30.06	109.7	107.6	104.8	-1.9	2.7
05.	Furnishings, Household Equipment and Household Maintenance	6.59	122.1	122.1	113.1	0.0	8.0
06.	Health	1.79	122.2	122.3	115.8	0.1	5.6
07.	Transport	11.84	143.7	140.3	123.8	-2.4	13.3
08.	Communication	9.41	112.0	112.0	112.0	0.0	0.0
09.	Recreation and Culture	3.81	111.9	111.7	109.8	-0.2	1.7
10.	Education	1.32	110.7	110.7	109.1	0.0	1.5
11.	Restaurants and Hotels	1.87	131.1	131.1	115.2	0.0	13.8
12.	Miscellaneous Goods and Services	4.31	109.2	109.2	106.4	0.0	2.6
	<b>ALL ITEMS</b>	<b>100.00</b>	<b>122.3</b>	<b>121.6</b>	<b>114.0</b>	<b>-0.6</b>	<b>6.7</b>

**Chart 1. COICOP Groups Percentage Change for December 2022**



**Table 4: The Consumer Price Index by Main Groups**  
**January 2010 = 100**  
**Contribution to Change**

	Groups	Weight	November 2022	December 2022	Percentage Change	Cost Weight		Change in Cost Weight	% Contribution to Change
						November 2022	December 2022		
1.	Food and Non-Alcoholic Beverages	21.91	141.5	143.8	1.6	3,100.27	3,150.66	50.4	-72.0
2.	Alcoholic Beverages, Tobacco & Narcotics	3.87	130.7	130.7	0.0	505.81	505.81	0.0	0.0
3.	Clothing and Footwear	3.22	106.3	106.3	0.0	342.29	342.29	0.0	0.0
4.	Housing, Water, Electricity, Gas and other Fuels	30.06	109.7	107.6	-1.9	3,297.58	3,234.46	-63.1	90.2
5.	Furnishings, Household Equipment and Household Maintenance	6.59	122.1	122.1	0.0	804.64	804.64	0.0	0.0
6.	Health	1.79	122.2	122.3	0.1	218.74	218.92	0.2	-0.3
7.	Transport	11.84	143.7	140.3	-2.4	1,701.41	1,661.15	-40.3	57.5
8.	Communication	9.41	112.0	112.0	0.0	1,053.92	1,053.92	0.0	0.0
9.	Recreation and Culture	3.81	111.9	111.7	-0.2	426.34	425.58	-0.8	1.1
10.	Education	1.32	110.7	110.7	0.0	146.12	146.12	0.0	0.0
11.	Hotels and Restaurants	1.87	131.1	131.1	0.0	245.16	245.16	0.0	0.0
12.	Miscellaneous Goods and Services	4.31	109.2	109.2	0.0	470.65	470.65	0.0	0.0
	<b>ALL ITEMS</b>	<b>100.00</b>	<b>122.3</b>	<b>121.6</b>	<b>-0.6</b>	<b>12,230.00</b>	<b>12,160.00</b>	<b>-70.0</b>	<b>100.0</b>



Table 5: Monthly Index - 2021

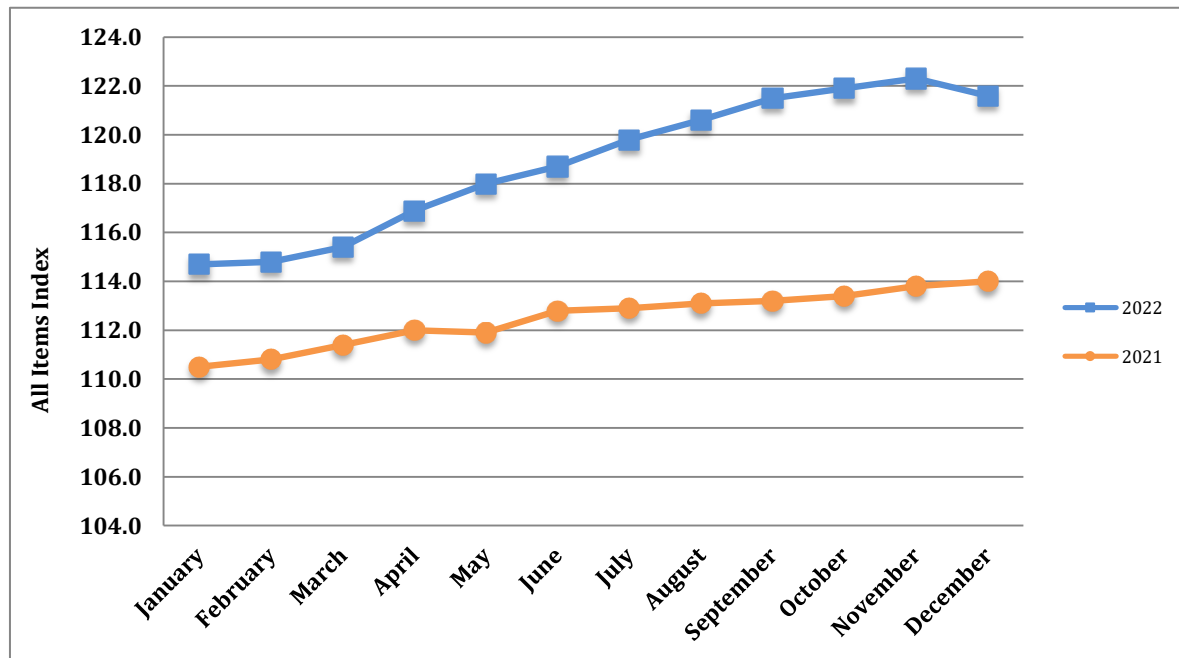
January 2010 = 100

Groups	All Items	Food & Non-Alcoholic Beverages	Alcoholic Beverages Tobacco & Narcotics	Clothing & Footwear	Housing Water Electricity Gas and Fuels	Furnishings Household Equipment & Household Maintenance	Health	Transport	Communication	Recreation & Culture	Education	Hotels & Restaurants	Miscellaneous Goods and Services
<b>WEIGHT</b>	100.00	21.91	3.87	3.22	30.06	6.59	1.79	11.84	9.41	3.81	1.32	1.87	4.31
<b>MONTH</b>													
January	114.7	126.0	127.3	104.6	105.1	113.3	117.8	127.2	112.0	110.0	108.9	115.0	106.5
February	114.8	126.8	129.3	104.7	104.2	114.0	118.0	128.4	112.0	110.1	108.9	115.3	106.5
March	115.4	127.7	129.6	104.7	105.7	114.4	118.0	127.6	112.0	110.1	108.9	116.6	106.9
April	116.9	129.9	129.2	104.6	107.5	114.9	119.7	129.1	112.0	110.1	108.9	126.0	107.5
May	118.0	131.8	129.2	105.5	108.3	116.0	120.8	131.7	112.0	110.1	108.9	127.8	108.4
June	118.7	132.1	129.8	105.5	109.4	116.3	122.0	133.8	112.0	110.1	108.9	127.8	108.4
July	119.8	134.0	131.1	105.5	110.8	117.3	121.8	135.8	112.0	110.2	108.9	127.8	108.5
August	120.6	136.7	131.2	106.3	110.4	117.7	121.8	138.7	112.0	110.8	108.9	127.8	108.6
September	121.5	138.5	131.2	106.3	109.8	119.6	123.3	143.4	112.0	111.8	110.7	128.0	108.7
October	121.9	141.2	131.0	106.3	109.6	120.9	123.3	142.5	112.0	111.9	110.7	129.4	109.1
November	122.3	141.5	130.7	106.3	109.7	122.1	122.2	143.7	112.0	111.9	110.7	131.1	109.2
December	121.6	143.8	130.7	106.3	107.6	122.1	122.3	140.3	112.0	111.7	110.7	131.1	109.2

**Table 6: Monthly All Items Index, January to December 2017 - 2022**

Months	2017	2018	2019	2020	2021	2022
January	106.7	109.6	111.4	111.7	110.5	114.7
February	106.4	109.4	110.9	111.8	110.8	114.8
March	106.3	109.6	111.0	111.5	111.4	115.4
April	107.5	110.4	111.5	111.6	112.0	116.9
May	108.0	110.5	111.0	110.5	111.9	118.0
June	108.3	110.6	111.6	110.7	112.8	118.7
July	108.5	110.7	111.8	110.0	112.9	119.8
August	108.4	110.8	111.8	110.3	113.1	120.6
September	108.4	110.9	111.5	110.2	113.2	121.5
October	108.5	111.0	111.5	110.3	113.4	121.9
November	108.8	110.9	111.9	110.3	113.8	122.3
December	109.3	110.8	111.3	110.2	114.0	121.6
<b>Average</b>	<b>107.9</b>	<b>110.4</b>	<b>111.4</b>	<b>110.8</b>	<b>112.5</b>	<b>118.9</b>

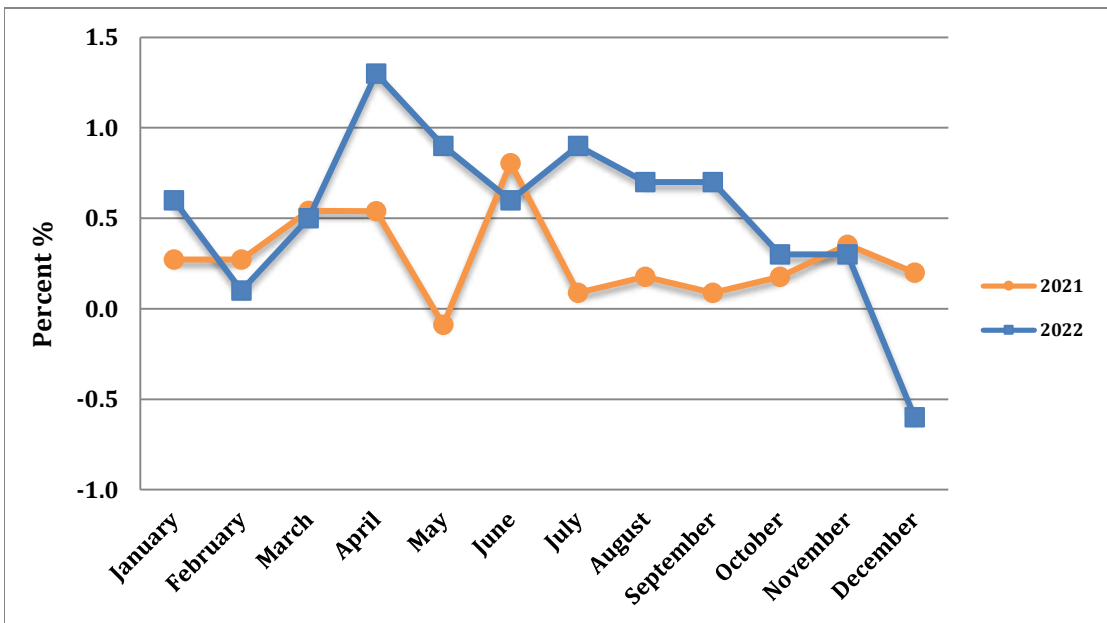
**Chart 2: Monthly All Items Index, January to December 2020 - 2021**



**Table 7: Monthly Rate of Inflation, January to December 2017 - 2022**

Months	2017	2018	2019	2020	2021	2022
January	0.6	0.3	0.5	0.4	0.3	0.6
February	-0.3	-0.2	0.1	0.4	0.3	0.1
March	-0.1	0.2	0.2	0.2	0.5	0.5
April	1.1	0.7	0.6	0.3	0.5	1.3
May	0.5	0.1	0.2	-0.7	-0.1	0.9
June	0.3	0.1	0.7	-0.5	0.8	0.6
July	0.2	0.1	0.9	-1.2	0.1	0.9
August	-0.1	0.1	0.9	-0.9	0.2	0.7
September	0.0	0.1	0.6	-1.0	0.1	0.7
October	0.1	0.1	0.6	-0.9	0.2	0.3
November	0.3	-0.1	1.0	-0.9	0.4	0.3
December	0.5	-0.1	0.5	-1.0	0.2	-0.6

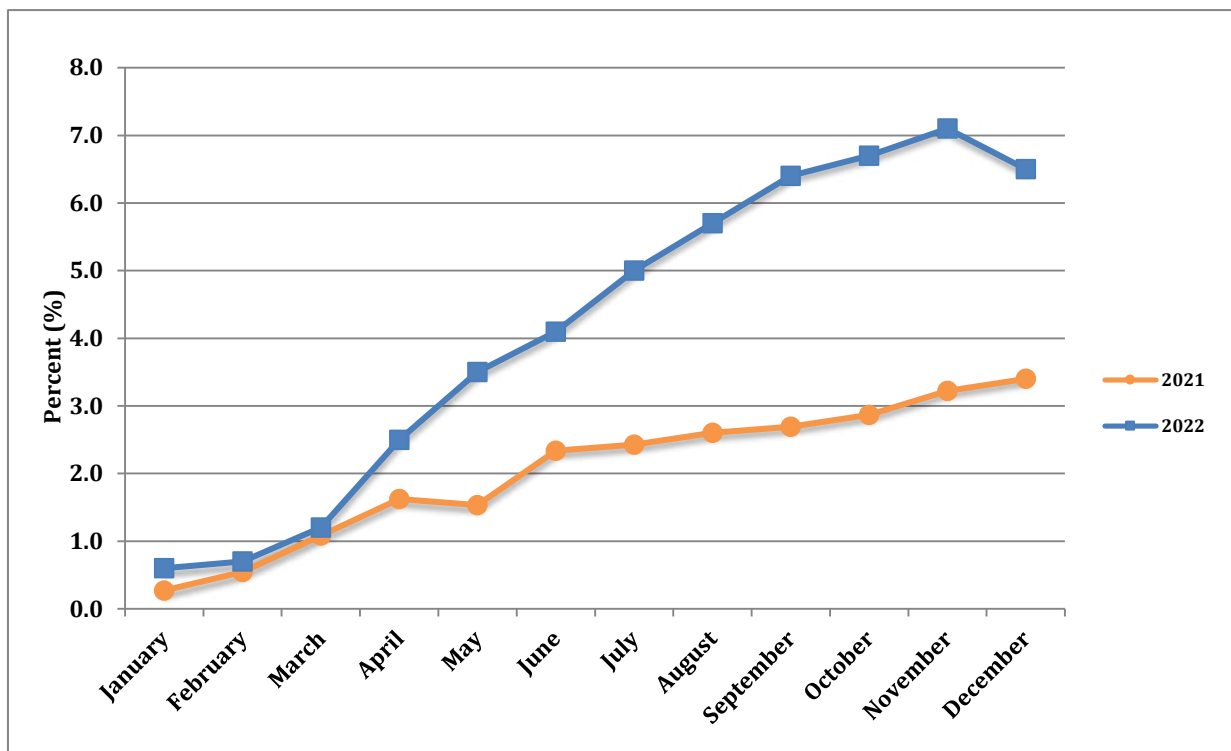
**Chart 3: Monthly Rate of Inflation, January to December 2020 - 2021**



**Table 8: Accumulated Inflation, January to December 2017 - 2022**

Months	2017	2018	2019	2020	2021	2022
January	0.6	0.3	0.5	0.4	0.3	0.6
February	0.3	0.1	-0.4	0.1	0.5	0.7
March	0.2	0.3	0.1	-0.3	1.1	1.2
April	1.3	1.0	0.5	0.1	1.6	2.5
May	1.8	1.1	-0.4	-0.1	1.5	3.5
June	2.1	1.2	0.5	0.3	2.3	4.1
July	2.2	1.3	0.2	-0.6	2.4	5.0
August	2.2	1.4	0.0	0.3	2.6	5.7
September	2.2	1.5	-0.3	-0.1	2.7	6.4
October	2.2	1.5	0.0	0.1	2.9	6.7
November	2.5	1.5	0.4	0.0	3.2	7.1
December	3.0	1.4	-0.5	-0.1	3.4	6.5

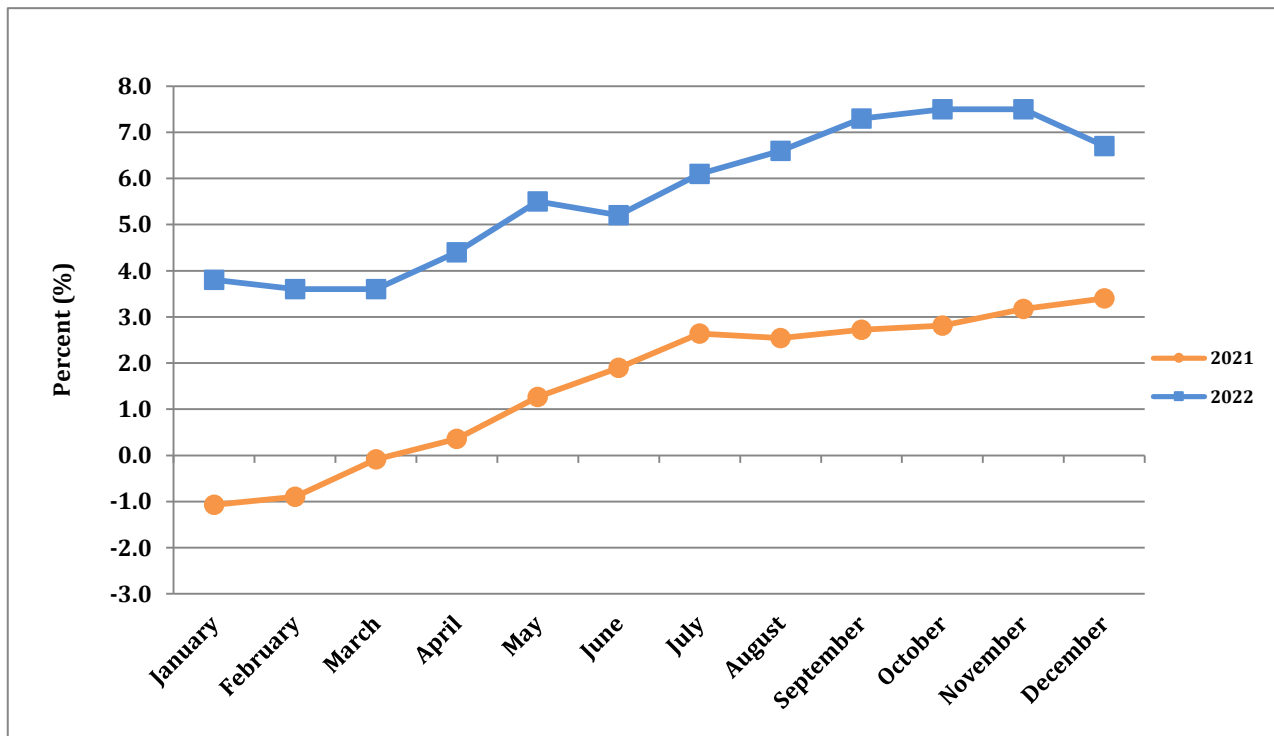
**Chart 4: Accumulated Inflation, January to December 2020 - 2021**



**Table 9: Point to Point Rate of Inflation, January to December 2017 - 2022**

Months	2017	2018	2019	2020	2021	2022
January	1.9	2.7	1.6	0.3	-1.1	3.8
February	1.7	2.8	1.4	0.8	-0.9	3.6
March	1.4	3.1	1.3	0.5	-0.1	3.6
April	2.9	2.7	1.0	0.1	0.4	4.4
May	2.6	2.3	0.5	-0.5	1.3	5.5
June	1.8	2.1	0.9	-0.8	1.9	5.2
July	2.1	2.0	1.0	-1.6	2.6	6.1
August	2.0	2.2	0.9	-1.3	2.5	6.6
September	1.9	2.3	0.5	-1.2	2.7	7.3
October	2.3	2.3	0.5	-1.1	2.8	7.5
November	2.4	1.9	0.9	-1.4	3.2	7.5
December	3.0	1.4	0.5	-1.0	3.4	6.7
<b>Average</b>	<b>2.2</b>	<b>2.3</b>	<b>0.9</b>	<b>-0.6</b>	<b>1.6</b>	<b>5.7</b>

**Chart 5: Point to Point Rate of Inflation, January to December 2021 - 2022**



**Table 10.1: Average Annual Retail Price  
Selected Items 2022 Compared With 2021**

Items	Unit Of Quantity	Average Retail Price EC\$		Percentage Change Over Previous Year
		2022	2021	2021
<b>FOOD AND NON-ALCOHOLIC</b>				
<b>BEVERAGES</b>				
Beef - Fresh	Lb.	9.92	9.00	10.2
Chicken - Whole	Lb.	8.84	7.30	21.1
Chicken - Leg Quarters	Lb.	3.52	3.00	17.3
Chicken - Backs	Lb.	2.32	1.86	24.7
Chicken - Wings	Lb.	5.75	4.95	16.2
Turkey Wings	Lb.	4.49	3.68	22.0
Fish - Fresh (Deep Sea)	Lb.	10.08	8.83	14.2
Fish - Fresh (Jacks)	Lb.	5.00	5.00	0.0
Fish - Fresh (Robins)	Lb.	5.00	5.00	0.0
Chicken Franks	340 g Pk	7.30	6.46	13.0
Luncheon Meat (pork)	340 g	9.13	8.25	10.7
Codfish	Lb.	16.26	14.73	10.4
Cornflakes	12 oz	15.56	14.93	4.2
Pasta - Elbows	340 g	5.18	4.76	8.8
Milk - Evaporated	410g Tin	3.91	3.42	14.3
Milk - Condensed	397g Tin	4.10	3.92	4.6
Bread- Small Loaf, white	5 Pk	2.43	1.89	28.6
Bread - Large Sliced Pan Loaf (white)	Each	4.74	4.19	13.1
Eggs	Doz	11.36	9.75	16.5
Orange Juice	19 oz Tin	9.71	9.37	3.6
Sugar - Brown ( loose)	Lb.	1.94	1.69	14.8
Sugar - White ( loose)	Lb.	2.27	1.85	22.7
Flour - Loose	Lb.	1.60	1.36	17.6
Flour - Packaged ( white)	2 kg	8.04	6.85	17.4
Flour - Packaged ( wholewheat)	2 kg	8.56	7.18	19.2
Rice - Loose	Lb.	1.94	1.86	4.3
Rice - Package	2 kg	10.92	10.82	0.9
Bananas	Lb.	1.58	1.48	6.8
Breadfruit	Lb.	2.71	2.58	5.0
Eddoes	Lb.	2.99	3.09	-3.2
Dasheens	Lb.	1.94	2.20	-11.8
Sweet Potatoes	Lb.	2.82	2.93	-3.8
Oranges	Each	1.06	0.92	15.2
Tomatoes	Lb.	5.67	5.40	5.0
Cooking Margarine	445g Tub	11.02	9.78	12.7
Vegetable Oil	1 Litre	16.81	13.22	27.2
Powdered Chocolate	300g Pk	11.07	10.64	4.0
Hairoun Fruit Cocktail ( not cold)	280 ml Bottle	2.99	2.90	3.1
Vitamalt	310 ml Bottle	5.94	5.83	1.9
Cauliflower	Lb.	10.28	6.99	47.1
Chicken leg	Lb.	3.52	2.95	19.3
Condensed milk	395g tin	2.41	1.77	36.2
Pig snout	Lb.	16.31	11.13	46.5
Cornmeal	Lb.	3.16	2.74	15.3

**Table 10.2: Average Annual Retail Price  
Selected Items 2022 Compared With 2021**

Items	Unit Of Quantity	Average Retail Price EC\$		Percentage Change Over Previous Year 2021
		2022	2021	
<b>ALCOHOLIC BEVERAGES, TOBACCO &amp; NARCOTICS</b>				
Rum - Local (White)	750 ml Bottle	37.18	32.95	12.8
Beer - Local	280ml Bottle	5.08	5.08	0.0
Cigarettes	Pkt. (10)	3.75	3.50	7.1
Table wine ( Local )	26 oz Bottle	24.73	23.96	3.2
Rum - Imported	750ml Bottle	26.47	21.65	22.3
<b>CLOTHING &amp; FOOTWEAR</b>				
Textile material - Terelyne	Yd.	35.00	42.55	-17.7
Textile material - Linen	Yd.	17.95	17.95	0.0
Men's Shirts - Long Sleeve	Each	69.89	69.93	-0.1
Men's Jeans ( long ) - size 30	Each	49.95	49.95	0.0
Men's Shoes -Formal	Pair	80.43	78.67	2.2
Women's Shoes - Formal	Pair	90.49	88.51	2.2
Women's 2Pc Skirtsuit ( polyester) large	Each	106.37	102.48	3.8
Women's Blouse ( polyester/ cotton)	Each	44.00	38.24	15.1
Women's Dress, casual, medium	Each	40.00	40.00	0.0
Women's Panties, medium	Each	7.32	5.95	23.0
Textile material, polyester, 60"	1 yard	24.95	24.45	2.0
<b>HOUSING, WATER, ELECTRICITY, GAS AND OTHER FUELS</b>				
Rent :				
Unfurnished House -2 Bedroom	1Month	567.86	567.86	0.0
Unfurnished House -3 Bedroom	1Month	612.50	612.50	0.0
Furnished Apartment- 2 Bedroom	1Month	791.67	791.67	0.0
Cement - Portland ( grey)	94 Lbs	24.29	21.03	15.5
Galvanise Sheets 10 ft.	1 Length	109.63	107.37	2.1
Oil Paint	1 Gal.	141.89	134.73	5.3
Lumber -Dressed Treated Yellow Pine (1x12x12)	1 Length	103.33	81.29	27.1
Water - Consumption Charge	5000 Gals.	37.50	37.50	0.0
Kerosene	1 Gal.	6.61	6.61	0.0
Charcoal	1 Sack	60.00	55.00	9.1
Cooking Gas	20 Lb. Cyl.	45.14	39.05	15.6
Electricity Consumption Charge	140 KWH	151.60	118.96	27.4
Steel rods, 1/2"	1 Length	28.02	21.84	28.3
French door, 36"	Each	441.45	421.68	4.7
<b>FURNISHING, HOUSEHOLD EQUIPMENT AND HOUSEHOLD MAINTENANCE</b>				
Bed - Cherry 54"x75"	Each	1479.56	1167.61	26.7
Double size sheets - coloured/cotton	Each	105.59	105.11	0.5
Bath towel	Each	34.33	31.80	8.0
Gas Stove, 4 Burner 30"	Each	1740.59	1483.48	17.3
Mattress, foam - double	Each	618.43	520.52	18.8
Aluminum pot, 10"	Each	110.00	104.60	5.2
Candles	4 pk	7.20	6.20	16.1
Electrical Bulb - 60W	Each	7.88	7.44	5.9
Disinfectant	30oz bottle	5.59	5.22	7.1
Dishwashing liquid	450ml	8.53	7.32	16.5
Washing powder	400g	5.50	4.90	12.2
Pillow case	1 pair	15.90	14.83	7.2

**Table 10.3: Average Annual Retail Price  
Selected Items 2022 Compared With 2021**

Items	Unit Of Quantity	Average Retail Price EC\$		Percentage Change Over Previous Year 2021
		2022	2021	
<b>HEALTH</b>				
Doctor's Fee - Gynaecologist	1 Visit	60.00	60.00	0.0
Eye Care	1 Test	100.00	100.00	0.0
Hospitalisation (Private Ward)	1 Day	75.00	75.00	0.0
Drug for Hypertension	1 Month supply	4.67	4.07	14.7
Drug for Diabetes	1 Month supply	14.87	12.41	19.8
Cough, Cold Preparation	125 ml.	16.09	15.21	5.8
Dental Care	1 Visit	150.00	145.83	2.9
Chest X- ray	1 Test	150.00	150.00	0.0
Drugs for Cancer	1 Month supply	22.25	14.91	49.2
Pain relievers	24 tablets per bottle	17.89	16.32	9.6
Paediatrician Fees	1 Visit	70.00	60.00	16.7
<b>TRANSPORT</b>				
Petrol - Unleaded	1 Gal.	15.89	12.29	29.3
Vehicle License (car) - not exd. 2000 lbs	1 Year	590.00	590.00	0.0
Bus Fare	1-way	4.00	3.80	5.3
Boat Fare - Bequia	1-way	25.00	25.00	0.0
Passenger airfare from S.V.G to: London	1 month	4752.25	3481.91	36.5
Diesel	1 Gal.	15.19	10.26	48.1
<b>COMMUNICATION</b>				
Telephone Service - rental of line- domestic	1 Month	23.66	23.66	0.0
Telephone - Consumption Charge	226 Units	18.08	18.08	0.0
Internet Charge	1 Month	104.00	104.00	0.0
Fixed Line domestic Rate- peak	1 Minute	0.08	0.08	0.0
Mobile to Mobile- domestic	1 Minute	0.97	0.97	0.0
<b>RECREATION AND CULTURE</b>				
Television 26 " Flat panel	Each	2019.80	2006.80	0.6
Cable TV Basic Charge	1 Month	79.33	79.33	0.0
Laptop Computer -13.3 " screen 2 GB	Each	3902.23	3876.95	0.7
Desktop Computer - 14" Monitor 3 GB	Each	2094.36	2095.60	-0.1
Car - Remote Control	Each	275.58	267.97	2.8
Dog Food (Canned)	374g Tin	4.10	3.99	2.8
Dance Admission to Night Club	Per Person	20.00	20.00	0.0
Carnival costume and Band Fees (Adult)	Each	375.00	375.00	0.0
Lawn food	5Lb.	78.49	78.36	0.2
Cat food	5.5oz tin	3.80	3.27	16.2
Dog Food (Canned)	625g tin	12.48	10.42	19.8



**Table 10.4: Average Annual Retail Price  
Selected Items 2022 Compared With 2021**

ITEMS	Unit Of Quantity	Average Retail Price EC\$		Percentage Change Over Previous Year
		2022	2021	2021
<b>EDUCATION</b>				
Pre-Primary - Private	1 Month	227.50	217.50	4.6
Primary School Fee - Private	1 Term	891.67	850.00	4.9
Secondary School Fee - Private	1 Term	116.67	100.00	16.7
Newspaper - Local	Each	1.50	1.50	0.0
Exercise Book - Primary - 24 leaves	Each	1.00	0.82	22.0
Lead Pencils	Each	0.76	0.76	0.0
Mathematics Textbook - Form 4	Each	86.33	79.51	8.6
Tuition for local evening classes	1 Subject	100.00	100.00	0.0
<b>RESTAURANTS AND HOTELS</b>				
Chicken Lunch - regular	Each	15.77	14.49	8.8
Fish Lunch - regular	Each	19.33	17.32	11.6
Fast Food - 2 Pc Chicken and Fries	Each	17.51	17.51	0.0
Beef roti	Each	13.34	12.37	7.8
School meals:				
Chicken lunch	Each	6.92	5.00	38.4
Bread and Chicken	Each	3.83	3.00	27.7
<b>MISCELLANEOUS GOODS AND SERVICES</b>				
Toilet Soap	125g	3.81	3.73	2.1
Toothpaste	130g tube	10.34	9.92	4.2
Men's Haircut	1 Visit	10.00	10.00	0.0
Women's Hairdressing ( Relaxer)	1 Visit	71.14	69.82	1.9
Disposable Diapers ( medium )	10 per Pk.	14.75	14.01	5.3
Health Insurance - Group (family)	≥3 Persons	307.00	307.00	0.0
Lady's deodorant	2.3oz bottle	17.99	15.70	14.6
Sanitary napkins	10 Pk.	11.41	10.22	11.6
Legal Expenses (Affidavit)	Fee	250.00	250.00	0.0