



CONSUMER PRICE INDEX MONTHLY STATISTICAL BULLETIN



THE STATISTICAL OFFICE

**MINISTRY OF FINANCE, ECONOMIC PLANNING
ETC.**

ST VINCENT AND THE GRENADINES

Tel: 784 457 2921, 456 1111 Ext 592/353

Fax: 784 456 2430

**Vol. 11 No.12
December 2021**

TABLE OF CONTENTS

	<u>Page No.</u>
Analysis – December 2021 prices	1
End of Year Review 2021	3
 Table No.	
1 Average Retail Price of Selected Items	6
2 Average Retail Price of Selected Items December 2021 compared With December 2020	7
3 The Consumer Price Index by main groups	11
4 The Consumer Price Index contribution to change by Groups	13
5 Monthly Items by Group	14
6 Monthly All Item Index	15
7 Monthly Rate of Inflation	16
8 Accumulated Inflation	17
9 Point-to-Point Inflation Rate	18
10 Average Annual Retail Price	19

Chart No.

1	COICOP Percentage Change for the Month of DECEMBER 2021	12
2	Monthly All Items Index	15
3	Monthly Rate of Inflation	16
4	Accumulated Inflation	17
5	Point-to-Point Inflation Rate	18

* * *

DECEMBER 2021

The consumer price index recorded an increase of 0.2 percent for the month of December 2021 compared to 0.4 percent for the month of November 2021, (*see table 3*).

During the month, the “All Items” index was recorded at 114.0 compared to 113.8 for November 2021. Five (5) groups recorded increases, namely, “Food and Non-Alcoholic Beverages” (0.7%), “Housing, Water, Electricity, Gas and Other Fuels” (0.5%), “Recreation and Culture” (0.5%), “Alcoholic Beverages, Tobacco and Narcotics” (0.1%) and “Miscellaneous Goods and Services” (0.1%). Two (2) groups recorded a decrease; “Transport” (1.7%) and “Furnishings, Household Equipment and Household Appliances” (0.1%). Five (5) groups remained unchanged; “Clothing and Footwear”, “Health”, “Communication” “Education” and “Restaurants and Hotels”.

The group index for “Food and Non-Alcoholic Beverages” grew by 0.7 percent due to an increase in the price of several food items which includes: soy sauce (25.5%), grapefruit, 22.2%), peanut butter (19.1%), tomatoes (18.9%), bacon (18.1%), cooking oil (9.6%), cucumbers (8.6%), shortening (6.8%) and green pigeon peas (6.0%).

The 0.5 percent increase in the “Housing, Electricity, Gas and Other Fuels” index was on account of an increase in the price of lumber (8.9%), galvanize nails (2.6%) and electricity (2.5%).

Similarly, the 0.5 percent growth in the index for “Recreation and Culture” was as a result of higher price for canned dog food (66.4%).

“Alcoholic Beverages, Tobacco and Narcotics” group index grew by 0.1 percent due mainly to a 7.6% increase in the price of cigarettes.

Meanwhile, the 0.1 percent increase in the group index for “Miscellaneous Goods and Services” was due mainly to a 3.1 percent increase in the price of an antibacterial soap.

The index for “Transport” declined by 1.7 percent as a result of lower prices for passenger airfare from St Vincent and the Grenadines to New York, U.S.A (41.8%) and Toronto, Canada (36.2%).

The 0.1 percent decrease in the group index for “Furnishings, Household Equipment and Household Maintenance” was on account of a decrease in the price of a disinfectant (2.5%) and washing powder (1.7%).

The point-to-point inflation rate stood at 3.4 percent for December 2021 compared to negative 1.0 percent for December 2020. The groups that accounted for the largest increases during the period were: “Housing, Water, Electricity, Gas and Other Fuels” (6.8%), Transport” (4.5%), and “Food and Non-Alcoholic Beverages” (4.2%), (*see table 3*).

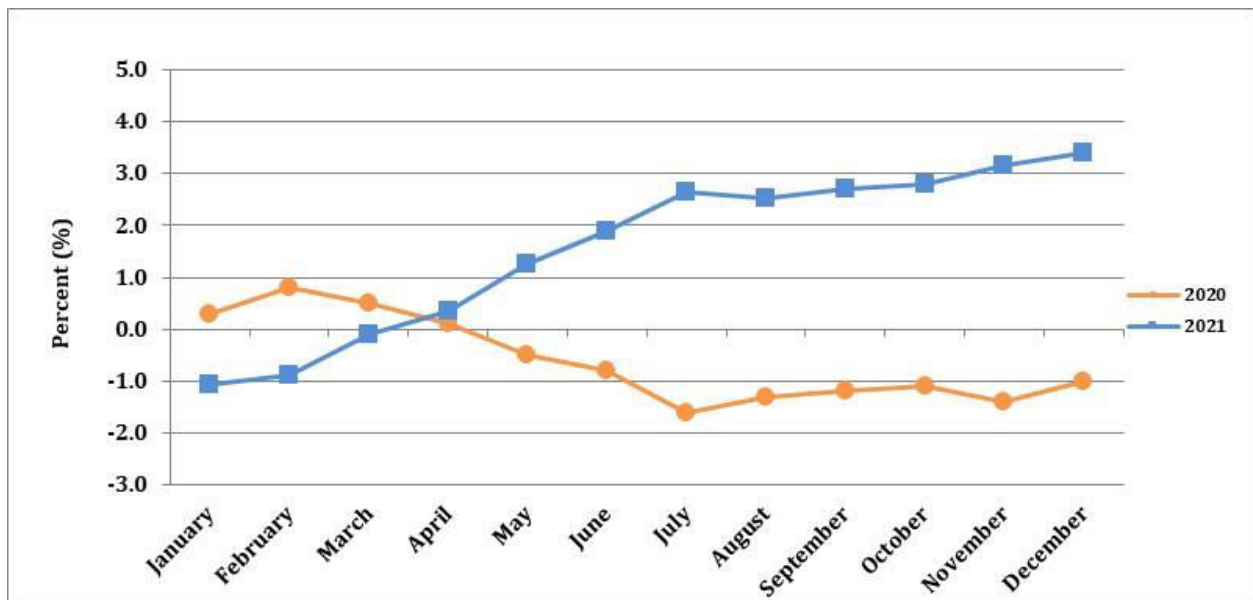
The consumer price index increased by 0.2 percent for December 2021. The point-to-point inflation rate stood at 3.4 percent due to relative price changes during the month of December 2021 compared with the same period in the previous year.

REVIEW OF 2021

A review of the Consumer Price Index for the year 2021 showed that the annual average “Point-to-Point” inflation rate was 1.6 percent compared to negative 0.6 percent for the year 2020, (see table 9). The accumulated inflation rate at the end of 2021 was recorded at 3.4 percent while that for 2020 was recorded at negative 0.1 percent, (see table 8). The average “All Items” index was recorded at 112.5 compared to 110.8 for 2020, (see table 6).

During the year the point-to-point inflation rate trended upwards. The highest rate of 3.4 percent was recorded in the month of December while the lowest rate of negative 1.1 was recorded in the month of January (see table 9).

Point to Point of Inflation, January to December 2020 – 2021



The monthly inflation rates fluctuated throughout the year. The highest rate was registered at 0.5 percent which was recorded for the months of March and April, while the lowest rate was registered at negative 0.1 percent in the month of May (see table 7).

The “All Items” index moved from 110.5 in January to 114.0 in December. The highest level of 114.0 for the year was recorded in the month of December, while the lowest of 110.5 was recorded in the month of January (*see table 6*).

Eight (8) groups recorded increases for the year; “Housing, Water, Electricity, Gas and Other Fuels” (6.8%), “Transport” (4.5%), “Food and Non-Alcoholic Beverages” (4.2%), “Health” (1.4%), “Recreation and Culture” (1.4%), “Restaurants and Hotels” (0.9%), “Furnishings, Household Equipment and Household Maintenance” (0.3%), and “Clothing and Footwear” (0.1%). Four (4) groups recorded decreases; “Communication” (1.1%), “Education” (0.5%), “Alcoholic Beverages, Tobacco and Narcotics” (0.1) and “Miscellaneous Goods and Services” (0.1%) (*see table 3*).

The 6.8 percent growth in the index for “Housing, Water, Electricity, Gas and Other Fuels” was on account of an increase in the prices of charcoal (37.5%), cooking gas (12.6%), steel rods (12.1%), french door (11.5%), galvanize sheets (11.1%), electricity (10.1%) and lumber (7.6%) (*see table 10.2*).

The “Transport” index increased by 4.5 percent due mainly to higher prices for passenger airfare from St. Vincent and the Grenadines to Toronto, Canada (28.3%), petrol (13.4%) and diesel (11.6%) (*see table 10.3*).

“Food and Non-Alcoholic Beverages” index grew by 4.2 percent due to higher prices for several items, namely: condensed milk (45.6%), ground cinnamon (30.1%), pig snout (23.0%), chicken necks (18.4%), eggs (15.7%), cornmeal (14.2%), turkey wings (9.5%), Jack fish (9.2%), sweet potatoes (8.9%), chicken backs (8.8%), vegetable oil (6.4%), oranges (5.7%) and breadfruit (5.3%) (*see table 10.1*).

The 1.4 percent increase in the “Health” index was due mainly to higher prices for drugs that are being used in the treatment of diabetes (18.1%), asthma (17.6%) and hypertension

(14.1%). There was also an increase in the price for a visit to the dermatologist (9.1%) and for pain relievers (6.2%) (*see table 10.3*).

Similarly, the 1.4 percent growth in the “Recreation and Culture” index was on account of an increase in the price of lawn food (10.7%), canned dog food (9.1%), english textbook (6.0%), mathematics textbook (5.6%) and an exercise book (5.1%) (*see table 10.3 & 10.4*).

An increase in the price of some school meals, namely; chicken lunch (19.9%), bakes and chicken (14.1%), a beef roti (3.8%) and a chicken and fries meal (2.7%), accounted for the growth of 0.9 percent in the group index for “Restaurants and Hotels” (*see table 10.4*).

The group index for “Furnishings, Household Equipment and Household Maintenance” increased by 0.3 percent due mainly to an increase in the price of a bath towel (29.4%), a pack of candles (23.5%), an electric bulb (17.2%), an aluminum pot (16.0%), disinfectant (13.0%) and a teaspoon (11.5%) (*see table 10.2*).

A reduction in the cost of mobile to mobile domestic calls by 3.0 percent was responsible for the 1.1 percent decline in the “Communication” index.

“Education” group index decreased by 0.5 percent due to a reduction in the tuition fees for foreign tertiary education in the faculty of pure and applied sciences (9.2%) and lead pencils (3.8%) (*see table 10.4*).

The group index for “Alcoholic Beverages, Narcotics and Tobacco” declined by 0.1 percent as a result of a lower price for imported beer (5.3%) and cigarettes (4.4%) (*see table 10.2*).

Meanwhile, “Miscellaneous Goods and Services” declined by 0.1 percent on account of a decrease in the price for an antibacterial soap (8.5%) and a deodorant (6.4%) (*see table 10.4*).

Table 1: Average Retail Price of Selected Items

Items	Unit of Quantity	Average Price		Change in Price	Percentage Change in Price	
		EC\$				
		December 2021	November 2021			
INCREASED						
Pasta, elbows	227g	3.31	3.14	0.17	5.4	
Bacon	12oz pkt	26.75	22.65	4.10	18.1	
Cooking oil	1 litre	15.03	13.71	1.32	9.6	
Shortening	500g tub	11.68	10.94	0.74	6.8	
Peanut butter	510g bottle	16.85	14.15	2.70	19.1	
Grapefruit	Each	1.32	1.08	0.24	22.2	
Green pigeon peas	Lb	9.50	8.96	0.54	6.0	
Tomatoes	Lb	6.16	5.18	0.98	18.9	
Cucumbers	Lb	3.04	2.80	0.24	8.6	
White Sugar	Lb	1.73	1.71	0.02	1.2	
Soy sauce	10oz bottle	6.90	5.50	1.40	25.5	
Cigarette	Pk of 20	9.21	8.56	0.65	7.6	
Electricity	140Kwh	129.89	126.67	3.22	2.5	
Lumber, 1 x 12 x 12	1 length	89.32	81.99	7.33	8.9	
Nails (galvanize)	Lb	7.14	6.96	0.18	2.6	
Dog food	375g tin	10.50	6.31	4.19	66.4	
Antibacterial soap	125g	4.29	4.16	0.13	3.1	
Petrol	1 gallon	14.48	14.17	0.31	2.2	
Diesel	1 gallon	11.75	11.47	0.28	2.4	
DECREASED						
Passenger airfare from St Vincent and the Grenadines to:						
	<i>New York, U.S.A</i>	1 month	1374.00	2360.00	-986.00	-41.8
	<i>Toronto, Canada</i>	1 month	1902.00	2981.00	-1079.00	-36.2
Pigtail, fresh	Lb	8.12	8.97	-0.85	-9.5	
Oranges	Lb	3.55	3.83	-0.28	-7.3	
Watermelon	Lb	3.61	3.80	-0.19	-5.0	
Sweetpeppers	Lb	8.23	9.22	-0.99	-10.7	
Washing powder	500g pk	5.08	5.17	-0.09	-1.7	
Disinfectant	28oz bottle	7.06	7.24	-0.18	-2.5	
Nails, wall	Lb	10.14	9.90	0.24	2.4	

**Table 2.1: Average Retail Price of Selected Items
December 2021 Compared With December 2020**

Items	Unit of Quantity	Average EC\$		Change in Price	Percentage Change in Price
		December 2021	December 2020		
FOOD AND NON-ALCOHOLIC BEVERAGES					
Beef - Fresh	Lb.	9.00	9.00	0.00	0.00
Chicken - Whole	Lb.	7.64	6.94	0.70	10.09
Chicken - Leg Quarters	Lb.	3.15	2.63	0.52	19.77
Chicken - Backs	Lb.	2.01	1.74	0.27	15.52
Chicken - Wings	Lb.	5.07	4.81	0.26	5.41
Turkey Wings	Lb.	4.15	3.32	0.83	25.00
Fish - Fresh (Deep Sea)	Lb.	9.00	9.00	0.00	0.00
Fish - Fresh (Jacks)	Lb.	5.00	5.00	0.00	0.00
Fish - Fresh (Robin)	Lb.	5.00	5.00	0.00	0.00
Chicken Franks	340 g Pk	6.68	6.40	0.28	4.37
Luncheon Meat (pork)	340 g	8.46	8.12	0.34	4.19
Codfish	Lb.	15.40	15.69	-0.29	-1.85
Cornflakes	12 oz	14.93	14.44	0.49	3.39
Pasta - Elbows	340 g	4.88	4.77	0.11	2.31
Milk - Evaporated	410g Tin	3.44	3.40	0.04	1.18
Milk - Condensed	397g Tin	3.92	3.92	0.00	0.00
Bread- Small Loaf, white	5 Pk	1.89	1.89	0.00	0.00
Bread - Large Sliced Pan Loaf (white)	Each	4.19	4.19	0.00	0.00
Eggs	Doz	10.54	9.28	1.26	13.58
Orange Juice	19 oz Tin	9.61	9.32	0.29	3.11
Sugar - Brown (loose)	Lb.	1.73	1.69	0.04	2.37
Sugar - White (loose)	Lb.	2.20	1.79	0.41	22.91
Flour - Loose	Lb.	1.36	1.35	0.01	0.74
Flour - Packaged (white)	2 kg	6.84	6.85	-0.01	-0.15
Flour - Packaged (wholewheat)	2 kg	7.18	7.18	0.00	0.00
Rice - Loose	Lb.	1.91	1.85	0.06	3.24
Rice - Packaged	2Kg	10.90	10.74	0.16	1.49
Bananas (ripe)	Lb.	1.50	1.43	0.07	4.90
Breadfruit	Lb.	2.58	2.51	0.07	2.79
Eddoes	Lb.	3.08	3.17	-0.09	-2.84
Dasheens	Lb.	1.98	2.72	-0.74	-27.21
Sweet Potatoes	Lb.	2.93	2.98	-0.05	-1.68
Oranges	Each	1.01	0.88	0.13	14.77
Tomatoes	Lb.	6.16	7.70	-1.54	-20.00
Cooking Margarine	445g Tub	10.26	9.70	0.56	5.77
Vegetable Oil	Litre	15.39	12.43	2.96	23.81
Powdered Chocolate	300g Pk	10.70	10.59	0.11	1.04
Hairoun Fruit Cocktail (not cold)	280 ml Bottle	2.92	2.90	0.02	0.69
Vitamalt	310 ml Bottle	5.85	5.84	0.01	0.17

**Table 2.2: Average Retail Price of Selected Items
December 2021 Compared With December 2020**

Items	Unit of Quantity	Average EC\$		Change in Price	Percentage Change in Price
		December 2021	December 2020		
ALCOHOLIC BEVERAGES, TOBACCO & NARCOTICS					
Rum - Local (White)	750 ml Bot.	33.01	32.85	0.16	0.49
Beer - Local	280 ml Bot.	5.09	5.05	0.04	0.79
Cigarettes	Pkt. (10)	3.55	3.49	0.06	1.72
Table wine (local)	26 oz Bot.	24.01	23.88	0.13	0.54
CLOTHING & FOOTWEAR					
Textile material - Terelyne	Yd.	35.00	47.95	-12.95	-27.01
Textile material - Linen	Yd.	17.95	17.95	0.00	0.00
Men's Shirts - Long Sleeve	Each	69.92	69.95	-0.03	-0.04
Men's Jeans (long) - size 30	Pair	49.95	49.95	0.00	0.00
Men's Shoes -Formal	Pair	78.31	78.78	-0.47	-0.60
Women's Shoes - Formal	Pair	88.10	88.63	-0.53	-0.60
Women's 2Pc Skirtsuit (polyester) large	Each	102.48	102.48	0.00	0.00
Women's Blouse (cotton/Spandex)	Each	29.95	29.95	0.00	0.00
HOUSING, WATER, ELECTRICITY GAS AND OTHER FUELS					
Rent :					
Unfurnished House - 2 Bedrooms	Month	567.86	567.86	0.00	0.00
Unfurnished House - 3 Bedrooms	Month	612.50	612.50	0.00	0.00
Furnished Apartment - 2 Bedrooms	Month	791.67	791.67	0.00	0.00
Cement - Portland (grey)	94 Lbs	22.92	20.66	2.26	10.94
Galvanise Sheets 10 ft.	Length	107.25	96.68	10.57	10.93
Oil Paint	Gallon	134.83	134.43	0.40	0.30
Lumber - Dressed Treated Yellow Pine (1x12x12)	Length	89.32	74.68	14.64	19.60
Water - Consumption Charge	5000 Gallons	37.50	37.50	0.00	0.00
Kerosene	1 Gallon	6.61	6.61	0.00	0.00
Charcoal	Sack	60.00	40.00	20.00	50.00
Cooking Gas	20 Lb. Cyl.	43.90	33.85	10.05	29.69
Electricity Consumption Charge	140 KWH	129.89	96.70	33.19	34.32
FURNISHING, HOUSEHOLD EQUIPMENT AND HOUSEHOLD MAINTENANCE					
Bed - Cherry 54"x75"	Each	1,167.61	1,167.61	0.00	0.00
Double size sheets - coloured/cotton	Each	105.11	105.11	0.00	0.00
Frying Pan - 12" - non-stick	Each	53.11	55.98	-2.87	-5.13
Laundry Soap	Each	1.18	1.21	-0.03	-2.48
Electrical Bulb - 60W	Each	8.07	6.30	1.77	28.10

**Table 2.3: Average Retail Price of Selected Items
December 2021 Compared With December 2020**

Items	Unit of Quantity	Average EC\$		Change in Price	Percentage Change in Price
		December 2020	December 2020		
HEALTH					
Doctor's Fee - Gynaecologist	Visit	60.00	60.00	0.00	0.00
Eye Care	Test	100.00	100.00	0.00	0.00
Hospitalisation (Private Ward)	Day	75.00	75.00	0.00	0.00
Drugs for Hypertension	Month supply	3.82	3.62	0.20	5.52
Drug for Diabetes	Month supply	13.99	10.84	3.15	29.06
Cough, Cold Preparation	125 ml.	15.35	15.18	0.17	1.12
Dental Care	Visit	145.83	145.83	0.00	0.00
Chest X- ray	Test	150.00	150.00	0.00	0.00
TRANSPORT					
Petrol - Unleaded	Gallon	14.48	10.50	3.98	37.90
Vehicle License (car) - not exd. 2000 lbs	Year	590.00	590.00	0.00	0.00
Bus Fare - Mesopotamia	One Way	3.00	3.00	0.00	0.00
Boat Fare - Bequia	One Way	25.00	25.00	0.00	0.00
COMMUNICATION					
Telephone Service - rental of line- domestic	Month	23.66	23.66	0.00	0.00
Telephone - Consumption Charge	226 Units	18.08	18.08	0.00	0.00
Internet Charge	Month	104.00	104.00	0.00	0.00
Fixed Line Domestic Rate - peak	Minute	0.08	0.08	0.00	0.00
Mobile to Mobile - domestic	Minute	0.93	1.00	-0.07	-7.00
RECREATION AND CULTURE					
Television 26 " Flat panel	Each	2,019.80	2,014.27	5.53	0.27
Cable TV Basic Charge	Month	79.33	79.33	0.00	0.00
Laptop Computer -13.3 " screen 2 GB	Each	3,902.23	3,891.36	10.87	0.28
Desktop Computer - 14" Monitor 3 GB	Each	2,109.18	2,103.40	5.78	0.27
Remote Control Car	Each	267.97	267.97	0.00	0.00
Dog Food (Canned)	374 g Tin	4.08	3.95	0.13	3.29
Dance Admission to Night Club	Per Person	20.00	20.00	0.00	0.00
Carnival costume and Band Fees (Adult)	Each	375.00	375.00	0.00	0.00

**Table 2.4: Average Retail Price of Selected Items
December 2021 Compared With December 2020**

Items	Unit of Quantity	Average EC\$		Change in Price	Percentage Change in Price
		December 2021	December 2020		
EDUCATION					
Pre-Primary - Private	Month	217.50	217.50	0.00	0.00
Primary School Fee - Private	Term	850.00	850.00	0.00	0.00
Secondary School Fee - Private	Term	100.00	100.00	0.00	0.00
Newspaper - Local	Each	1.50	1.50	0.00	0.00
Exercise Book - Primary - 24 leaves	Each	0.85	0.78	0.07	8.97
Lead Pencils	Each	0.75	0.87	-0.12	-13.79
Mathematics Textbook - Form 4	Each	86.55	74.92	11.63	15.52
Tuition for local evening classes	Per Subject	100.00	100.00	0.00	0.00
RESTAURANTS AND HOTELS					
Chicken Lunch - regular	Each	14.49	14.49	0.00	0.00
Fish Lunch - regular	Each	17.32	17.32	0.00	0.00
Fast Food - 2 Pc Chicken and Fries	Each	18.75	17.05	1.70	9.97
MISCELLANEOUS GOODS AND SERVICES					
Toilet Soap	125g	3.73	3.76	-0.03	-0.80
Toothpaste	130g Tube	9.99	9.98	0.01	0.10
Men's Haircut	Visit	10.00	10.00	0.00	0.00
Women's Hairdressing (Relaxer)	Visit	69.82	69.82	0.00	0.00
Disposable Diapers (medium)	10 per Pk.	14.05	14.06	-0.01	-0.07
Health Insurance - Group (family)	≥3 Persons	307.00	307.00	0.00	0.00
Legal Expenses (Affidavit)	Fee	250.00	250.00	0.00	0.00

Table 3: The Consumer Price Index by Main Groups
January 2010 = 100

	Groups	Weight	November 2021	December 2021	December 2020	Percentage Change Over Previous:	
						Month November	Year December
01.	Food and Non-Alcoholic Beverages	21.91	124.4	125.3	120.3	0.7	4.2
02.	Alcoholic Beverages, Tobacco & Narcotics	3.87	126.5	126.6	126.7	0.1	-0.1
03.	Clothing and Footwear	3.22	104.6	104.6	104.5	0.0	0.1
04.	Housing, Water, Electricity, Gas and other Fuels	30.06	104.3	104.8	98.1	0.5	6.8
05.	Furnishings, Household Equipment and Household Maintenance	6.59	113.2	113.1	112.8	-0.1	0.3
06.	Health	1.79	115.8	115.8	114.2	0.0	1.4
07.	Transport	11.84	125.9	123.8	118.5	-1.7	4.5
08.	Communication	9.41	112.0	112.0	113.3	0.0	-1.1
09.	Recreation and Culture	3.81	109.2	109.8	108.3	0.5	1.4
10.	Education	1.32	109.1	109.1	109.6	0.0	-0.5
11.	Restaurants and Hotels	1.87	115.2	115.2	114.2	0.0	0.9
12.	Miscellaneous Goods and Services	4.31	106.3	106.4	106.5	0.1	-0.1
	ALL ITEMS	100.00	113.8	114.0	110.2	0.2	3.4

Chart 1. COICOP Groups Percentage Change for December 2021

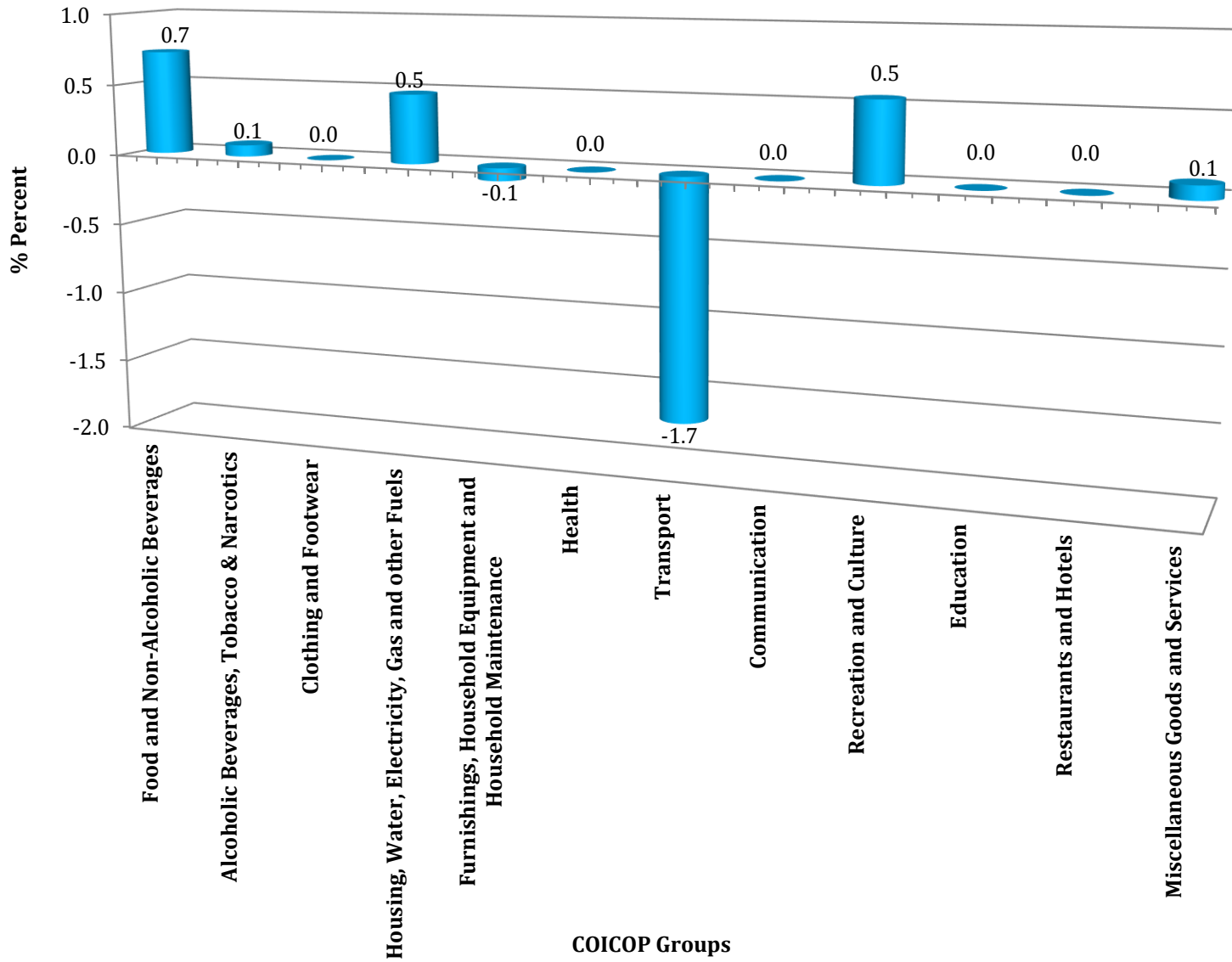


Table 4: The Consumer Price Index by Main Groups
January 2010 = 100
Contribution to Change

	Groups	Weight	November 2021	December 2021	Percentage Change	Cost Weight		Change in Cost Weight	% Contribution to Change
						November 2021	December 2021		
1.	Food and Non-Alcoholic Beverages	21.91	124.4	125.3	0.7	2,725.60	2,745.32	19.7	98.6
2.	Alcoholic Beverages, Tobacco & Narcotics	3.87	126.5	126.6	0.1	489.56	489.94	0.4	1.9
3.	Clothing and Footwear	3.22	104.6	104.6	0.0	336.81	336.81	0.0	0.0
4.	Housing, Water, Electricity, Gas and other Fuels	30.06	104.3	104.8	0.5	3,135.26	3,150.29	15.0	75.1
5.	Furnishings, Household Equipment and Household Maintenance	6.59	113.2	113.1	-0.1	745.99	745.33	-0.7	-3.3
6.	Health	1.79	115.8	115.8	0.0	207.28	207.28	0.0	0.0
7.	Transport	11.84	125.9	123.8	-1.7	1,490.66	1,465.79	-24.9	-124.3
8.	Communication	9.41	112.0	112.0	0.0	1,053.92	1,053.92	0.0	0.0
9.	Recreation and Culture	3.81	109.2	109.8	0.5	416.05	418.34	2.3	11.4
10.	Education	1.32	109.1	109.1	0.0	144.01	144.01	0.0	0.0
11.	Hotels and Restaurants	1.87	115.2	115.2	0.0	215.42	215.42	0.0	0.0
12.	Miscellaneous Goods and Services	4.31	106.3	106.4	0.1	458.15	458.58	0.4	2.2
	ALL ITEMS	100.00	113.8	114.0	0.2	11,380.00	11,400.00	20.0	100.0

Table 5: Monthly Index - 2021
January 2010 = 100

Groups	All Items	Food & Non-Alcoholic Beverages	Alcoholic Beverages Tobacco & Narcotics	Clothing & Footwear	Housing Water Electricity Gas and Fuels	Furnishings Household Equipment & Household Maintenance	Health	Transport	Communi-cation	Recreation & Culture	Education	Hotels & Restaurants	Miscell-aneous Goods and Services
WEIGHT	100.00	21.91	3.87	3.22	30.06	6.59	1.79	11.84	9.41	3.81	1.32	1.87	4.31
MONTH													
January	110.5	119.7	126.7	104.5	99.6	112.6	114.2	118.3	113.3	108.7	109.6	114.0	106.4
February	110.8	120.0	126.9	104.5	99.9	113.3	114.6	118.8	113.3	108.3	109.6	114.0	106.4
March	111.4	120.2	126.8	104.5	100.8	113.4	114.6	121.0	113.3	108.3	109.6	114.0	106.4
April	112.0	120.5	126.8	104.7	102.4	113.9	114.6	121.0	113.3	108.3	109.6	114.0	106.4
May	111.9	120.5	126.9	104.7	101.9	113.8	115.2	121.3	113.3	108.4	109.6	114.0	106.3
June	112.8	121.3	126.9	104.7	103.8	113.6	115.4	122.7	113.3	108.6	109.6	114.0	106.1
July	112.9	121.5	126.1	104.9	103.3	113.2	116.1	124.6	113.3	108.6	109.6	114.0	106.2
August	113.1	122.0	126.1	104.6	103.8	113.1	115.6	126.0	112.0	108.6	109.6	114.0	106.2
September	113.2	122.6	126.1	104.6	103.2	113.1	115.6	126.8	112.0	109.0	109.1	115.2	106.2
October	113.4	122.7	126.6	104.6	103.5	113.3	115.6	127.3	112.3	109.2	109.1	115.2	106.1
November	113.8	124.4	126.5	104.6	104.3	113.2	115.8	125.9	112.0	109.2	109.1	115.2	106.3
December	114.0	125.3	126.6	104.6	104.8	113.1	115.8	123.8	112.0	109.8	109.1	115.2	106.4

Table 6: Monthly All Items Index, January to December 2016 - 2021

Months	2016	2017	2018	2019	2020	2021
January	104.7	106.7	109.6	111.4	111.7	110.5
February	104.6	106.4	109.4	110.9	111.8	110.8
March	104.8	106.3	109.6	111.0	111.5	111.4
April	104.5	107.5	110.4	111.5	111.6	112.0
May	105.3	108.0	110.5	111.0	110.5	111.9
June	106.4	108.3	110.6	111.6	110.7	112.8
July	106.3	108.5	110.7	111.8	110.0	112.9
August	106.3	108.4	110.8	111.8	110.3	113.1
September	106.4	108.4	110.9	111.5	110.2	113.2
October	106.1	108.5	111.0	111.5	110.3	113.4
November	106.3	108.8	110.9	111.9	110.3	113.8
December	106.1	109.3	110.8	111.3	110.2	114.0
Average	105.7	107.9	110.4	111.4	110.8	112.5

Chart 2: Monthly All Items Index, January to December 2020 - 2021

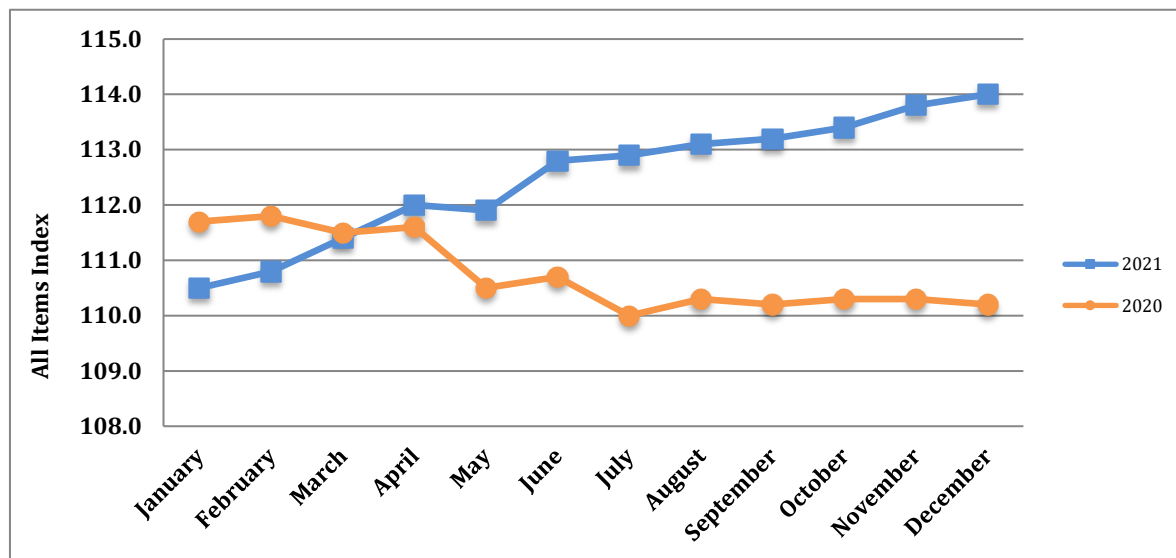


Table 7: Monthly Rate of Inflation, January to December 2016 - 2021

Months	2016	2017	2018	2019	2020	2021
January	-0.4	0.6	0.3	0.5	0.4	0.3
February	-0.1	-0.3	-0.2	0.1	0.4	0.3
March	0.2	-0.1	0.2	0.2	0.2	0.5
April	-0.3	1.1	0.7	0.6	0.3	0.5
May	0.8	0.5	0.1	0.2	-0.7	-0.1
June	1.0	0.3	0.1	0.7	-0.5	0.8
July	-0.1	0.2	0.1	0.9	-1.2	0.1
August	0.0	-0.1	0.1	0.9	-0.9	0.2
September	0.1	0.0	0.1	0.6	-1.0	0.1
October	-0.3	0.1	0.1	0.6	-0.9	0.2
November	0.2	0.3	-0.1	1.0	-0.9	0.4
December	-0.2	0.5	-0.1	0.5	-1.0	0.2

Chart 3: Monthly Rate of Inflation, January to December 2020 - 2021

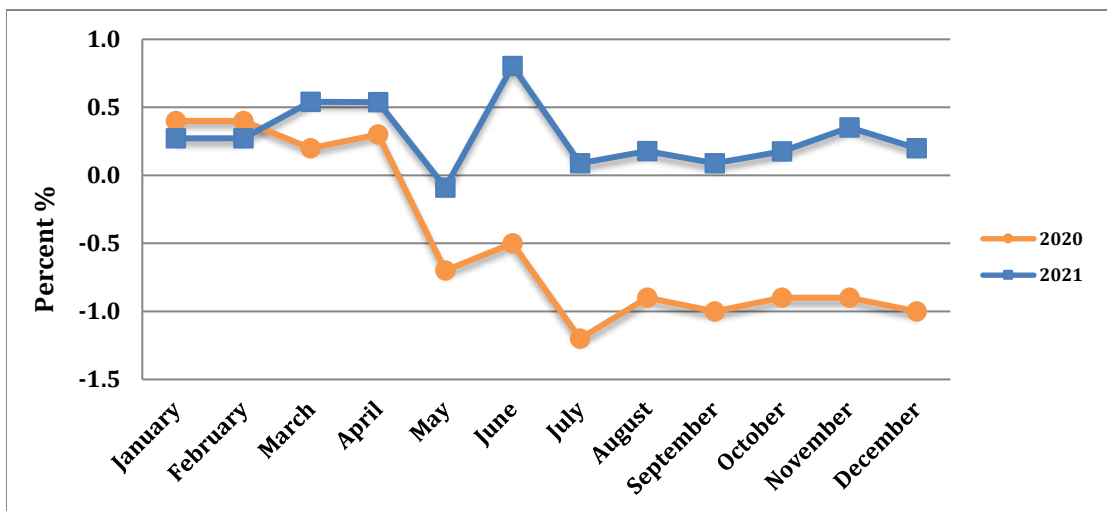


Table 8: Accumulated Inflation, January to December 2016 - 2020

Months	2016	2017	2018	2019	2020	2021
January	-0.4	0.6	0.3	0.5	0.4	0.3
February	-0.5	0.3	0.1	-0.4	0.1	0.5
March	-0.3	0.2	0.3	0.1	-0.3	1.1
April	-0.6	1.3	1.0	0.5	0.1	1.6
May	0.2	1.8	1.1	-0.4	-0.1	1.5
June	1.2	2.1	1.2	0.5	0.3	2.3
July	1.1	2.2	1.3	0.2	-0.6	2.4
August	1.1	2.2	1.4	0.0	0.3	2.6
September	1.2	2.2	1.5	-0.3	-0.1	2.7
October	1.0	2.2	1.5	0.0	0.1	2.9
November	1.1	2.5	1.5	0.4	0.0	3.2
December	1.0	3.0	1.4	-0.5	-0.1	3.4

Chart 4: Accumulated Inflation, January to December 2020 - 2021

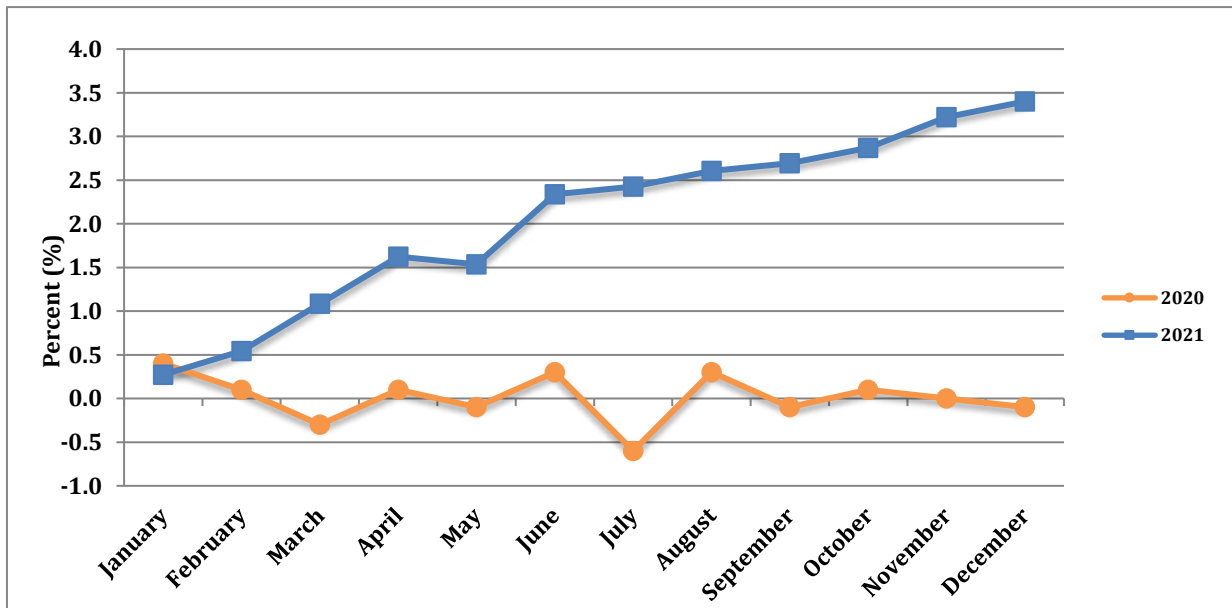
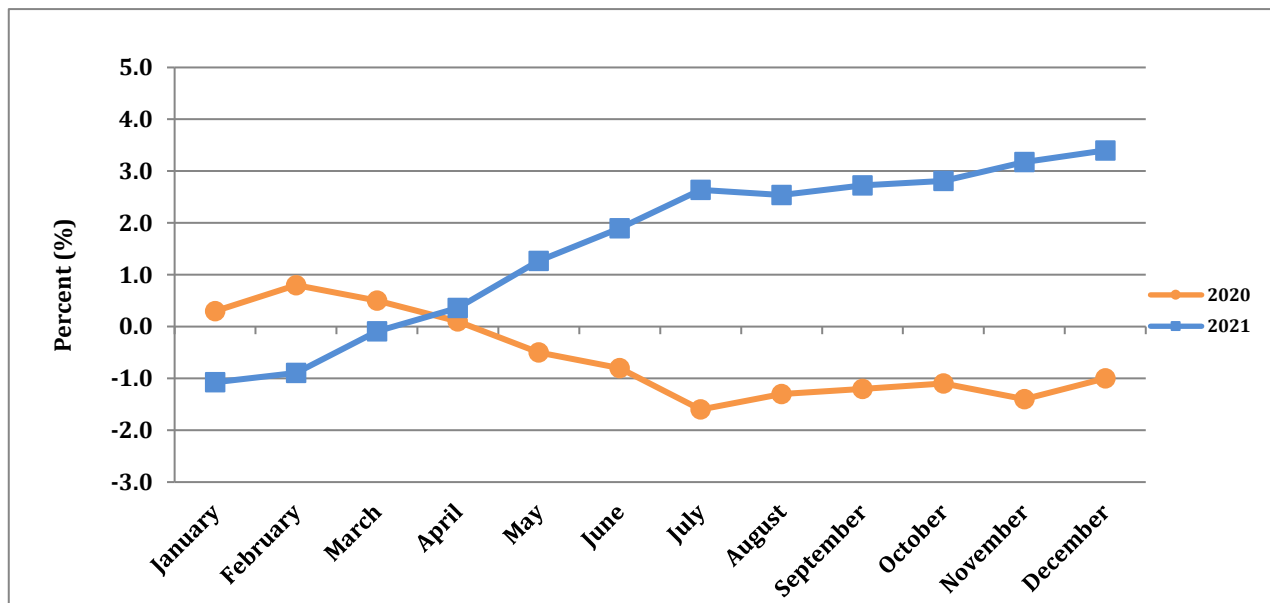


Table 9: Point to Point Rate of Inflation, January to December 2016 - 2020

Months	2016	2017	2018	2019	2020	2021
January	-2.6	1.9	2.7	1.6	0.3	-1.1
February	-1.3	1.7	2.8	1.4	0.8	-0.9
March	-0.7	1.4	3.1	1.3	0.5	-0.1
April	-1.0	2.9	2.7	1.0	0.1	0.4
May	-0.1	2.6	2.3	0.5	-0.5	1.3
June	0.9	1.8	2.1	0.9	-0.8	1.9
July	0.0	2.1	2.0	1.0	-1.6	2.6
August	0.0	2.0	2.2	0.9	-1.3	2.5
September	0.6	1.9	2.3	0.5	-1.2	2.7
October	0.7	2.3	2.3	0.5	-1.1	2.8
November	0.9	2.4	1.9	0.9	-1.4	3.2
December	1.0	3.0	1.4	0.5	-1.0	3.4
Average	-0.1	2.2	2.3	0.9	-0.6	1.6

Chart 5: Point to Point Rate of Inflation, January to December 2020 - 2021



**Table 10.1: Average Annual Retail Price
Selected Items 2021 Compared With 2020**

Items	Unit Of Quantity	Average Retail Price EC\$		Percentage Change Over Previous Year
		2021	2020	2020
FOOD AND NON-ALCOHOLIC BEVERAGES				
Beef - Fresh	Lb.	9.00	8.92	0.9
Chicken - Whole	Lb.	7.30	6.90	5.8
Chicken - Leg Quarters	Lb.	3.00	2.83	6.0
Chicken - Backs	Lb.	1.86	1.71	8.8
Chicken - Wings	Lb.	4.95	4.80	3.1
Turkey Wings	Lb.	3.68	3.36	9.5
Fish - Fresh (Deep Sea)	Lb.	8.83	9.00	-1.9
Fish - Fresh (Jacks)	Lb.	5.00	4.58	9.2
Fish - Fresh (Robins)	Lb.	5.00	4.82	3.7
Chicken Franks	340 g Pk	6.46	6.29	2.7
Luncheon Meat (pork)	340 g	8.25	8.23	0.2
Codfish	Lb.	14.73	15.84	-7.0
Cornflakes	12 oz	14.93	14.28	4.6
Pasta - Elbows	340 g	4.76	4.68	1.7
Milk - Evaporated	410g Tin	3.42	3.27	4.6
Milk - Condensed	397g Tin	3.92	3.97	-1.3
Bread- Small Loaf, white	5 Pk	1.89	1.89	0.0
Bread - Large Sliced Pan Loaf (white)	Each	4.19	4.19	0.0
Eggs	Doz	9.75	8.43	15.7
Orange Juice	19 oz Tin	9.37	9.25	1.3
Sugar - Brown (loose)	Lb.	1.69	1.64	3.0
Sugar - White (loose)	Lb.	1.85	1.79	3.4
Flour - Loose	Lb.	1.36	1.35	0.7
Flour - Packaged (white)	2 kg	6.85	6.84	0.1
Flour - Packaged (wholewheat)	2 kg	7.18	7.18	0.0
Rice - Loose	Lb.	1.86	1.88	-1.1
Rice - Package	2 kg	10.82	10.81	0.1
Bananas	Lb.	1.48	1.43	3.5
Breadfruit	Lb.	2.58	2.45	5.3
Eddoes	Lb.	3.09	3.04	1.6
Dasheens	Lb.	2.20	2.19	0.5
Sweet Potatoes	Lb.	2.93	2.69	8.9
Oranges	Each	0.92	0.87	5.7
Tomatoes	Lb.	5.40	6.20	-12.9
Cooking Margarine	445g Tub	9.78	9.54	2.5
Vegetable Oil	1 Litre	13.22	12.42	6.4
Powdered Chocolate	300g Pk	10.64	10.60	0.4
Hairoun Fruit Cocktail (not cold)	280 ml Bottle	2.90	2.90	0.0
Vitamalt	310 ml Bottle	5.83	5.80	0.5
Ground cinnamon	3.37oz bottle	9.20	7.07	30.1
Chicken necks	Lb.	2.36	1.59	48.4
Condensed milk	395g tin	7.95	5.46	45.6
Pig snout	Lb.	11.13	9.05	23.0
Cornmeal	Lb.	2.74	2.40	14.2

**Table 10.2: Average Annual Retail Price
Selected Items 2021 Compared With 2020**

Items	Unit Of Quantity	Average Retail Price EC\$		Percentage Change Over Previous Year
		2021	2020	2020
ALCOHOLIC BEVERAGES, TOBACCO & NARCOTICS				
Rum - Local (White)	750 ml Bottle	32.95	32.65	0.9
Beer - Local	280ml Bottle	5.08	5.07	0.2
Cigarettes	Pkt. (10)	3.50	3.66	-4.4
Table wine (Local)	26 oz Bottle	23.96	23.63	1.4
Imported beer	295ml tin	5.05	5.33	-5.3
CLOTHING & FOOTWEAR				
Textile material - Terelyne	Yd.	42.55	47.95	-11.3
Textile material - Linen	Yd.	17.95	17.95	0.0
Men's Shirts - Long Sleeve	Each	69.93	69.95	0.0
Men's Jeans (long) - size 30	Each	49.95	49.95	0.0
Men's Shoes -Formal	Pair	78.67	79.07	-0.5
Women's Shoes - Formal	Pair	88.51	88.96	-0.5
Women's 2Pc Skirtsuit (polyester) large	Each	102.48	102.48	0.0
Women's Blouse (cotton/Spandex)	Each	29.95	29.95	0.0
Women's Dress, casual, medium	Each	40.00	40.00	0.0
Men's boxers	Each	5.00	5.74	-12.9
Textile material, polyester, 60"	1 yard	24.45	24.20	1.0
HOUSING, WATER, ELECTRICITY, GAS AND OTHER FUELS				
Rent :				
Unfurnished House -2 Bedroom	1Month	567.86	567.86	0.0
Unfurnished House -3 Bedroom	1Month	612.50	612.50	0.0
Furnished Apartment- 2 Bedroom	1Month	791.67	791.67	0.0
Cement - Portland (grey)	94 Lbs	21.03	20.66	1.8
Galvanise Sheets 10 ft.	1 Length	107.37	96.68	11.1
Oil Paint	1 Gal.	134.73	134.43	0.2
Lumber -Dressed Treated Yellow Pine (1x12x12)	1 Length	81.29	75.53	7.6
Water - Consumption Charge	5000 Gals.	37.50	37.50	0.0
Kerosene	1 Gal.	6.61	6.61	0.0
Charcoal	1 Sack	55.00	40.00	37.5
Cooking Gas	20 Lb. Cyl.	39.05	34.67	12.6
Electricity Consumption Charge	140 KWH	118.96	108.00	10.1
Steel rods, 1/2"	1 Length	21.84	19.48	12.1
French door, 36"	Each	421.68	378.23	11.5
FURNISHING, HOUSEHOLD EQUIPMENT AND HOUSEHOLD MAINTENANCE				
Bed - Cherry 54"x75"	Each	1167.61	1168.71	-0.1
Double size sheets - coloured/cotton	Each	105.11	105.11	0.0
Bath towel	Each	31.80	24.57	29.4
Kitchen knife	Each	7.79	7.38	5.6
Teaspoon	Each	4.95	4.44	11.5
Aluminum pot, 10"	Each	104.60	90.20	16.0
Candles	4 pk	6.20	5.02	23.5
Electrical Bulb - 60W	Each	7.44	6.35	17.2
Disinfectant	30oz bottle	5.22	4.62	13.0
Dishwashing liquid	450ml	7.32	7.68	-4.7
Washing powder	400g	4.90	4.89	0.2
Pillow case	1 pair	14.83	14.47	2.5

**Table 10.3: Average Annual Retail Price
Selected Items 2021 Compared With 2020**

Items	Unit Of Quantity	Average Retail Price EC\$		Percentage Change Over Previous Year 2020
		2021	2020	
HEALTH				
Doctor's Fee - Gynaecologist	1 Visit	60.00	60.00	0.0
Eye Care	1 Test	100.00	100.00	0.0
Hospitalisation (Private Ward)	1 Day	75.00	75.00	0.0
Drug for Hypertension	1 Month supply	4.07	3.55	14.6
Drug for Diabetes	1 Month supply	12.41	10.51	18.1
Cough, Cold Preparation	125 ml.	15.21	15.19	0.1
Dental Care	1 Visit	145.83	142.92	2.0
Chest X- ray	1 Test	150.00	150.00	0.0
Drugs for asthma	1 Month supply	7.50	6.38	17.6
Pain relievers	24 tablets per bottle	16.32	15.37	6.2
Dermatologist fee	1 Visit	50.00	45.83	9.1
TRANSPORT				
Petrol - Unleaded	1 Gal.	12.48	11.01	13.4
Vehicle License (car) - not exd. 2000 lbs	1 Year	590.00	590.00	0.0
Bus Fare - Mesopotamia	1-way	3.00	3.00	0.0
Boat Fare - Bequia	1-way	25.00	25.00	0.0
Passenger airfare from S.V.G to:				
Toronto, Canada	1 month	3480.89	2713.58	28.3
Diesel	1 Gal.	12.29	11.01	11.6
COMMUNICATION				
Telephone Service - rental of line- domestic	1 Month	23.66	23.66	0.0
Telephone - Consumption Charge	226 Units	18.08	18.08	0.0
Internet Charge	1 Month	104.00	104.00	0.0
Fixed Line domestic Rate- peak	1 Minute	0.08	0.08	0.0
Mobile to Mobile- domestic	1 Minute	0.97	1.00	-3.0
RECREATION AND CULTURE				
Television 26 " Flat panel	Each	2006.80	2011.96	-0.3
Cable TV Basic Charge	1 Month	79.33	79.33	0.0
Laptop Computer -13.3 " screen 2 GB	Each	3876.95	3886.90	-0.3
Desktop Computer - 14" Monitor 3 GB	Each	2095.60	2100.99	-0.3
Car - Remote Control	Each	267.97	263.39	1.7
Dog Food (Canned)	374g Tin	3.99	3.89	2.6
Dance Admission to Night Club	Per Person	20.00	20.00	0.0
Carnival costume and Band Fees (Adult)	Each	375.00	375.00	0.0
Lawn food	5Lb.	78.36	70.77	10.7
Cat food	5.5oz tin	3.27	3.12	4.8
Dog Food (Canned)	625g tin	10.42	9.55	9.1

**Table 10.4: Average Annual Retail Price
Selected Items 2021 Compared With 2020**

ITEMS	Unit Of Quantity	Average Retail Price EC\$		Percentage Change Over Previous Year
		2021	2020	2020
EDUCATION				
Pre-Primary - Private	1 Month	217.50	217.50	0.0
Primary School Fee - Private	1 Term	850.00	850.00	0.0
Secondary School Fee - Private	1 Term	100.00	100.00	0.0
Newspaper - Local	Each	1.50	1.50	0.0
Exercise Book - Primary - 24 leaves	Each	0.82	0.78	5.1
Lead Pencils	Each	0.76	0.79	-3.8
Mathematics Textbook - Form 4	Each	79.51	75.28	5.6
Tuition for local evening classes	1 Subject	100.00	100.00	0.0
Education - Faculty of Pure & Applied Sciences	1 Semester	5,415.97	5,964.83	-9.2
RESTAURANTS AND HOTELS				
Chicken Lunch - regular	Each	14.49	14.49	0.0
Fish Lunch - regular	Each	17.32	17.02	1.8
Fast Food - 2 Pc Chicken and Fries	Each	17.51	17.05	2.7
Beef roti	Each	12.37	11.92	3.8
School meals:				
Chicken lunch	Each	5.00	4.17	19.9
Bakes and Chicken	Each	3.00	2.63	14.1
MISCELLANEOUS GOODS AND SERVICES				
Toilet Soap	125g	3.73	3.63	2.8
Toothpaste	130g tube	9.92	9.79	1.3
Men's Haircut	1 Visit	10.00	10.00	0.0
Women's Hairdressing (Relaxer)	1 Visit	69.82	69.07	1.1
Disposable Diapers (medium)	10 per Pk.	14.01	13.90	0.8
Health Insurance - Group (family)	≥3 Persons	307.00	307.00	0.0
Lady's deodorant	2.3oz bottle	15.70	16.77	-6.4
Antibacterial soap	125g	4.43	4.84	-8.5
Legal Expenses (Affidavit)	Fee	250.00	250.00	0.0