



CONSUMER PRICE INDEX MONTHLY STATISTICAL BULLETIN



THE STATISTICAL OFFICE

**MINISTRY OF FINANCE, ECONOMIC PLANNING
ETC.**

ST VINCENT AND THE GRENADINES

Tel: 784 457 2921, 456 1111 Ext 592/353

Fax: 784 456 2430,

**Vol. 10 No.12
December 2020**

TABLE OF CONTENTS

	<u>Page No.</u>
Analysis – December 2020 prices	1
End of Year Review 2020	3
 Table No.	
1 Average Retail Price of Selected Items	6
2 Average Retail Price of Selected Items December 2020 compared With December 2019	7
3 The Consumer Price Index by main groups	11
4 The Consumer Price Index contribution to change by Groups	13
5 Monthly Items by Group	14
6 Monthly All Item Index	15
7 Monthly Rate of Inflation	16
8 Accumulated Inflation	17
9 Point-to-Point Inflation Rate	18
10 Average Annual Retail Price	19

Chart No.

1	COICOP Percentage Change for the Month of DECEMBER 2020	12
2	Monthly All Items Index	15
3	Monthly Rate of Inflation	16
4	Accumulated Inflation	17
5	Point-to-Point Inflation Rate	18

* * *

DECEMBER 2020

The consumer price index recorded a decrease of 0.1 percent for the month of December 2020, after being unchanged for the month of November, 2020, *(See table 3)*.

During the month of December, 2020, the “All Items” index was recorded at 110.2 compared to 110.3 for the month of November, 2020. *(See table 3)*. Two (2) groups recorded decreases during the period, “Housing, Water, Electricity, Gas and Other Fuels” (-0.6%) and “Alcoholic Beverages, Tobacco and Narcotics” (-0.1%). Five (5) groups recorded increases during the month, “Furnishings, Household Equipment and Household Maintenance” (0.3%), “Food and Non-Alcoholic Beverages” (0.2%), “Health” (0.2%), “Transport” (0.2%) and “Miscellaneous Goods and Services” (0.1%).

The Group index for “Housing, Water, Electricity, Gas and Other Fuels” declined by 0.6 percent due mainly to a 3.2 percent decrease in the price of electricity. This is as a result of a reduction in the fuel surcharge rate from 21.33 cents per kilowatt hour for the month of November, 2020 to 19.07 cents per kilowatt hour for the month of December, 2020.

The 0.1 percent decrease in the “Alcoholic Beverages, Tobacco and Narcotics” index is due mainly to a lower price for stout (1.1%) and table wine (0.3%).

The index for “Furnishings, Household Equipment and Household Maintenance” grew by 0.3 percent. This is due mainly to higher prices for air freshener (5.3%), dishwashing liquid (4.4%) and washing powder (2.8%).

“Food and Non-Alcoholic Beverages” increased by 0.2 percent due to an increase in the price of a numbers of items, namely; condensed milk (51.7%), cucumbers (14.9%), curry powder (11.2%), pork (6.2%), lettuce (5.7%), onions (4.1%), and christophene (3.6%).

A similar increase of 0.2 percent was recorded for the groups “Health” and “Transport”. A 9.9 percent increase in the price of laxatives is mainly responsible for the change in the “Health” index while a 3.6 percent upward movement in the price for passenger airfare from St Vincent and the Grenadines to London, United Kingdom accounts for the change in the “Transport” index.

The “Miscellaneous Good and Services” index grew by 0.1 percent due mainly to an increase of 2.7 percent in the price of a toilet soap.

Meanwhile, the point-to-point inflation rate stood at negative 0.1 percent for the month of December, 2020 compared to 1.4 percent for the month of November 2020. The groups that accounted for the largest decreases were “Transport” (5.0%), “Housing, Water, Electricity, Gas and Other Fuels” (3.5%) and “Education” (2.4%), (See table 3).

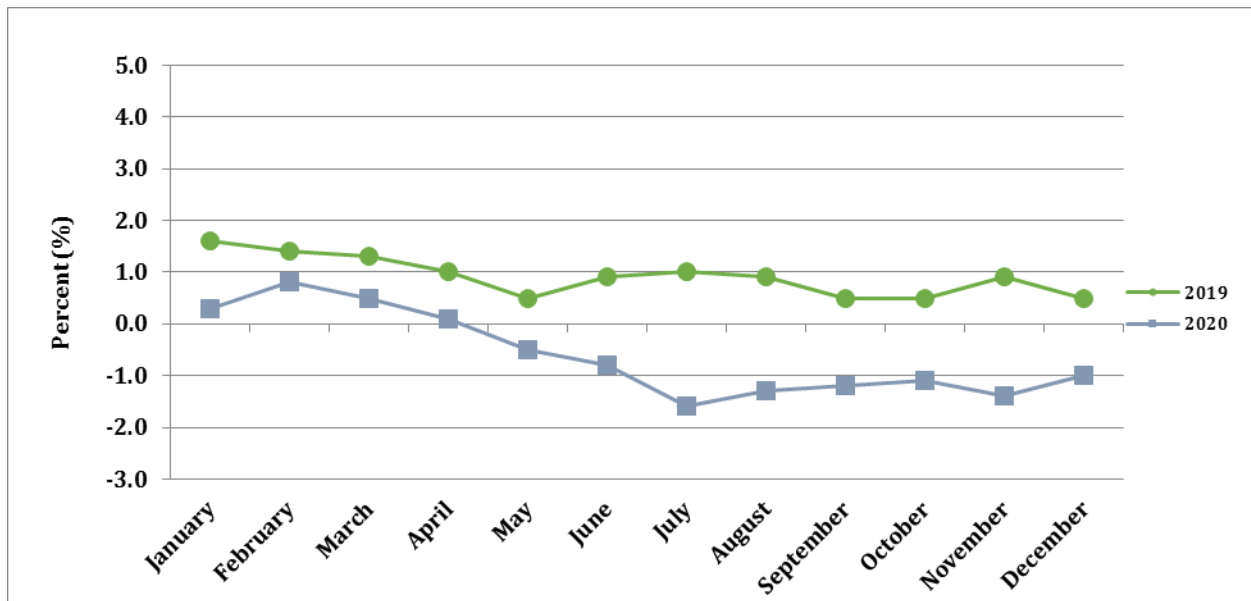
The consumer price index declined by 0.1 percent for the month of December, 2020. The point-to-point inflation rate stood at negative 1.0 percent due to relative price changes during the month of December 2020 compared with the same period in the previous year.

REVIEW OF 2020

A review of the Consumer Price Index for the year 2020 showed that the annual average “Point-to-Point” inflation rate was negative 0.6 percent compared to 0.9 percent for the year 2019. The accumulated inflation rate at the end of 2020 was recorded at negative 0.1 percent while that for 2019 was recorded at 0.5 percent, (see table 8) The average “All Items” index was recorded at 110.8 compared to 111.4 for 2019, (see table 6).

During the year the point-to-point inflation rate recorded positive values for the first four months while the rest of the year recorded negative values. The highest inflation rate of 0.8 percent was recorded in the month of February while the lowest of negative 1.6, which was recorded for the month of July, (see table 9).

Point to Point of Inflation, January to December 2019 - 2020



The monthly inflation rates moved in a negative direction for most of the year. The highest rate was registered at 0.4 percent which was recorded for the months of January and February, while the lowest rate was registered at negative 1.2 percent in the month of July, (see table 7).

The average “All Items” index moved from 111.7 in January to 110.2 in December. The highest level for the year was recorded in the month of February (111.8) while the lowest was 110.0 which was recorded for in the month of July, *(see table 6)*.

Six (6) groups recorded increases for the year, “Health” (4.4%), “Restaurants and Hotels” (3.3%), “Food and Non-Alcoholic Beverages” (2.6%), “Miscellaneous Goods and Services” (1.2%), “Recreation and Culture” (0.8%) and “Clothing and Footwear” (0.3%). Five (5) groups recorded decreases, “Transport” (5.0%), “Housing, Water, Electricity, Gas and Other Fuels” (3.5%), “Education” (2.4%), “Furnishing, Household Equipment and Household Maintenance” (0.7%) and “Clothing and Footwear” (0.5%). The index for “Communication” remained unchanged, *(see table 3)*.

The 4.4 percent growth in the index for “Health” is due primarily to increase prices for dental services (7.6%) and a 1.4% increase in the price for drugs that are used to treat hypertension, *(see table 10.3)*.

The “Restaurants and Hotel” group index increased by 3.3 percent due mainly to increase prices for school meals, in particular, chicken lunch (39.0%), bakes and chicken (19.6%) and pizza (15.8%). Other price increases was noted for fish lunch at restaurant (9.8%) and accommodation at overseas university (9.2%), *(see table 10.4)*.

“Food and Non-Alcoholic Beverages” grew by 2.6 percent due to higher prices for several items, namely; tomatoes ground cinnamon (87.0%), yeast (54.0%), (29.2%), mutton (20.3%), dasheens (16.5%), Chive 16.2%), sweet peppers (16.1%), sweet potatoes (15.5%), beef (11.5%), eddoes (10.1%), and fish (jacks) (7.3%), *(see table 10.1)*.

The group index for “Miscellaneous Goods and Services” increased by 1.2 percent due mainly to a 94.3 percent increase in the price of health insurance for a single person, 4.6 percent in the price of toothpaste, 4.5 percent for disposable diapers and 3.4 percent for toilet soap, *(see table 10.4)*.

“Recreation and Culture” increased by 0.8 percent due mainly to higher prices for pet food - dog food (21.8%) and cat food (9.1%) - and lawn food (9.4%), (*see table 10.3*). “Alcoholic Beverages, Tobacco and Narcotics” also showed upward movements of 0.6 due mainly to an increase in prices for table wine (8.7%) and local white rum (4.0%), (*see table 10.2*).

The 5.0 percent decline in the “Transport” index is due mainly to a reduction in passenger airfare from St. Vincent and the Grenadines to several destinations which included New York (29.6%), Barbados (23.7%) and Trinidad and Tobago (20.0%) along with an 11.5% decrease in the price of petrol.

The group index for “Housing, Water, Electricity, Gas and Other Fuels” recorded a downward movement of 3.5 percent mainly as a result of a 13.6 percent decline in the price of electricity and 8.3 percent decrease in the price of cooking gas. Meanwhile the decline of 2.4 percent in the “Education” index is due mainly to reduced prices for lead pencils (11.2%).

The “Furnishings, Household Equipment and Household Maintenance” group index decreased by 0.7 percent due mainly to lower prices for disinfectant (8.2%), washing powder (3.4%), pillow cases (3.2%) and dish washing liquid (2.8%).

“Clothing and Footwear” declined by 0.5 percent due mainly to decreased prices for men’s boxers 27.8 percent, women’s casual dress (3.5%) and textile material (polyester) for men’s pants (3.0%)

Table 1: Average Retail Price of Selected Items

Items	Unit of Quantity	Average Price		Change in Price	Percentage Change in Price
		EC\$			
		December 2020	November 2020		
INCREASED					
Pork, frozen	Lb	10.95	10.31	0.64	6.2
Condensed milk	395g tin	7.95	5.24	2.71	51.7
Lettuce	Head	6.32	5.98	0.34	5.7
Christophene	Lb	4.83	4.66	0.17	3.6
Cucumbers	Lb	3.55	3.09	0.46	14.9
Onions	Lb	2.79	2.68	0.11	4.1
Curry powder	50g Pk.	3.38	3.04	0.34	11.2
Brandy	750ml	21.05	19.95	1.10	5.5
Wall nails	Lb	10.71	9.44	1.27	13.5
Washing powder	400g Pk.	4.83	4.70	0.13	2.8
Washing Liquid	450ml bottle	7.56	7.24	0.32	4.4
Air refreshner	9oz. Bottle	8.21	7.80	0.41	5.3
Laxatives	60 tabs per Pk.	10.11	9.20	0.91	9.9
Pet food	625g tin	10.20	9.65	0.55	5.7
Passenger airfare from St Vincent and the Grenadines to: London, United Kingdom	1 month	3150.00	3040.00	110.00	3.6
Toilet soap	125g	3.79	3.69	0.10	2.7
DECREASED					
Peppermint tea	Pk. of 20	5.95	7.60	-1.65	-21.7
Eddoes	Lb	3.17	3.56	-0.39	-11.0
Table wine	26oz. Bottle	23.88	23.94	-0.06	-0.3
Stout	275ml bottle	6.02	6.09	-0.07	-1.1
Electricity	140KWh	96.70	99.86	-3.16	-3.2
Drugs for hypertension	1mth's supply	4.24	4.90	-0.66	-13.5

**Table 2.1: Average Retail Price of Selected Items
December 2020 Compared With December 2019**

Items	Unit of Quantity	Average EC\$		Change in Price	Percentage Change in Price
		December 2020	December 2019		
FOOD AND NON-ALCOHOLIC BEVERAGES					
Beef - Fresh	Lb.	9.00	8.00	1.00	12.50
Chicken - Whole	Lb.	6.94	6.85	0.09	1.31
Chicken - Leg Quarters	Lb.	2.63	2.82	-0.19	-6.74
Chicken - Backs	Lb.	1.74	1.71	0.03	1.75
Chicken - Wings	Lb.	4.81	4.78	0.03	0.63
Turkey Wings	Lb.	3.32	3.42	-0.10	-2.92
Fish - Fresh (Deep Sea)	Lb.	9.00	9.00	0.00	0.00
Fish - Fresh (Jacks)	Lb.	5.00	4.00	1.00	25.00
Fish - Fresh (Robin)	Lb.	5.00	5.00	0.00	0.00
Chicken Franks	340 g Pk	6.40	6.20	0.20	3.23
Luncheon Meat (pork)	340 g	8.12	8.13	-0.01	-0.12
Codfish	Lb.	15.69	15.47	0.22	1.42
Cornflakes	12 oz	14.44	13.84	0.60	4.34
Pasta - Elbows	340 g	4.77	4.67	0.10	2.14
Milk - Evaporated	410g Tin	3.40	3.18	0.22	6.92
Milk - Condensed	397g Tin	3.92	4.00	-0.08	-2.00
Bread- Small Loaf, white	5 Pk	1.89	1.89	0.00	0.00
Bread - Large Sliced Pan Loaf (white)	Each	4.19	4.19	0.00	0.00
Eggs	Doz	9.28	8.44	0.84	9.95
Orange Juice	19 oz Tin	9.32	9.09	0.23	2.53
Sugar - Brown (loose)	Lb.	1.69	1.62	0.07	4.32
Sugar - White (loose)	Lb.	1.79	1.78	0.01	0.56
Flour - Loose	Lb.	1.35	1.35	0.00	0.00
Flour - Packaged (white)	2 kg	6.85	6.84	0.01	0.15
Flour - Packaged (wholewheat)	2 kg	7.18	7.18	0.00	0.00
Rice - Loose	Lb.	1.85	1.89	-0.04	-2.12
Rice - Packaged	2Kg	10.74	10.83	-0.09	-0.83
Bananas (ripe)	Lb.	1.43	1.43	0.00	0.00
Breadfruit	Lb.	2.51	2.35	0.16	6.81
Eddoes	Lb.	3.17	2.72	0.45	16.54
Dasheens	Lb.	2.72	1.88	0.84	44.68
Sweet Potatoes	Lb.	2.98	2.43	0.55	22.63
Oranges	Each	0.88	0.85	0.03	3.53
Tomatoes	Lb.	7.70	6.17	1.53	24.80
Cooking Margarine	445g Tub	9.70	9.17	0.53	5.78
Vegetable Oil	Litre	12.43	12.41	0.02	0.16
Powdered Chocolate	300g Pk	10.59	10.88	-0.29	-2.67
Hairoun Fruit Cocktail (not cold)	280 ml Bottle	2.90	2.86	0.04	1.40
Vitamalt	310 ml Bottle	5.84	5.78	0.06	1.04

**Table 2.2: Average Retail Price of Selected Items
December 2020 Compared With December 2019**

Items	Unit of Quantity	Average EC\$		Change in Price	Percentage Change in Price
		December 2020	December 2019		
ALCOHOLIC BEVERAGES, TOBACCO & NARCOTICS					
Rum - Local (White)	750 ml Bot.	32.85	32.34	0.51	1.58
Beer - Local	280 ml Bot.	5.05	5.09	-0.04	-0.79
Cigarettes	Pkt. (10)	3.49	4.01	-0.52	-12.97
Table wine (local)	26 oz Bot.	23.88	23.04	0.84	3.65
CLOTHING & FOOTWEAR					
Textile material - Terelyne	Yd.	47.95	47.95	0.00	0.00
Textile material - Linen	Yd.	17.95	17.95	0.00	0.00
Men's Shirts - Long Sleeve	Each	69.95	69.95	0.00	0.00
Men's Jeans (long) - size 30	Pair	49.95	49.95	0.00	0.00
Men's Shoes -Formal	Pair	78.78	79.85	-1.07	-1.34
Women's Shoes - Formal	Pair	88.63	89.83	-1.20	-1.34
Women's 2Pc Skirtsuit (polyester) large	Each	102.48	102.48	0.00	0.00
Women's Blouse (cotton/Spandex)	Each	29.95	29.95	0.00	0.00
HOUSING, WATER, ELECTRICITY GAS AND OTHER FUELS					
Rent :					
Unfurnished House - 2 Bedrooms	Month	567.86	567.86	0.00	0.00
Unfurnished House - 3 Bedrooms	Month	612.50	612.50	0.00	0.00
Furnished Apartment - 2 Bedrooms	Month	791.67	791.67	0.00	0.00
Cement - Portland (grey)	94 Lbs	20.66	20.66	0.00	0.00
Galvanise Sheets 10 ft.	Length	96.68	96.68	0.00	0.00
Oil Paint	Gallon	134.43	134.43	0.00	0.00
Lumber - Dressed Treated Yellow Pine (1x12x12)	Length	74.68	72.03	2.65	3.68
Water - Consumption Charge	5000 Gallons	37.50	37.50	0.00	0.00
Kerosene	1 Gallon	6.61	6.61	0.00	0.00
Charcoal	Sack	40.00	40.00	0.00	0.00
Cooking Gas	20 Lb. Cyl.	33.85	35.49	-1.64	-4.62
Electricity Consumption Charge	140 KWH	96.70	117.17	-20.47	-17.47
FURNISHING, HOUSEHOLD EQUIPMENT AND HOUSEHOLD MAINTENANCE					
Bed - Cherry 54"x75"	Each	1,167.61	1,181.73	-14.12	-1.19
Double size sheets - coloured/cotton	Each	105.11	105.05	0.06	0.06
Frying Pan - 12" - non-stick	Each	55.98	55.98	0.00	0.00
Laundry Soap	Each	1.21	1.25	-0.04	-3.20
Electrical Bulb - 60W	Each	6.30	6.40	-0.10	-1.56

**Table 2.3: Average Retail Price of Selected Items
December 2020 Compared With December 2019**

Items	Unit of Quantity	Average EC\$		Change in Price	Percentage Change in Price
		December 2020	December 2019		
HEALTH					
Doctor's Fee - Gynaecologist	Visit	60.00	60.00	0.00	0.00
Eye Care	Test	100.00	100.00	0.00	0.00
Hospitalisation (Private Ward)	Day	75.00	75.00	0.00	0.00
Drugs for Hypertension	Month supply	3.62	3.50	0.12	3.43
Drug for Diabetes	Month supply	10.84	10.49	0.35	3.34
Cough, Cold Preparation	125 ml.	15.18	15.18	0.00	0.00
Dental Care	Visit	145.83	134.17	11.66	8.69
Chest X- ray	Test	150.00	150.00	0.00	0.00
TRANSPORT					
Petrol - Unleaded	Gallon	10.50	12.97	-2.47	-19.04
Vehicle License (car) - not exd. 2000 lbs	Year	590.00	590.00	0.00	0.00
Bus Fare - Mesopotamia	One Way	3.00	3.00	0.00	0.00
Boat Fare - Bequia	One Way	25.00	25.00	0.00	0.00
COMMUNICATION					
Telephone Service - rental of line- domestic	Month	23.66	23.66	0.00	0.00
Telephone - Consumption Charge	226 Units	18.08	18.08	0.00	0.00
Internet Charge	Month	104.00	104.00	0.00	0.00
Fixed Line Domestic Rate - peak	Minute	0.08	0.08	0.00	0.00
Mobile to Mobile - domestic	Minute	1.00	1.00	0.00	0.00
RECREATION AND CULTURE					
Television 26 " Flat panel	Each	2,014.27	2,004.58	9.69	0.48
Cable TV Basic Charge	Month	79.33	79.33	0.00	0.00
Laptop Computer -13.3 " screen 2 GB	Each	3,891.36	3,872.65	18.71	0.48
Desktop Computer - 14" Monitor 3 GB	Each	2,103.40	2,093.29	10.11	0.48
Remote Control Car	Each	267.97	258.45	9.52	3.68
Dog Food (Canned)	374 g Tin	3.95	3.84	0.11	2.86
Dance Admission to Night Club	Per Person	20.00	20.00	0.00	0.00
Carnival costume and Band Fees (Adult)	Each	375.00	375.00	0.00	0.00

**Table 2.4: Average Retail Price of Selected Items
December 2020 Compared With December 2019**

Items	Unit of Quantity	Average EC\$		Change in Price	Percentage Change in Price
		December 2020	December 2019		
EDUCATION					
Pre-Primary - Private	Month	217.50	217.50	0.00	0.00
Primary School Fee - Private	Term	850.00	850.00	0.00	0.00
Secondary School Fee - Private	Term	100.00	100.00	0.00	0.00
Newspaper - Local	Each	1.50	1.50	0.00	0.00
Exercise Book - Primary - 24 leaves	Each	0.78	0.78	0.00	0.00
Lead Pencils	Each	0.87	0.75	0.12	16.00
Mathematics Textbook - Form 4	Each	74.92	75.12	-0.20	-0.27
Tuition for local evening classes	Per Subject	100.00	100.00	0.00	0.00
RESTAURANTS AND HOTELS					
Chicken Lunch - regular	Each	14.49	14.49	0.00	0.00
Fish Lunch - regular	Each	17.32	15.49	1.83	11.81
Fast Food - 2 Pc Chicken and Fries	Each	17.05	17.05	0.00	0.00
MISCELLANEOUS GOODS AND SERVICES					
Toilet Soap	125g	3.76	3.49	0.27	7.74
Toothpaste	130g Tube	9.98	9.60	0.38	3.96
Men's Haircut	Visit	10.00	10.00	0.00	0.00
Women's Hairdressing (Relaxer)	Visit	69.82	68.82	1.00	1.45
Disposable Diapers (medium)	10 per Pk.	14.06	13.65	0.41	3.00
Health Insurance - Group (family)	≥3 Persons	307.00	307.00	0.00	0.00
Legal Expenses (Affidavit)	Fee	250.00	250.00	0.00	0.00

Table 3: The Consumer Price Index by Main Groups
January 2010 = 100

	Groups	Weight	November 2020	December 2020	December 2019	Percentage Change Over Previous:	
						Month November	Year December
01.	Food and Non-Alcoholic Beverages	21.91	120.0	120.3	117.2	0.2	2.6
02.	Alcoholic Beverages, Tobacco & Narcotics	3.87	126.8	126.7	126.3	-0.1	0.3
03.	Clothing and Footwear	3.22	104.5	104.5	105.0	0.0	-0.5
04.	Housing, Water, Electricity, Gas and other Fuels	30.06	98.7	98.1	101.7	-0.6	-3.5
05.	Furnishings, Household Equipment and Household Maintenance	6.59	112.5	112.8	113.6	0.3	-0.7
06.	Health	1.79	114.0	114.2	109.4	0.2	4.4
07.	Transport	11.84	118.3	118.5	124.7	0.2	-5.0
08.	Communication	9.41	113.3	113.3	113.3	0.0	0.0
09.	Recreation and Culture	3.81	108.3	108.3	107.4	0.0	0.8
10.	Education	1.32	109.6	109.6	112.3	0.0	-2.4
11.	Restaurants and Hotels	1.87	114.2	114.2	110.6	0.0	3.3
12.	Miscellaneous Goods and Services	4.31	106.4	106.5	105.2	0.1	1.2
	ALL ITEMS	100.00	110.3	110.2	111.3	-0.1	-1.0

Chart 1. COICOP Groups Percentage Change for December 2020

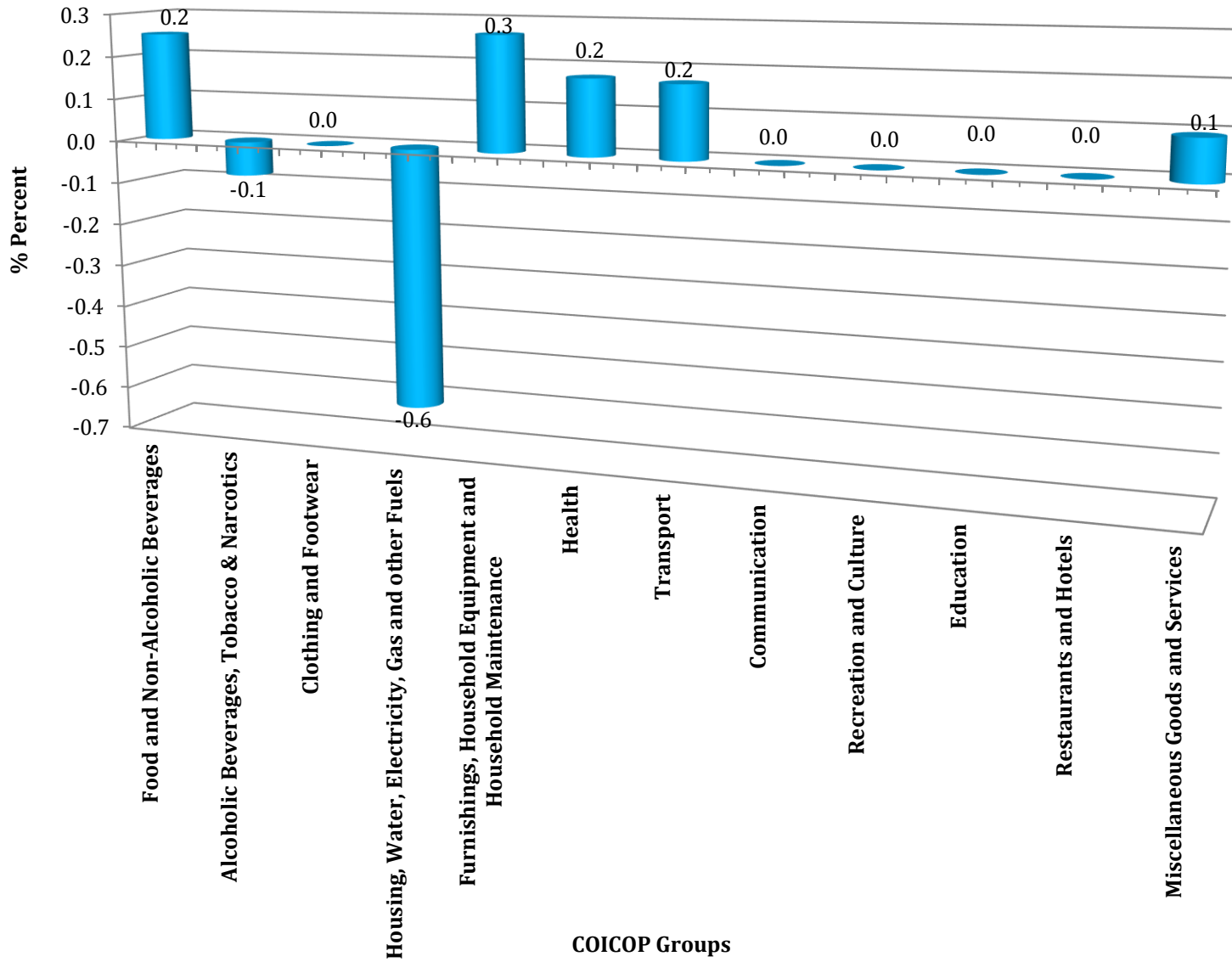


Table 4: The Consumer Price Index by Main Groups
January 2010 = 100
Contribution to Change

	Groups	Weight	November 2020	December 2020	Percentage Change	Cost Weight		Change in Cost Weight	% Contribution to Change
						November 2020	December 2020		
1.	Food and Non-Alcoholic Beverages	21.91	120.0	120.3	0.3	2,629.20	2,635.77	6.6	-65.7
2.	Alcoholic Beverages, Tobacco & Narcotics	3.87	126.8	126.7	-0.1	490.72	490.33	-0.4	3.9
3.	Clothing and Footwear	3.22	104.5	104.5	0.0	336.49	336.49	0.0	0.0
4.	Housing, Water, Electricity, Gas and other Fuels	30.06	98.7	98.1	-0.6	2,966.92	2,948.89	-18.0	180.4
5.	Furnishings, Household Equipment and Household Maintenance	6.59	112.5	112.8	0.3	741.38	743.35	2.0	-19.8
6.	Health	1.79	114.0	114.2	0.2	204.06	204.42	0.4	-3.6
7.	Transport	11.84	118.3	118.5	0.2	1,400.67	1,403.04	2.4	-23.7
8.	Communication	9.41	113.3	113.3	0.0	1,066.15	1,066.15	0.0	0.0
9.	Recreation and Culture	3.81	108.3	108.3	0.0	412.62	412.62	0.0	0.0
10.	Education	1.32	109.6	109.6	0.0	144.67	144.67	0.0	0.0
11.	Hotels and Restaurants	1.87	114.2	114.2	0.0	213.55	213.55	0.0	0.0
12.	Miscellaneous Goods and Services	4.31	106.4	106.5	0.1	458.58	459.02	0.4	-4.3
	ALL ITEMS	100.00	110.3	110.2	-0.1	11,030.00	11,020.00	-10.0	100.0

Table 5: Monthly Index - 2020
January 2010 = 100

Groups	All Items	Food & Non-Alcoholic Beverages	Alcoholic Beverages Tobacco & Narcotics	Clothing & Footwear	Housing Water Electricity Gas and Fuels	Furnishings Household Equipment & Household Maintenance	Health	Transport	Communi-cation	Recreation & Culture	Education	Hotels & Restaurants	Miscell-aneous Goods and Services
WEIGHT	100.00	21.91	3.87	3.22	30.06	6.59	1.79	11.84	9.41	3.81	1.32	1.87	4.31
MONTH													
January	111.7	117.7	126.2	105.0	102.9	113.6	109.4	123.7	113.3	107.4	112.3	110.2	105.6
February	111.8	118.0	126.3	105.0	102.5	113.6	109.6	125.4	113.3	107.4	112.3	110.2	106.1
March	111.5	118.5	126.3	105.0	102.1	113.3	109.6	122.9	113.3	107.5	112.3	111.6	106.1
April	111.6	118.1	126.3	104.5	102.4	113.7	110.6	123.3	113.3	107.9	112.3	111.6	106.0
May	110.5	118.4	126.2	104.5	100.2	113.6	110.6	119.1	113.3	107.9	112.3	111.6	106.0
June	110.7	118.8	126.5	104.5	100.2	113.6	112.7	119.1	113.3	107.9	112.3	113.8	106.0
July	110.0	119.0	126.7	104.5	98.7	113.6	113.0	117.2	113.3	107.9	112.3	113.8	106.2
August	110.3	119.7	126.6	104.5	99.1	113.3	113.0	117.9	113.3	108.2	112.3	113.8	106.1
September	110.2	119.3	126.6	104.5	98.6	113.4	113.0	119.3	113.3	108.4	109.6	113.9	106.2
October	110.3	119.8	126.8	104.5	99.3	112.5	114.0	116.8	113.3	108.4	109.6	114.2	106.4
November	110.3	120.0	126.8	104.5	98.7	112.5	114.0	118.3	113.3	108.3	109.6	114.2	106.4
December	110.2	120.3	126.7	104.5	98.1	112.8	114.2	118.5	113.3	108.3	109.6	114.2	106.5

Table 6: Monthly All Items Index, January to December 2015 - 2020

Months	2015	2016	2017	2018	2019	2020
January	107.5	104.7	106.7	109.6	111.4	111.7
February	106.0	104.6	106.4	109.4	110.9	111.8
March	105.5	104.8	106.3	109.6	111.0	111.5
April	105.6	104.5	107.5	110.4	111.5	111.6
May	105.4	105.3	108.0	110.5	111.0	110.5
June	105.4	106.4	108.3	110.6	111.6	110.7
July	106.3	106.3	108.5	110.7	111.8	110.0
August	106.3	106.3	108.4	110.8	111.8	110.3
September	105.8	106.4	108.4	110.9	111.5	110.2
October	105.4	106.1	108.5	111.0	111.5	110.3
November	105.4	106.3	108.8	110.9	111.9	110.3
December	105.1	106.1	109.3	110.8	111.3	110.2
Average	105.8	105.7	107.9	110.4	111.4	110.8

Chart 2: Monthly All Items Index, January to December 2019 - 2020

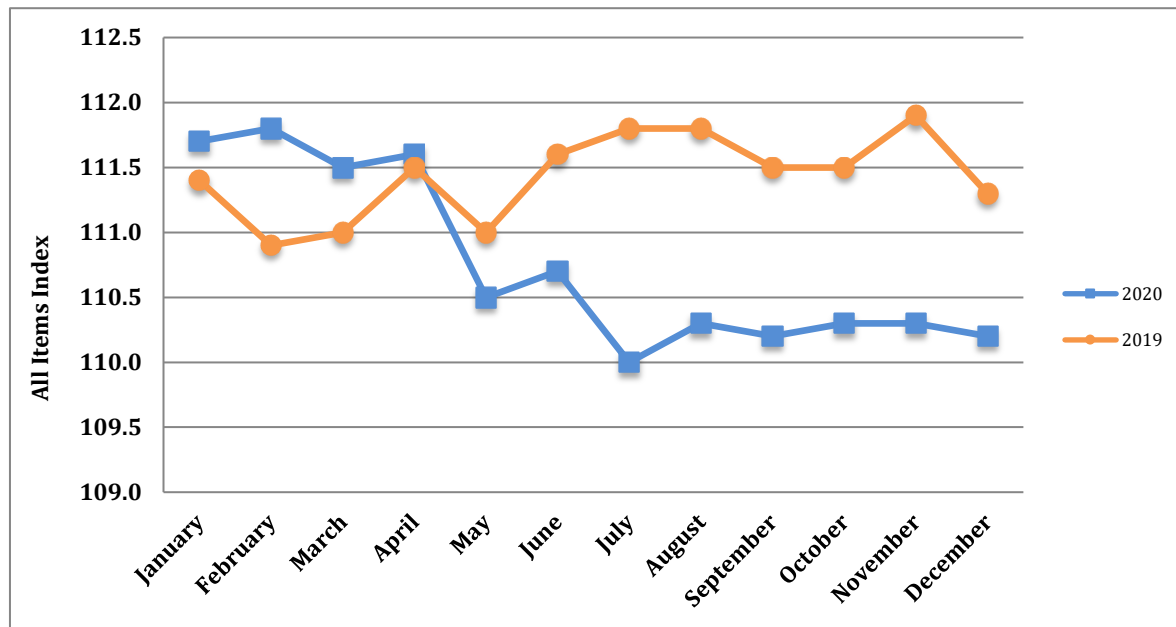


Table 7: Monthly Rate of Inflation, January to December 2015 - 2020

Months	2015	2016	2017	2018	2019	2020
January	0.2	-0.4	0.6	0.3	0.5	0.4
February	-1.4	-0.1	-0.3	-0.2	0.1	0.4
March	-0.5	0.2	-0.1	0.2	0.2	0.2
April	0.1	-0.3	1.1	0.7	0.6	0.3
May	-0.2	0.8	0.5	0.1	0.2	-0.7
June	0.0	1.0	0.3	0.1	0.7	-0.5
July	0.8	-0.1	0.2	0.1	0.9	-1.2
August	0.0	0.0	-0.1	0.1	0.9	-0.9
September	-0.5	0.1	0.0	0.1	0.6	-1.0
October	-0.4	-0.3	0.1	0.1	0.6	-0.9
November	0.0	0.2	0.3	-0.1	1.0	-0.9
December	-0.3	-0.2	0.5	-0.1	0.5	-1.0

Chart 3: Monthly Rate of Inflation, January to December 2019 - 2020

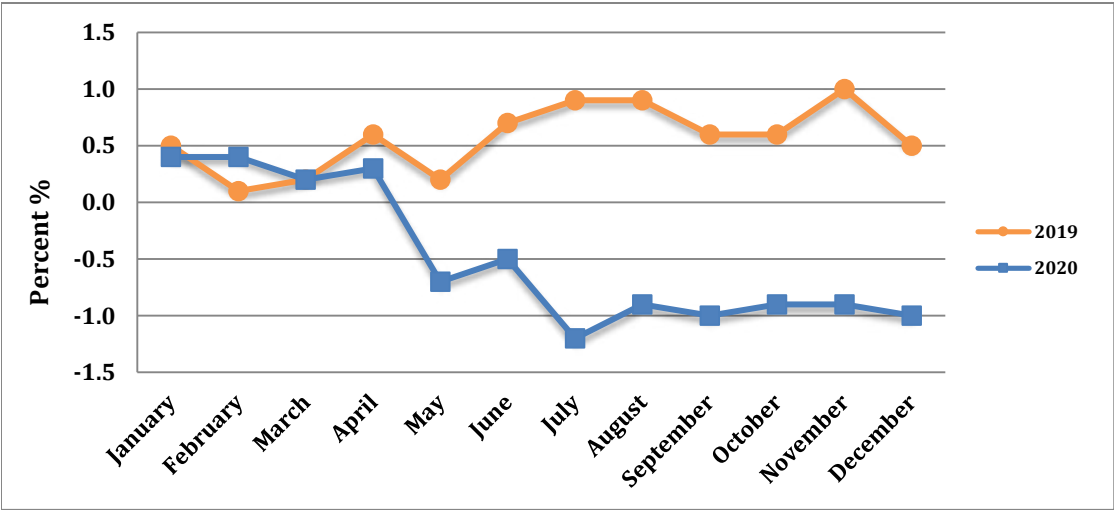


Table 8: Accumulated Inflation, January to December 2015 - 2020

Months	2015	2016	2017	2018	2019	2020
January	0.2	-0.4	0.6	0.3	0.5	0.4
February	-1.2	-0.5	0.3	0.1	-0.4	0.1
March	-1.7	-0.3	0.2	0.3	0.1	-0.3
April	-1.6	-0.6	1.3	1.0	0.5	0.1
May	-1.8	0.2	1.8	1.1	-0.4	-0.1
June	-1.8	1.2	2.1	1.2	0.5	0.3
July	-0.9	1.1	2.2	1.3	0.2	-0.6
August	-0.9	1.1	2.2	1.4	0.0	0.3
September	-1.4	1.2	2.2	1.5	-0.3	-0.1
October	-1.8	1.0	2.2	1.5	0.0	0.1
November	-1.8	1.1	2.5	1.5	0.4	0.0
December	-2.1	1.0	3.0	1.4	-0.5	-0.1

Chart 4: Accumulated Inflation, January to December 2019 - 2020

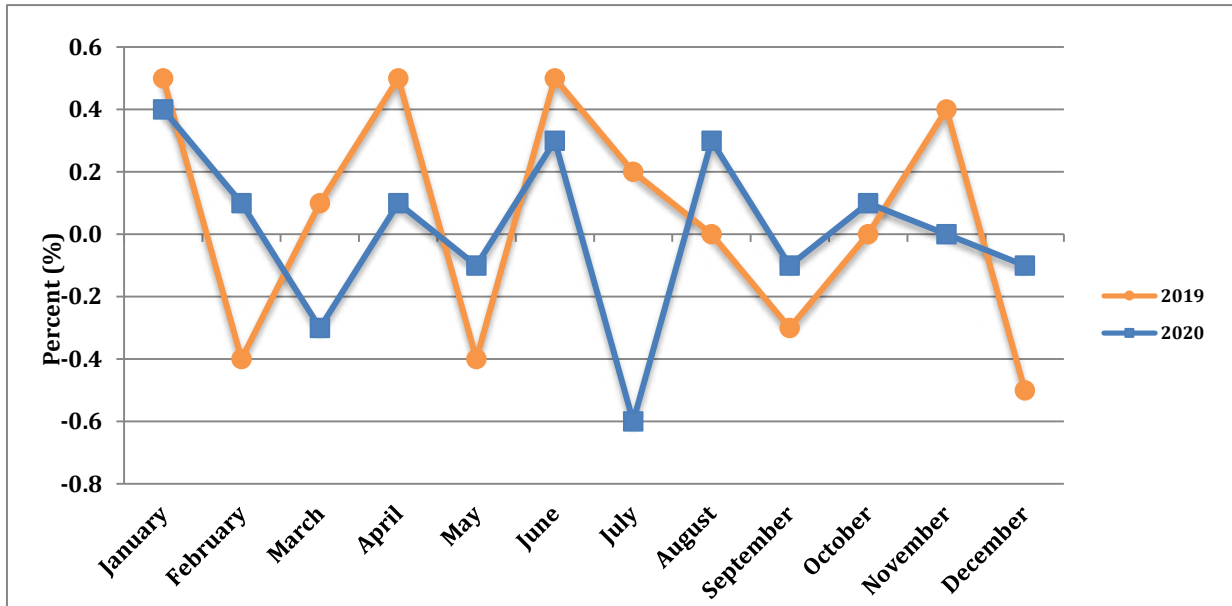
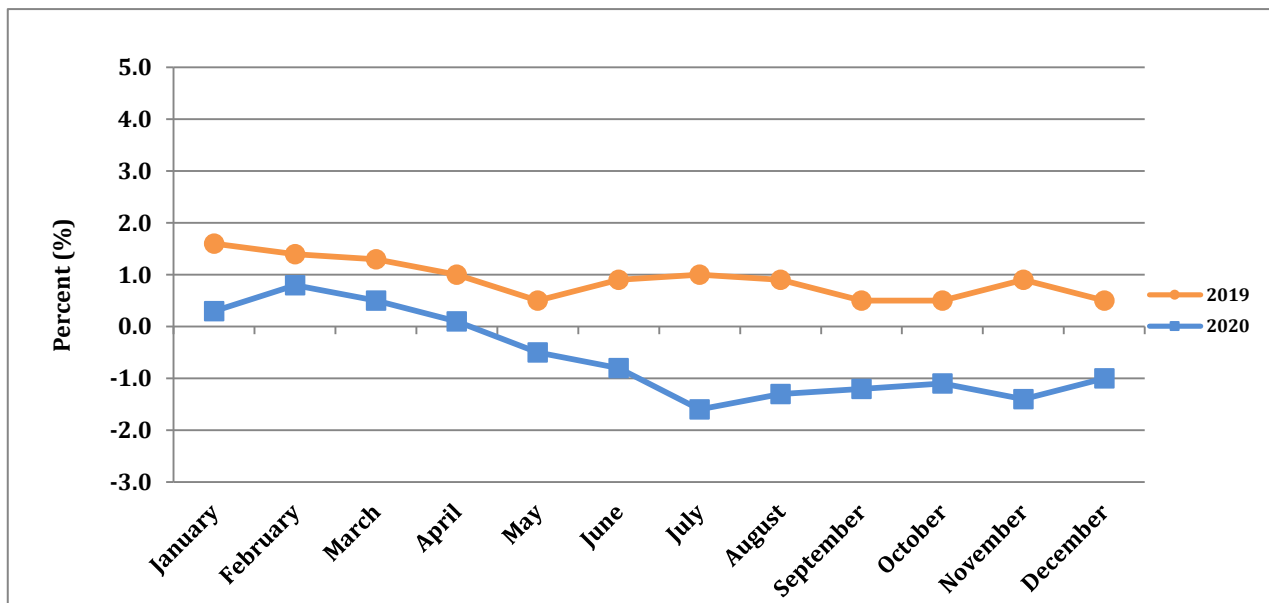


Table 9: Point to Point Rate of Inflation, January to December 2015 - 2020

Months	2015	2016	2017	2018	2019	2020
January	-0.2	-2.6	1.9	2.7	1.6	0.3
February	-1.1	-1.3	1.7	2.8	1.4	0.8
March	-1.8	-0.7	1.4	3.1	1.3	0.5
April	-2.2	-1.0	2.9	2.7	1.0	0.1
May	-1.8	-0.1	2.6	2.3	0.5	-0.5
June	-1.9	0.9	1.8	2.1	0.9	-0.8
July	-1.6	0.0	2.1	2.0	1.0	-1.6
August	-1.9	0.0	2.0	2.2	0.9	-1.3
September	-1.7	0.6	1.9	2.3	0.5	-1.2
October	-2.0	0.7	2.3	2.3	0.5	-1.1
November	-2.6	0.9	2.4	1.9	0.9	-1.4
December	-2.1	1.0	3.0	1.4	0.5	-1.0
Average	-1.7	-0.1	2.2	2.3	0.9	-0.6

Chart 5: Point to Point Rate of Inflation, January to December 2019 - 2020



**Table 10.1: Average Annual Retail Price
Selected Items 2020 Compared With 2019**

Items	Unit Of Quantity	Average Retail Price EC\$		Percentage Change Over Previous Year
		2020	2019	2019
FOOD AND NON-ALCOHOLIC BEVERAGES				
Beef - Fresh	Lb.	8.92	8.00	11.5
Chicken - Whole	Lb.	6.90	6.71	2.8
Chicken - Leg Quarters	Lb.	2.83	2.87	-1.4
Chicken - Backs	Lb.	1.71	1.66	3.0
Chicken - Wings	Lb.	4.80	4.68	2.6
Turkey Wings	Lb.	3.36	3.30	1.8
Fish - Fresh (Deep Sea)	Lb.	9.00	9.00	0.0
Fish - Fresh (Jacks)	Lb.	4.58	4.27	7.3
Fish - Fresh (Robins)	Lb.	4.82	5.00	-3.6
Chicken Franks	340 g Pk	6.29	6.14	2.4
Luncheon Meat (pork)	340 g	8.23	8.27	-0.5
Codfish	Lb.	15.84	15.31	3.5
Cornflakes	12 oz	14.28	13.80	3.5
Pasta - Elbows	340 g	4.68	4.68	0.0
Milk - Evaporated	410g Tin	3.27	3.28	-0.3
Milk - Condensed	397g Tin	3.97	4.00	-0.7
Bread- Small Loaf, white	5 Pk	1.89	1.89	0.0
Bread - Large Sliced Pan Loaf (white)	Each	4.19	4.19	0.0
Eggs	Doz	8.43	9.48	-11.1
Orange Juice	19 oz Tin	9.25	8.98	3.0
Sugar - Brown (loose)	Lb.	1.64	1.63	0.6
Sugar - White (loose)	Lb.	1.79	1.79	0.0
Flour - Loose	Lb.	1.35	1.35	0.0
Flour - Packaged (white)	2 kg	6.84	6.83	0.1
Flour - Packaged (wholewheat)	2 kg	7.18	7.18	0.0
Rice - Loose	Lb.	1.88	1.90	-1.1
Rice - Package	2 kg	10.81	10.58	2.2
Bananas	Lb.	1.43	1.42	0.7
Breadfruit	Lb.	2.45	2.36	3.8
Eddoes	Lb.	3.04	2.76	10.1
Dasheens	Lb.	2.19	1.88	16.5
Sweet Potatoes	Lb.	2.69	2.33	15.5
Oranges	Each	9.25	8.98	3.0
Tomatoes	Lb.	6.20	4.80	29.2
Cooking Margarine	445g Tub	9.54	9.16	4.1
Vegetable Oil	1 Litre	12.42	12.40	0.2
Powdered Chocolate	300g Pk	10.60	10.82	-2.0
Hairoun Fruit Cocktail (not cold)	280 ml Bottle	2.90	2.82	2.8
Vitamalt	310 ml Bottle	5.80	5.76	0.7
Ground Cinnamon	3.37oz bottle	7.07	3.78	87.0
Yeast	500g tin	27.52	17.84	54.3
Sweet peppers	Lb.	8.37	7.21	16.1
Chive	Bundle	2.66	2.29	16.2
Mutton, fresh	Lb.	14.90	12.39	20.3

**Table 10.2: Average Annual Retail Price
Selected Items 2020 Compared With 2019**

Items	Unit Of Quantity	Average Retail Price EC\$		Percentage Change Over Previous Year
		2020	2019	2019
ALCOHOLIC BEVERAGES, TOBACCO & NARCOTICS				
Rum - Local (White)	750 ml Bottle	32.65	31.38	4.0
Beer - Local	280ml Bottle	5.07	5.09	-0.4
Cigarettes	Pkt. (10)	3.66	3.99	-8.3
Table wine (Local)	26 oz Bottle	23.63	21.74	8.7
CLOTHING & FOOTWEAR				
Textile material - Terelyne	Yd.	47.95	47.95	0.0
Textile material - Linen	Yd.	17.95	17.95	0.0
Men's Shirts - Long Sleeve	Each	69.95	69.95	0.0
Men's Jeans (long) - size 30	Each	49.95	49.95	0.0
Men's Shoes -Formal	Pair	79.07	79.80	-0.9
Women's Shoes - Formal	Pair	88.96	89.78	-0.9
Women's 2Pc Skirtsuit (polyester) large	Each	102.48	102.48	0.0
Women's Blouse (cotton/Spandex)	Each	29.95	29.95	0.0
Women's Dress, casual, medium	Each	40.00	41.43	-3.5
Men's boxers	Each	5.74	7.95	-27.8
Textile material, polyester, 60"	1 yard	24.20	24.95	-3.0
HOUSING, WATER, ELECTRICITY, GAS AND OTHER FUELS				
Rent :				
Unfurnished House -2 Bedroom	1Month	567.86	567.86	0.0
Unfurnished House -3 Bedroom	1Month	612.50	612.50	0.0
Furnished Apartment- 2 Bedroom	1Month	791.67	791.67	0.0
Cement - Portland (grey)	94 Lbs	20.66	20.70	-0.2
Galvanise Sheets 10 ft.	1 Length	96.68	96.68	0.0
Oil Paint	1 Gal.	134.43	134.43	0.0
Lumber -Dressed Treated Yellow Pine (1x12x1	1 Length	75.53	69.63	8.5
Water - Consumption Charge	5000 Gals.	37.50	37.50	0.0
Kerosene	1 Gal.	6.61	6.61	0.0
Charcoal	1 Sack	40.00	40.00	0.0
Cooking Gas	20 Lb. Cyl.	34.67	37.81	-8.3
Electricity Consumption Charge	140 KWH	108.00	124.97	-13.6
FURNISHING, HOUSEHOLD EQUIPMENT AND HOUSEHOLD MAINTENANCE				
Bed - Cherry 54"x75"	Each	1168.71	1173.73	-0.4
Double size sheets - coloured/cotton	Each	105.11	105.01	0.1
Frying Pan - 12" - non-stick	Each	55.98	55.94	0.1
Laundry Soap	Each	1.23	1.24	-0.8
Electrical Bulb - 60W	Each	6.35	6.35	0.0
Disinfectant	30oz bottle	4.62	5.03	-8.2
Dishwashing liquid	450ml	7.68	7.90	-2.8
Washing powder	400g	4.89	5.06	-3.4
Pillow case	1 pair	14.47	14.95	-3.2

**Table 10.3: Average Annual Retail Price
Selected Items 2020 Compared With 2019**

Items	Unit Of Quantity	Average Retail Price EC\$		Percentage Change Over Previous Year 2019
		2020	2019	
HEALTH				
Doctor's Fee - Gynaecologist	1 Visit	60.00	60.00	0.0
Eye Care	1 Test	100.00	100.00	0.0
Hospitalisation (Private Ward)	1 Day	75.00	75.00	0.0
Drug for Hypertension	1 Month supply	3.55	3.50	1.4
Drug for Diabetes	1 Month supply	10.51	10.95	-4.0
Cough, Cold Preparation	125 ml.	15.19	15.22	-0.2
Dental Care	1 Visit	142.92	132.78	7.6
Chest X- ray	1 Test	150.00	150.00	0.0
TRANSPORT				
Petrol - Unleaded	1 Gal.	11.01	12.44	-11.5
Vehicle License (car) - not exd. 2000 lbs	1 Year	590.00	590.00	0.0
Bus Fare - Mesopotamia	1-way	3.00	3.00	0.0
Boat Fare - Bequia	1-way	25.00	25.00	0.0
Passenger airfare from S.V.G to:				
New York, U.S.A	1 month	2451.33	3482.70	-29.6
Barbados	1-way	416.99	546.35	-23.7
Trinidad and Tobago	1-way	381.02	476.57	-20.0
COMMUNICATION				
Telephone Service - rental of line- domestic	1 Month	23.66	23.66	0.0
Telephone - Consumption Charge	226 Units	18.08	18.08	0.0
Internet Charge	1 Month	104.00	104.00	0.0
Fixed Line domestic Rate- peak	1 Minute	0.08	0.08	0.0
Mobile to Mobile- domestic	1 Minute	1.00	1.00	0.0
RECREATION AND CULTURE				
Television 26 " Flat panel	Each	2011.96	1998.83	0.7
Cable TV Basic Charge	1 Month	79.33	79.33	0.0
Laptop Computer -13.3 " screen 2 GB	Each	3886.90	3856.20	0.8
Desktop Computer - 14" Monitor 3 GB	Each	2100.99	2084.40	0.8
Car - Remote Control	Each	263.39	253.17	4.0
Dog Food (Canned)	374g Tin	3.89	3.84	1.3
Dance Admission to Night Club	Per Person	20.00	20.00	0.0
Carnival costume and Band Fees (Adult)	Each	375.00	375.00	0.0
Lawn food	5Lb.	70.77	64.66	9.4
Cat food	5.5oz tin	3.12	2.86	9.1
Dog Food (Canned)	625g tin	9.55	7.84	21.8

**Table 10.4: Average Annual Retail Price
Selected Items 2020 Compared With 2019**

ITEMS	Unit Of Quantity	Average Retail Price EC\$		Percentage Change Over Previous Year 2019
		2020	2019	
EDUCATION				
Pre-Primary - Private	1 Month	217.50	217.50	0.0
Primary School Fee - Private	1 Term	850.00	850.00	0.0
Secondary School Fee - Private	1 Term	100.00	100.00	0.0
Newspaper - Local	Each	1.50	1.50	0.0
Exercise Book - Primary - 24 leaves	Each	0.78	0.78	0.0
Lead Pencils	Each	0.79	0.89	-11.2
Mathematics Textbook - Form 4	Each	75.28	75.72	-0.6
Tuition for local evening classes	1 Subject	100.00	100.00	0.0
RESTAURANTS AND HOTELS				
Chicken Lunch - regular	Each	14.49	14.44	0.3
Fish Lunch - regular	Each	17.02	15.50	9.8
Fast Food - 2 Pc Chicken and Fries	Each	17.05	17.05	0.0
Beef roti	Each	11.92	11.17	6.7
School meals:				
Chicken lunch	Each	4.17	3.00	39.0
Bakes and Chicken	Each	5.00	4.18	19.6
Pizza	Each	3.00	2.59	15.8
Univerisity Accommodation	Per semester	2,650.83	2,426.49	9.2
MISCELLANEOUS GOODS AND SERVICES				
Toilet Soap	125g	3.63	3.51	3.4
Toothpaste	130g tube	9.79	9.36	4.6
Men's Haircut	1 Visit	10.00	10.00	0.0
Women's Hairdressing (Relaxer)	1 Visit	69.07	69.82	-1.1
Disposable Diapers (medium)	10 per Pk.	13.90	13.30	4.5
Health Insurance - Group (family)	≥3 Persons	307.00	307.00	0.0
Health insurance - Group (single)	Monthly	184.78	95.08	94.3
Legal Expenses (Affidavit)	Fee	250.00	250.00	0.0